

Bit-Check 12 Diamond 1, 12 pieces

Bit-Checks Diamond



EAN:	4013288180025	Size:	69x20x65 mm
Part number:	05057421001	Weight:	105 g
Article number:	Bit-Check 12 Diamond 1	Country of origin:	CZ
		Customs tariff number:	82079030

- Upright positionable Bit-Checks convince due to their functionality in a minimum of space
- BiTorsion bits for long service life
- Diamond coating for a secure fit in the screw, literally bites into the screwhead to prevent cam-out
- Rapidaptor holder for rapid bit change
- Take it easy tool finder: colour coding according to profile and size

Bits with tiny diamond particles on the bit tip. This ensures a secure fit in the screw head, reduces the contact pressure required and lowers the risk of slipping. BiTorsion bits with an elastic torsion zone – where kinetic energy is diverted from peak loads – and softer BiTorsion zone to prevent the bit tip from twisting under high strain. This greatly extends the product service life. Comes with Rapidaptor technology, which allows bits to be attached without any need to actuate the sleeve. The removal of the bit is simple, just by pushing the sleeve forward – for rapid bit change with just one hand. For insertion in the power screwdriver or into the chuck of the power drill. The multi-component Bit-Check is convincing on account of its low weight and the maximum possible degree of compactness. In this respect, the soft material in the lower section of the Bit-Check ensures that the bits are securely held whilst being simple to remove at the same time. The profile and size of the bits are easy to recognise thanks to the Wera "Take it easy" Tool Finder with its colour coding and clearly visible imprint.

Web link

http://products.wera.de/en/bits_holders_adaptors_bit_sets_bit-checks_diamond_bit-check_12_diamond_1.html

Wera - Bit-Check 12 Diamond 1
05057421001 - 4013288180025

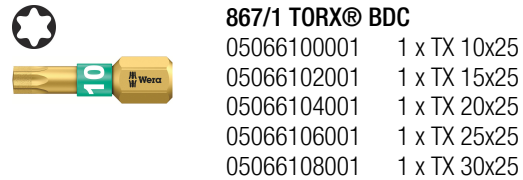
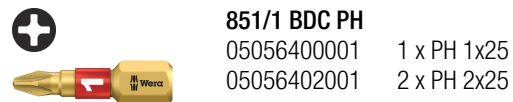
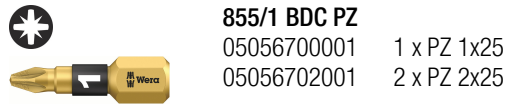
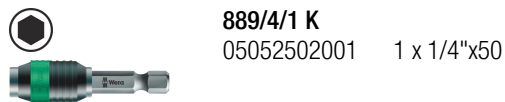
Wera Werkzeuge GmbH
Korzter Straße 21-25
D-42349 Wuppertal
Tel: +49 (0)2 02 / 40 45-0
E-Mail: info@wera.de

Bit-Check 12 Diamond 1, 12 pieces



Bit-Checks Diamond

Set contents:



At the workplace



The Bit-Checks can be positioned upright at the workplace so the tool is always quickly to hand.

Bits with diamond coating



The diamond coating of the DC bits lowers the danger of slipping as the minute diamond particles literally "bite" themselves into the screw head.

Slipping out of the head of the screw



To solve this fundamental problem, Wera launched a diamond-coated bit on to the market in 1992.

Secure fit in the screw head



Today, the Wera diamond bit – manufactured with the technology specifically developed by Wera for this application – still sets the standard in terms of resilience and functionality. Wera bits with a diamond coating ensure a secure fit of the bit in the screw head.

Web link

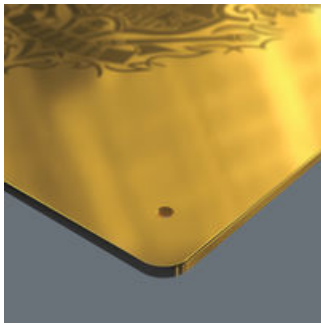
http://products.wera.de/en/bits_holders_adaptors_bit_sets_bit-checks_diamond_bit-check_12_diamond_1.html

Wera - Bit-Check 12 Diamond 1
05057421001 - 4013288180025

Wera Werkzeuge GmbH
Korzter Straße 21-25
D-42349 Wuppertal
Tel: +49 (0)2 02 / 40 45-0
E-Mail: info@wera.de

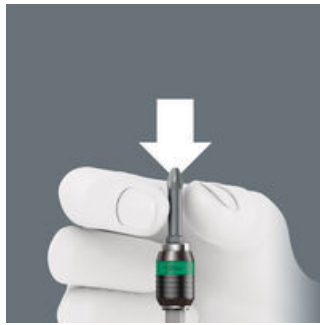
Bit-Checks Diamond

Perfect fit



Ideal for sensitive materials

Rapid-in and self-lock



The bit can be pushed into the adaptor without moving the sleeve. The lock is activated automatically as soon as the bit is applied to the screw. Bits are held securely and wobble-free.

Rapid-out



Simply push the sleeve forward to change the bit. The spring mechanism lifts the bit off the magnet and unlocks the tool. The bit can be easily removed. The rapid-out function makes it easy to remove even the smallest bits without extra tools.

Magnetic



Bit holders, magnetic, for easier application of the screw.

Web link

http://products.wera.de/en/bits_holders_adaptors_bit_sets_bit-checks_diamond_bit-check_12_diamond_1.html

Wera - Bit-Check 12 Diamond 1
05057421001 - 4013288180025

Wera Werkzeuge GmbH
Korzerter Straße 21-25
D-42349 Wuppertal
Tel: +49 (0)2 02 / 40 45-0
E-Mail: info@wera.de