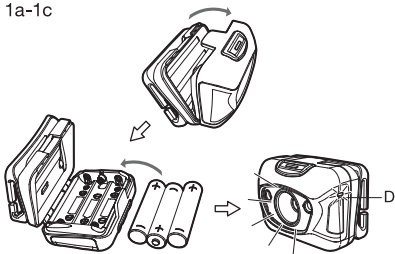


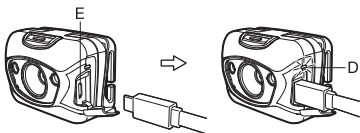
**XPLOR**  
**PHR15 Headlamp**  
**Instruction Manual**



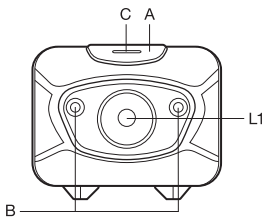
1a-1c



2a-2b



3a-3b



## Getting to know your headlamp

- |   |   |
|---|---|
| (A) Main button                           | (D) Power / charging indicator light<br>(red / green light) |
| (B) Distance sensors (auto dimming)       | (E) Micro USB charging port                                 |
| (C) Sensor indicator light<br>(red light) | (L1) Main light   |

### 1. Fitting batteries and checking battery status

- 1a. Check the headlamp is off before opening battery compartment.
- 1b. Insert new batteries following the polarity markings (+) and (-) on the battery compartment.
- 1c. Power indicator light (D) will indicate battery status after the light is on.
- |                             |           |
|-----------------------------|-----------|
| Green LED (Flashes 3 times) | - Good    |
| Green LED (Flashes 2 times) | - Average |
| Red LED (Constant on)       | - Low     |

### 2. Charging the headlamp

- 2a. Ensure the same type of NiMH batteries are installed properly in the headlamp.
- 2b. Charging indicator light (D) will indicate charging status.
- |                         |  |
|-------------------------|--|
| Green LED (Constant on) | - Charging completed   |
| Green LED (Flashing)    | - Charging in progress   |
| Red LED (Flashing)      | - Charging stopped. Ensure NiMH rechargeable batteries are installed properly. |

### 3. Operation

#### 3a. Main light - Cool white (L1)

Short press (A) to cycle through light modes	Main light on High → Medium → Low → Flashing → Off
When (L1) is on, long press (A) for 2 seconds	Distance sensor activated and (C) is on (L1 flashes once)
When distance sensor mode is activated	Main light on (Light output will be adjusted automatically according to view distance)
When distance sensor mode is activated, short press (A)	Distance sensor deactivated and (C) is off

#### 3b. Other operations

When (L1) is off, long press (A) for >5 seconds	Lock mode activated (L1 flashes twice). In lock mode, (L1) flashes momentarily when (A) is pressed.
When lock mode activated, long press (A) for >5 seconds	Lock mode deactivated (L1 flashes twice)

Note: When the battery is running low, sensor function will be turned off automatically to extend battery life. (L1 flashing 3 times)

### 4. Specifications

Lumen	300 lm – 5 lm	Impact resistance	1.0 m
Candela	Max. 6200 cd	Battery	NiMH / Alkaline (3 x AAA)
Beam distance	Max. 157 m	LED	Cree
Runtime	3 h – 42 h (NiMH) / 5 h – 69 h (Alkaline)	Weight	110g (with batteries)
IP rating	IPX6	Dimensions	46 x 56 x 34 mm