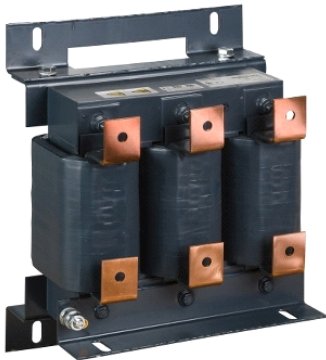


## VW3A4560

line choke - 0.098 mH - 264 A - 3 phases - 245 W -  
for variable speed drive



### Main

Range of product	Altivar
Product or component type	Line choke
Product compatibility	ATV61HC13N4D - line choke - 1 per drive ATV61HC25Y - line choke - 1 per drive ATV61QC13N4 - line choke - 1 per drive ATV61QC25Y - line choke - 1 per drive ATV71HC13N4 - line choke - 1 per drive ATV71HC20Y - line choke - 1 per drive ATV71QC11N4 - line choke - 1 per drive ATV71QC20Y - line choke - 1 per drive
Network number of phases	Three phase
Range compatibility	Altivar 61 Altivar 71 Altivar 61Q Altivar 71Q
Device application	Reduction of current harmonics
Value of inductance	0.098 mH
[In] rated current	264 A
Saturation current	530 A
Thermal losses	245 W
Electrical connection	Bare wires, Ø = 11 mm

### Complementary

Supply frequency	50...60 Hz
Max current	1.65 x nominal current for 60 s
Voltage drop at rated load	5 %
Electrical insulation class	Class F
Clearance distance	5.5 mm conforming to IEC 60664
Leakage distance	11.5 mm conforming to IEC 60664
Product weight	43 kg
Width	320 mm
Height	380 mm
Depth	210 mm

### Environment

standards	EN 50178 IEC 60076 (with HD398) VDE 0160 level 1
IP degree of protection	IP00 (choke) IP00 (terminals)
environmental characteristic	3B1 conforming to IEC 721-3-3 3C2 conforming to IEC 721-3-3 3S1 conforming to IEC 721-3-3
pollution degree	2 conforming to EN 50178
vibration resistance	1.5 mm peak to peak (f = 3...13 Hz) conforming to IEC 60068-2-6 1 gn (f = 13...200 Hz) conforming to IEC 60068-2-6
shock resistance	15 gn for 11 ms conforming to IEC 60068-2-27
relative humidity	0...95 %
ambient air temperature for operation	> 45...< 55 °C with current derating of 2 % per °C 0...45 °C without current derating
ambient air temperature for storage	-25...70 °C
operating altitude	<= 1000 m without current derating

The information provided in this documentation contains general descriptions and/or technical characteristics of the performance of the products contained herein. This documentation is not intended as a substitute for and is not to be used for determining suitability or reliability of these products for specific user applications. It is the duty of any such user or integrator to perform the appropriate and complete risk analysis, evaluation and testing of the products with respect to the relevant specific application or use thereof. Neither Schneider Electric Industries SAS nor any of its affiliates or subsidiaries shall be responsible or liable for misuse of the information contained herein.

1000...3000 m with current derating 1 % per 100 m

---

---

**Contractual warranty**

---

Warranty period	18 months
-----------------	-----------

---