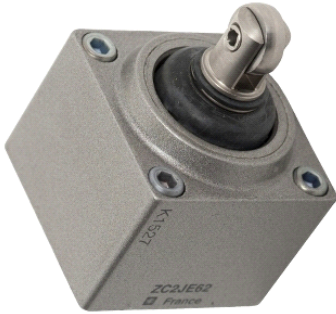


## ZC2JE625

limit switch head ZC2J - steel roller plunger - +120 °  
C



### Main

Range of product	OsiSense XC
Series name	Special format
Product or component type	Limit switch head
Device short name	ZC2J
Head type	Plunger head
Product compatibility	XC2J
Associated body	ZC2JC15 ZC2JC25
Movement of operating head	Linear
Type of operator	Roller plunger spring return metal
Type of approach	Lateral approach 2 directions

### Complementary

Switch actuation	By 30° cam
Positive opening	Without
Product weight	0.2 kg
Head material	Metal

### Environment

ambient air temperature for operation	10...120 °C
ambient air temperature for storage	10...120 °C
environmental characteristic	High temperature

### Offer Sustainability

Sustainable offer status	Green Premium product
RoHS (date code: YYWW)	Compliant - since 1618 - Schneider Electric declaration of conformity
REACH	Reference not containing SVHC above the threshold
Product end of life instructions	Need no specific recycling operations

### Contractual warranty

Warranty period	18 months
-----------------	-----------

The information provided in this documentation contains general descriptions and/or technical characteristics of the products contained herein. This documentation is not intended as a substitute for and is not to be used for determining suitability or reliability of these products for specific user applications. It is the duty of any such user or integrator to perform the appropriate and complete risk analysis, evaluation and testing of the products with respect to the relevant specific application or use thereof. Neither Schneider Electric Industries SAS nor any of its affiliates or subsidiaries shall be responsible or liable for misuse of the information contained herein.