



# CROSS

## THE COMPREHENSIVE CROSSOVER SYSTEM

CROSS 5 is more than just a crossover. Forged from high quality thermoplastic polyurethane (TPU), CROSS 5 is a five channel crossover system that gives you unrivalled strength, abrasion resistance and flexibility, with NEW fire retardant technology. Its ingenious design enables a wide variety of crossover combinations, whatever your cable management needs. The two elements that enable this system are the base section and the ramp section.

### BASE SECTION

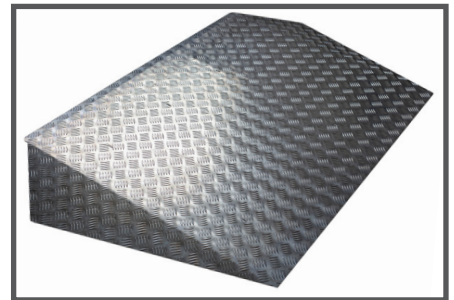
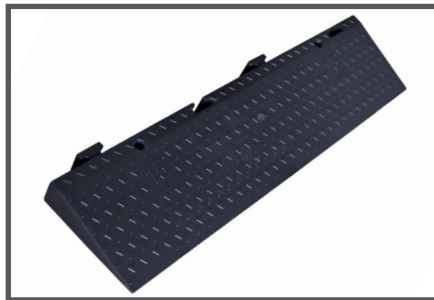
The base sections acts as a connector piece, from which many combinations of cross over systems can be created.

### RAMP SECTION

The ramp section has a 15° angle of inclination, the optimal angle for vehicles to drive over.

### WHEELCHAIR SECTION

The wheelchair ramp section is an aluminium section that is wheelchair compatible, with an incline of 3.4°.



### KEY FEATURES:

- Highly tear-proof and high form stability.
- Indented channel ridges to prevent the lid bowing under pressure.
- Resistant to most oils, fats and chemicals.
- Fire retardant (DIN EN 13501-1).
- Can withstand 5 tonnes of direct pressure.
- Coloured lids can be changed.
- Fixed lid in drive over position.
- Quick and easy assembly.
- MAX PERFORMANCE: anti-sliding pads available for hexagonal base.



**FIRE RETARDANT**

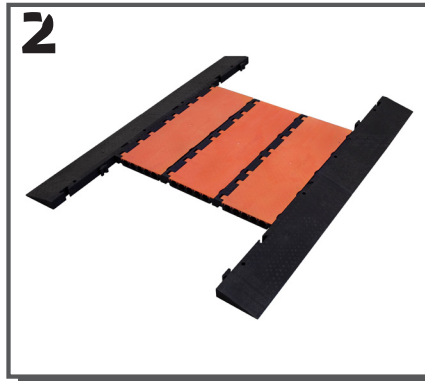
# CROSS 5

## COMBINATIONS

With Cross 5, you have endless crossover structure possibilities, whether you need 5, 10, 15, 100 or more cable channels!



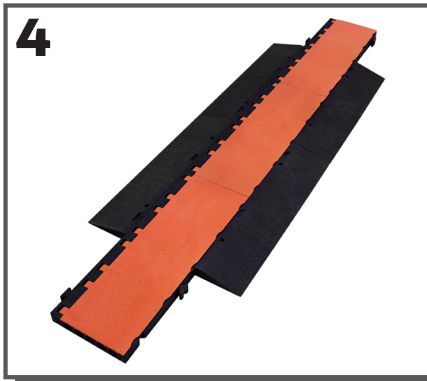
1 base section with 2 ramp sections attached either side (5 channels).



3 base sections connected width ways, with 2 ramp sections attached either side (15 channels).



1 line of base sections with ramp sections attached to one side (5 channels).



1 line of base sections with ramp sections attached either side (5 channels).



2 lines of base sections with ramp sections attached either side (10 channels).



The Cross 5 can be cut into two using a compass saw. This allows you to create even more crossover structures.



The connectors on the Cross 5 are on the side, not the end, so that they are connected all the way along its length. This creates an extremely stable and robust crossover structure.



### DIMENSIONS:

#### Base Section

- Length: 100cm / 43.3"
- Width: 37cm / 14.6"
- Width of x2 base pieces side by side: 80 cm / 31.5"
- Height: 5.8cm / 2.3"
- Weight: 12kg / 26.5lbs
- Cable channels: width 4cm / 1.5", height 4.4cm / 1.7"

#### Ramp Section

- Length: 100cm / 43.3"
- Width: 23cm / 9"
- Height: 5cm / 2"
- Weight: 5kg / 11lbs
- Incline angle: 15°

#### Wheelchair Section

- Length: 100cm / 43.3"
- Width: 120cm / 47.2"
- Height: 6.2cm / 2.44"
- Incline angle: 3.4° / 6%

*The pieces are also available in half sizes!*

### WEIGHT LIMITS:

Cross 5 can sustain the weight of **any licensed road vehicles** (cars, tractors, trucks etc) and can withstand 5 tonnes of direct pressure.

### PRODUCTS CODES:

CODE	DESCRIPTION
CROSS5-RAMP	Cross 5 Ramp (15° angle)
CROSS5K	Cross 5 Base - black lid
CROSS5O	Cross 5 Base - orange lid
CORSS5WCR	Cross 5 Wheelchair Ramp
CROSS5K-500	Cross 5 Half Base - black lid
CROSS5O-500	Cross 5 Half Base - orange lid