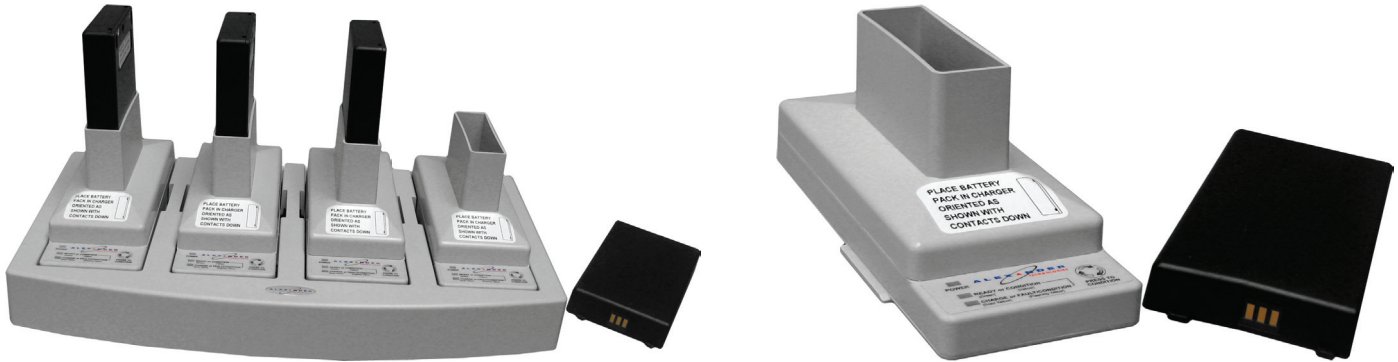


BC-800NM4 and BC-800NM Battery Chargers



The BC-800NM4 4-bay and BC-800NM single-bay battery chargers provide users with a full-featured charger and conditioning unit. Both chargers are specifically designed to charge the BP-800NM rechargeable battery pack utilized by the TR-700, TR-800, TR-825, TR-1, RKP-4 and the new TR-80N and TR-82N Narrow Band beltpacks. Both BC-800NM4 and BC-800NM battery chargers offer a conditioning cycle, status indicators and rapid charge capability. The BC-800NM4 and BC-800NM also offers "Intelligent Charging" optimizing the battery charge cycle and maintains the battery pack at peak capacity for extended periods of time.

Features

Conditioning Cycle

Provides built-in maintenance capability to maximize battery cycle life.

Status Indicators

Charging, Ready, Rejected (dead battery), Conditioning Cycle and Power LED indicators make the BC800NM simple and easy to use.

Intelligent Charging

- Optimizes the battery.
- Battery can remain in the charger indefinitely.
- Maintains battery at peak capacity.

Rapid Charge Capability

Charges in less than two (2) hours.

Specifications

Overall

ESD:8KV continuous contact discharge
 15KV from air to all surfaces without contact

Humidity:95% relative humidity, non-condensing

Drop:..... Unit functions normally after 4ft/1.2m drop to concrete

Storage Temperature:..... -40°F to 122°F (-40°C to 50°C)

Operating Temperature:..... 32°F to 122°F (0°C to 50°C)

Power Supply

BC-800NM4 (Universal): 90V–230VAC, 50/60Hz

Output: 15VDC, 5A or 24VDC, 4.5A

BC-800NM (Universal): 90V–230VAC, 50/60Hz

Output: 15VDC, 1.5A or 24VDC, 1.3A

Safety Standards:

Charger and power supply UL listed (UL 1950), CSA Certified (C 22.2 No. 223); Compliant to FCC part 15 Class A and CE Marking (Electromagnetic Compatibility) Directive 2004/108/EC and Low Voltage Directive 2006/95/EC; C15PR-22 Class B

Performance Characteristics

Rapid Charging:..... Charges batteries to 90+% capacity in 2 hours or less

Complete Charge: Completes 100% capacity charge in 4 hours or less

Conditioning:..... When activated by the user, completely discharges a battery and automatically switches to charging mode

Maintenance Charge: Maintains the battery at optimum capacity indefinitely

User Interface

Power LED:Indicates POWER to charging slot

Conditioning/Charging LED: Flashing indicates discharging process

Reject LED:Flashing indicates faulty battery

Conditioning/Charging LED: Solid indicates battery pack is being charged

Ready LED: Solid indicates battery charged

Product Dimensions/Weight

BC-800NM4:..... 13" W x 4" H x 7" D
 (33cm x 10cm x 17.8cm)
 3lb 8oz (1.59kg)

BC-800NM:..... 2.5" W x 3.5" H x 6" D
 (6.35cm x 8.89cm x 15.24cm),
 4.8oz (.14kg)

Shipping Dimensions/Weight

BC-800NM4:.....11.5" W x 10.5" H x 18.5" D
 (29.2cm x 26.7cm x 47cm),
 10 lb 9oz (4.8kg) with battery adapters,
 power supply, and four (4) BP-800NM
 rechargeable battery packs

BC-800NM:..... 7" W x 4.5" H x 7" D
 (17.68cm x 11.43cm x 17.8cm),
 2lb 10oz (1.2kg) with BP-800NM
 rechargeable battery pack
 and power supply

Material:ABS KJW fire retardant plastic, textured

Order Information

- BC-800NM • Single-Bay Charger for TR-1/700/800/825/RKP-4/80N/82N with USA power cord and a BP-800NM
- BC-800NME • Single-Bay Charger for TR-1/700/800/825/RKP-4/80N/82N with Euro power cord and a BP-800NM
- BC-800NM4 • Four-Bay Charger for TR-1/700/800/825/RKP-4/80N/82N with USA power cord and four (4) BP-800NM
- BC-800NM4E • Four-Bay Charger for TR-1/700/800/825/RKP-4/80N/82N with Euro power cord and four (4) BP-800NM
- C800NM • Single-Bay Charger without Power Supply
- CB800NM4 • Docking Station, Four-Bay Charger
- PS800NM4 • Power Supply for Four-Bay Charger
- PS-800NM • Power Supply for Single-Bay Charger
- PC-UK • BC-800NM and BC-800NM4 UK Power Cord.

For ordering information, contact your regional sales representative at:
<http://rtsintercoms.com/us/intercom/contact>

The specification information is preliminary and is subject to change without notification.
 Brand names mentioned are the property of their respective companies.