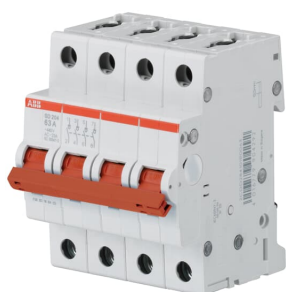


PRODUCT-DETAILS

SD204/63

SD204/63 Switch Disconnecter 4P, 63A



General Information

| | |
|-----------------------|--------------------------------------|
| Extended Product Type | SD204/63 |
| Product ID | 2CDD284101R0063 |
| EAN | 4016779904292 |
| Catalog Description | SD204/63 Switch Disconnecter 4P, 63A |
| Long Description | SD204/63 Switch Disconnecter 4P, 63A |

Ordering

| | |
|------------------------|---------------|
| EAN | 4016779904292 |
| Minimum Order Quantity | 1 piece |
| Customs Tariff Number | 85369095 |

Dimensions

| | |
|----------------------------|---------|
| Product Net Width | 70 mm |
| Product Net Height | 88 mm |
| Product Net Depth / Length | 69 mm |
| Product Net Weight | 0.34 kg |

Container Information

| | |
|--------------------------------|---------------|
| Package Level 1 Units | 1 piece |
| Package Level 1 Width | 92 mm |
| Package Level 1 Height | 80 mm |
| Package Level 1 Depth / Length | 78 mm |
| Package Level 1 Gross Weight | 0.36 kg |
| Package Level 1 EAN | 4016779904773 |
| Package Level 2 Units | 24 piece |
| Package Level 2 Width | 275 mm |
| Package Level 2 Height | 210 mm |
| Package Level 2 Depth / Length | 395 mm |
| Package Level 2 Gross Weight | 9.04 kg |
| Package Level 2 EAN | 4016779905251 |

Environmental

| | |
|--|--|
| Ambient Air Temperature | Operation -25 ... +55 °C Storage -40 ... +70 °C |
| Resistance to Vibrations acc. to IEC 60068-2-6 | 5g, 20 cycles at 5 ... 150 ... 5 Hz with load 0.8 In |
| Resistance to Shock acc. to IEC 60068-2-27 | 25g / 2 shocks / 13 ms |
| RoHS Status | Following EU Directive 2011/65/EU |

Additional Information

| | |
|---|---|
| Actuator Type | Toggle |
| Connecting Capacity | Busbar 10 / 10 mm ² Flexible 0.75 ... 16 mm ² Rigid 0.75 ... 25 mm ² Stranded 0.75 ... 25 mm ² |
| Degree of Protection | IP20 |
| Housing Material | Insulation Group I, RAL 7035 |
| Mounting Position | Any |
| Number of Poles | 4 |
| Operational Voltage | Maximum 462 V AC Minimum 12 V AC |
| Overvoltage Category | III |
| Pollution Degree | 3 |
| Product Main Type | SD200 |
| Product Name | Switch Disconnectors |
| Rated Current (I _n) | 63 A |
| Rated Frequency (f) | 50 Hz 60 Hz |
| Rated Impulse Withstand Voltage (U _{imp}) | 4 kV (6.2 kV @ sea level) (5.0 kV @ 2000 m) |
| Rated Operational Voltage | 440 V AC |
| Recommended Screw Driver | Pozidriv 2 |
| Remarks | IP40 in enclosure with cover |
| RoHS Date | 20170302 |
| Standards | IEC/EN 60947-3 |
| Terminal Type | Screw Terminals |
| Tightening Torque | 2.8 N·m |

Certificates and Declarations (Document Number)

| | |
|-----------------------------------|-----------------|
| Data Sheet, Technical Information | 2CDC441015D0201 |
| Declaration of Conformity - CE | 2CDK440034D2703 |
| Environmental Information | 2CDK400618D0201 |
| Instructions and Manuals | 2CDC441015D0201 |
| RoHS Information | 2CDK440036D0202 |

Classifications

| | |
|----------------------------|--|
| ETIM 4 | EC001545 - Main switch for distribution board |
| ETIM 5 | EC001545 - Main switch for distribution board |
| ETIM 6 | EC001545 - Main switch for distribution board |
| ETIM 7 | EC001545 - Main switch for distribution board |
| Object Classification Code | Q |
| WEEE Category | 5. Small Equipment (No External Dimension More Than 50 cm) |
| eClass | 7.0 27142301 |

Accessories

| Identifier | Description | Type | Quantity | Unit Of Measure |
|-----------------|--|---------------|----------|-----------------|
| 2CCA880100R0001 | CMS-100PS Sensor | CMS-100PS | 1 | piece |
| 2CCA880101R0001 | CMS-101PS Sensor | CMS-101PS | 1 | piece |
| 2CCA880102R0001 | CMS-102PS Sensor | CMS-102PS | 1 | piece |
| 2CDS200909R0001 | S2C-A1 - Shunt Trip | S2C-A1 | 1 | piece |
| 2CDS200909R0002 | S2C-A2 - Shunt Trip | S2C-A2 | 1 | piece |
| 2CDS200912R0001 | S2C-H6R - Auxiliary Contact | S2C-H6R | 1 | piece |
| 2CDS200918R0001 | S2C-NT - Hand Operated Neutral | S2C-NT | 1 | piece |
| 2CDS200922R0001 | S2C-S/H6R - Signal / Auxiliary Contact | S2C-S/H6R | 1 | piece |
| 2CDS200936R0001 | S2C-H11L - Auxiliary Contact | S2C-H11L | 1 | piece |
| 2CDS200936R0002 | S2C-H20L - Auxiliary Contact | S2C-H20L | 1 | piece |
| 2CDS200936R0003 | S2C-H02L - Auxiliary Contact | S2C-H02L | 1 | piece |
| 2CDS200946R0001 | S2C-H6-11R - Auxiliary Contact | S2C-H6-11R | 1 | piece |
| 2CDS200946R0002 | S2C-H6-20R - Auxiliary Contact | S2C-H6-20R | 1 | piece |
| 2CDS200946R0003 | S2C-H6-02R - Auxiliary Contact | S2C-H6-02R | 1 | piece |
| 2CDS200970R0001 | S2C-H01 - Auxiliary Contact | S2C-H01 | 1 | piece |
| 2CDS200970R0002 | S2C-H10 - Auxiliary Contact | S2C-H10 | 1 | piece |
| 2CSS200911R0001 | S2C-UA 12 DC - Undervoltage release | S2C-UA 12 DC | 1 | piece |
| 2CSS200911R0002 | S2C-UA 24 AC - Undervoltage release | S2C-UA 24 AC | 1 | piece |
| 2CSS200911R0003 | S2C-UA 48 AC - Undervoltage release | S2C-UA 48 AC | 1 | piece |
| 2CSS200911R0004 | S2C-UA 110 AC - Undervoltage release | S2C-UA 110 AC | 1 | piece |
| 2CSS200911R0005 | S2C-UA 230 AC - Undervoltage release | S2C-UA 230 AC | 1 | piece |
| 2CSS200911R0006 | S2C-UA 400 AC - Undervoltage release | S2C-UA 400 AC | 1 | piece |
| 2CSS200911R0007 | S2C-UA 24 DC - Undervoltage release | S2C-UA 24 DC | 1 | piece |
| 2CSS200911R0008 | S2C-UA 48 DC - Undervoltage release | S2C-UA 48 DC | 1 | piece |
| 2CSS200911R0009 | S2C-UA 110 DC - Undervoltage release | S2C-UA 110 DC | 1 | piece |
| 2CSS200911R0010 | S2C-UA 230 DC - Undervoltage release | S2C-UA 230 DC | 1 | piece |
| 2CSS200998R0001 | S2C-BP - Mechanical tripping device | S2C-BP | 1 | piece |
| 2CSS200999R0001 | S2C-EST - Plug-in base | S2C-EST | 1 | piece |
| 2CSS201997R0013 | S2C-CM1 - Motor operating device | S2C-CM1 | 1 | piece |
| 2CSS203997R0013 | S2C-CM2/3 - Motor operating device | S2C-CM2/3 | 1 | piece |
| 2CSS204997R0013 | S2C-CM4 - Motor operating device | S2C-CM4 | 1 | piece |
| GHS2001901R0003 | S2C-DH - Mechanical Accessories | S2C-DH | 1 | piece |

Categories

Low Voltage Products and Systems → Modular DIN Rail Products → Command and Signalling devices → Switch Disconnectors

