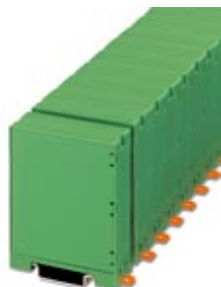


Electronic housing - EMUG 22- BE - 2943479


Please be informed that the data shown in this PDF Document is generated from our Online Catalog. Please find the complete data in the user's documentation. Our General Terms of Use for Downloads are valid (<http://phoenixcontact.com/download>)



Base element with snap-on foot, for mounting on standard DIN rail, 22.5 mm wide



Key Commercial Data

Packing unit	10 pc
Minimum order quantity	10 pc
GTIN	 4 017918 081119
GTIN	4017918081119
Weight per Piece (excluding packing)	18.220 g
Custom tariff number	85472000
Country of origin	Germany

Technical data

General

Housing type	Component housing
Housing material	Polycarbonate fiber reinforced
Color (RAL)	green

Ambient conditions

Ambient temperature (operation)	-40 °C ... 125 °C
---------------------------------	-------------------

Dimensions

Length	60 mm
Width	22.5 mm
Depth	60 mm

Technical data

Number of positions	999
---------------------	-----

Standards and Regulations

Electronic housing - EMUG 22- BE - 2943479

Technical data

Standards and Regulations

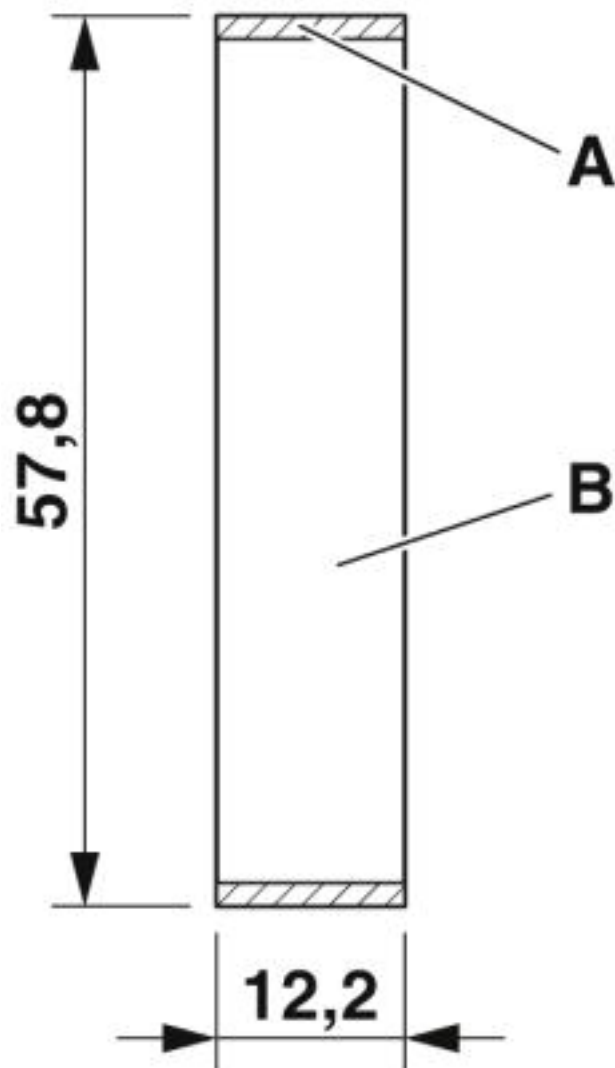
Flammability rating according to UL 94	V0
--	----

Environmental Product Compliance

China RoHS	Environmentally friendly use period: unlimited = EFUP-e
	No hazardous substances above threshold values

Drawings

Dimensional drawing



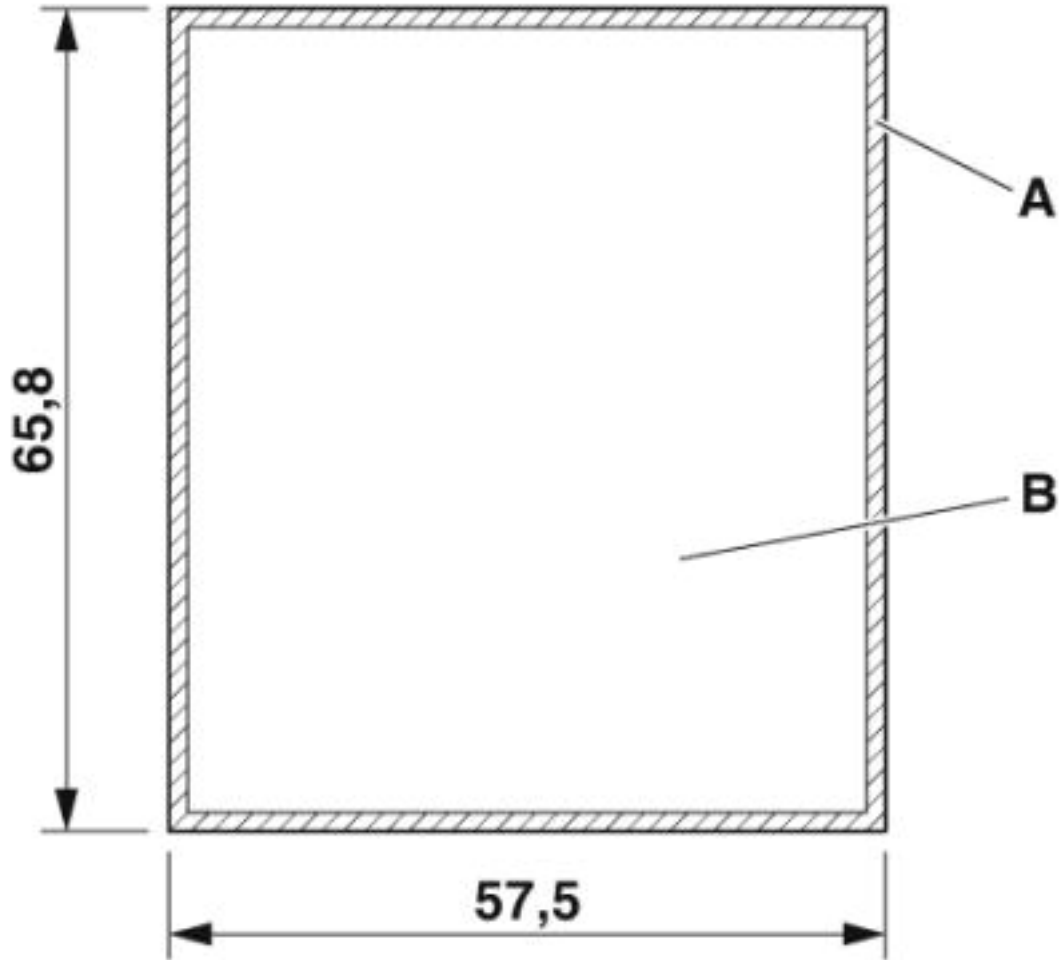
PCB 1 and 2 for EMUG 22 (horizontal)

A = PCB edge = 1.5 mm

B = Overall component area

Electronic housing - EMUG 22- BE - 2943479

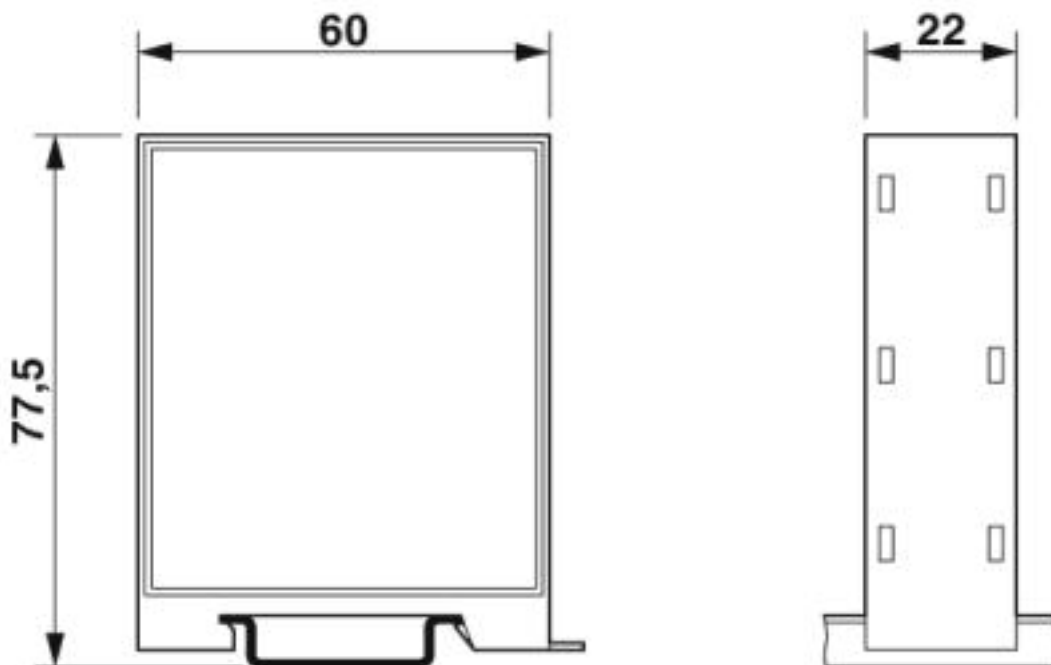
Dimensional drawing



PCB 3 and 4 for EMUG 25 and EMUG 45 parallel to housing panel - side panel
A = PCB edge = 1.5 mm
B = Overall component area

Electronic housing - EMUG 22- BE - 2943479

Dimensional drawing



Classifications

eCl@ss

eCl@ss 4.0	27180400
eCl@ss 4.1	27180400
eCl@ss 5.0	27180500
eCl@ss 5.1	27180500
eCl@ss 6.0	27180800
eCl@ss 7.0	27182702
eCl@ss 8.0	27182702
eCl@ss 9.0	27182702

ETIM

ETIM 2.0	EC001031
ETIM 3.0	EC001031
ETIM 4.0	EC001031
ETIM 5.0	EC001031
ETIM 6.0	EC001031
ETIM 7.0	EC001031

UNSPSC

UNSPSC 6.01	31261501
UNSPSC 7.0901	31261501
UNSPSC 11	31261501

Electronic housing - EMUG 22- BE - 2943479

Classifications

UNSPSC

UNSPSC 12.01	31261501
UNSPSC 13.2	31261501
UNSPSC 18.0	31261501
UNSPSC 19.0	31261501
UNSPSC 20.0	31261501
UNSPSC 21.0	31261501

Accessories

Accessories

Device marking

Marking material - EMG-GKS 22 - 2941594



Device marking label, width: 22 mm, area: 22 x 8 mm, e.g. for EML(20x8) R adhesive marking material

Terminal marking

Marker card - SK U/3,8 WH:UNBEDRUCKT - 0803906



Marker card, Sheet, white, unlabeled, can be labeled with: PLOTMARK, CMS-P1-PLOTTER, Office printing systems, mounting type: adhesive, for terminal block width: 210 mm, lettering field size: 186 x 3.8 mm, Number of individual labels: 1440

Marking material - EMG-GKS 12 - 2947035



Device marking label, width: 12 mm, area: 12 x 8 mm, e.g. for EML(10x7) R adhesive marking material

Marking material - EMG-SGKS 10 - 2947585



Equipment marker, narrow

Electronic housing - EMUG 22- BE - 2943479

Accessories

Necessary add-on products

Electronic housing - EMUG- SE 5,0MM - 2943505

Side element, two pieces necessary, for closing the base element on both sides, without PCB, 5 mm thick.

Electronic housing - EMUG- SE 3,5MM - 2943495

Side element, two pieces necessary, for closing the base element on both sides, without PCB, 3.5 mm thick.
