

Filter terminal block - PSR-FTB/1.5/11.5 - 2904476

Please be informed that the data shown in this PDF Document is generated from our Online Catalog. Please find the complete data in the user's documentation. Our General Terms of Use for Downloads are valid (<http://phoenixcontact.com/download>)



Terminal block for filtering test pulses from safe semiconductor outputs with adjustable filter values (1.5 μ F/11.5 μ F), as well as for EMC filtering of 24 V signals up to an amperage of 2 A.



Key Commercial Data

| | |
|--------------------------------------|---------------|
| Packing unit | 1 pc |
| GTIN | |
| GTIN | 4046356831505 |
| Weight per Piece (excluding packing) | 28.600 g |
| Custom tariff number | 85369010 |
| Country of origin | Germany |

Technical data

Dimensions

| | |
|--------|--------|
| Width | 6.2 mm |
| Height | 94 mm |
| Depth | 80 mm |

Ambient conditions

| | |
|---|------------------|
| Ambient temperature (operation) | -25 °C ... 55 °C |
| Ambient temperature (storage/transport) | -25 °C ... 70 °C |

Input data

| | |
|--------------------------------|--|
| Nominal input voltage U_N | 24 V DC \pm 20 % (Control voltage U_{ST} right/left) |
| Typical input current at U_N | max. 15 mA |
| Protective circuit | Surge protection |

Output data

| | |
|------------------------------|---|
| Nominal output voltage | 24 V DC \pm 20 % (Control voltage U_{ST} right/left) |
| Nominal output voltage range | 19.2 V DC ... 28.8 V DC (Control voltage U_{ST} right/left) |

Filter terminal block - PSR-FTB/1.5/11.5 - 2904476

Technical data

Output data

| | |
|-----------------------------|-------------------------------------|
| Limiting continuous current | max. 2 A (in total for OUT1 + OUT2) |
|-----------------------------|-------------------------------------|

Connection data, control circuit

| | |
|----------------------------------|--|
| Connection name | Control circuits |
| Connection method | Push-in connection |
| Stripping length | 8 mm |
| Conductor cross section solid | 0.14 mm ² ... 2.5 mm ² |
| Conductor cross section flexible | 0.14 mm ² ... 2.5 mm ² |
| Conductor cross section AWG | 26 ... 14 |

Connection data load circuit

| | |
|----------------------------------|--|
| Connection name | Load circuit |
| Connection method | Push-in connection |
| Stripping length | 8 mm |
| Conductor cross section solid | 0.14 mm ² ... 2.5 mm ² |
| Conductor cross section flexible | 0.14 mm ² ... 2.5 mm ² |
| Conductor cross section AWG | 26 ... 14 |

General

| | |
|-----------------------|--------------------------------|
| Mounting position | Vertical (horizontal DIN rail) |
| Assembly instructions | In rows with zero spacing |
| Operating mode | 100% operating factor |

Standards and Regulations

| | |
|--------------------------|--|
| Designation | Air clearances and creepage distances between the power circuits |
| Standards/regulations | EN 61131 |
| Rated insulation voltage | 50 V |
| Rated surge voltage | 1.5 kV |
| Insulation | Basic insulation |
| Pollution degree | 2 |
| Overvoltage category | II |

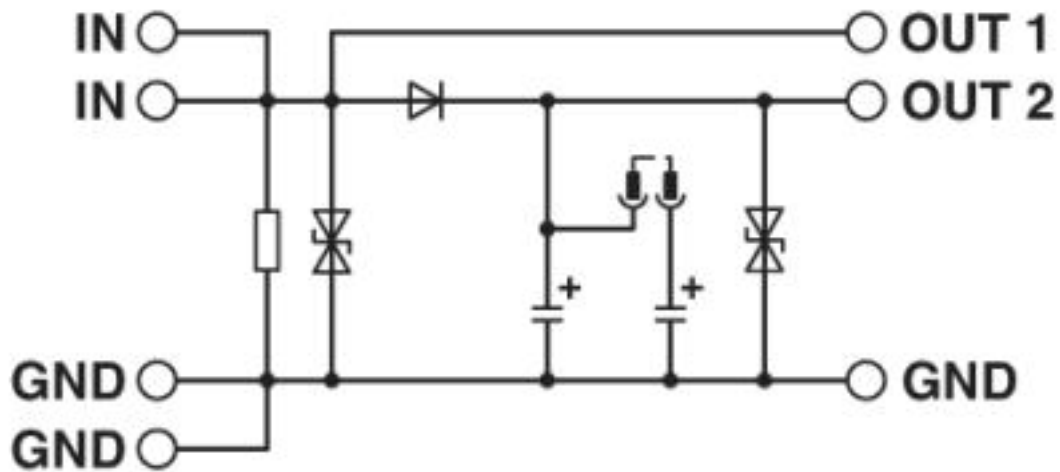
Environmental Product Compliance

| | |
|------------|---|
| REACH SVHC | Lead 7439-92-1 |
| China RoHS | Environmentally Friendly Use Period = 50 |
| | For details about hazardous substances go to tab "Downloads", Category "Manufacturer's declaration" |

Drawings

Filter terminal block - PSR-FTB/1.5/11.5 - 2904476

Circuit diagram



Classifications

eCl@ss

| | |
|------------|----------|
| eCl@ss 4.0 | 40020600 |
| eCl@ss 4.1 | 40020600 |
| eCl@ss 5.0 | 27371900 |
| eCl@ss 5.1 | 27371900 |
| eCl@ss 6.0 | 27249200 |
| eCl@ss 7.0 | 27249290 |
| eCl@ss 8.0 | 27249290 |
| eCl@ss 9.0 | 27240692 |

ETIM

| | |
|----------|----------|
| ETIM 3.0 | EC001449 |
| ETIM 4.0 | EC002564 |
| ETIM 5.0 | EC002564 |
| ETIM 6.0 | EC002584 |
| ETIM 7.0 | EC002584 |

UNSPSC

| | |
|---------------|----------|
| UNSPSC 6.01 | 30211901 |
| UNSPSC 7.0901 | 39121501 |
| UNSPSC 11 | 39121501 |
| UNSPSC 12.01 | 39121501 |
| UNSPSC 13.2 | 39121552 |
| UNSPSC 18.0 | 39121552 |
| UNSPSC 19.0 | 39121552 |
| UNSPSC 20.0 | 39121552 |
| UNSPSC 21.0 | 39121552 |

Filter terminal block - PSR-FTB/1.5/11.5 - 2904476

Approvals


Approvals

Approvals

EAC

Ex Approvals

Approval details

| | | |
|-----|---|--------------------------|
| EAC |  | RU C- DE.A*30.B.01082 |
|-----|---|--------------------------|
