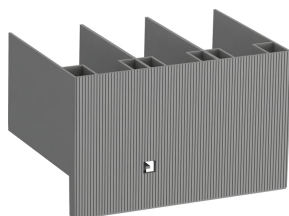


PRODUCT-DETAILS

LT300-AL

LT300-AL Terminal Shroud



General Information

Extended Product Type	LT300-AL
Product ID	1SFN125103R1000
EAN	7320500203934
Catalog Description	LT300-AL Terminal Shroud
Long Description	Protection for main terminals achieving finger protection from life parts. For Contactors A210...A300 in combination with lugs

Ordering

E-Number (Norway)	4120303
E-Number (Sweden)	3228929
EAN	7320500203934
Minimum Order Quantity	1 piece
Customs Tariff Number	85389099

Dimensions

Product Net Width	140 mm
Product Net Height	100 mm
Product Net Depth /	86.2 mm

Length

Product Net Weight	0.28 kg
--------------------	---------

Container Information

Package Level 1 Units	bag 1 piece
Package Level 1 Width	140 mm
Package Level 1 Height	86.2 mm
Package Level 1 Depth / Length	100 mm
Package Level 1 Gross Weight	0.32 kg
Package Level 1 EAN	7320500203934

Environmental

RoHS Status	Following EU Directive 2011/65/EU
-------------	-----------------------------------

Additional Information

Product Main Type	LT300
Product Name	Terminal Shroud
RoHS Date	1713
Suitable For	AF300
Suitable for Product Class	CONTACTORS
Terminal Type	Screw Terminals

Certificates and Declarations (Document Number)

Data Sheet, Technical Information	1SBC100122C0202
Declaration of Conformity - CE	2CMT005321
Environmental Information	1SFC101010D0201
Instructions and Manuals	N/A
RoHS Information	2CMT005321

Classifications

ETIM 4	EC002498 - Accessories for low-voltage switch technology
ETIM 5	EC002498 - Accessories for low-voltage switch technology
ETIM 6	EC002498 - Accessories for low-voltage switch technology
ETIM 7	EC002498 - Accessories for low-voltage switch technology
Object Classification Code	X
UNSPSC	43171815
WEEE Category	Product Not in WEEE Scope

Categories

Low Voltage Products and Systems → Control Products → Contactors → Block Contactors Accessories

