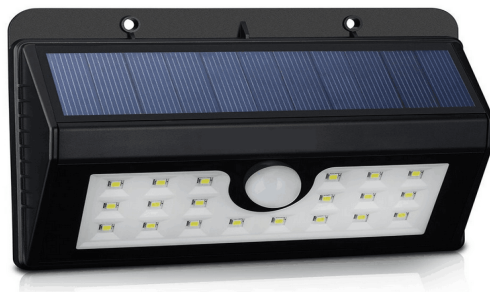


# PRO-ELEC



## Solar Wall Light Model: PEL01354

Please read these instructions carefully before use and retain for future reference.

### IMPORTANT SAFETY INFORMATION

- Avoid locations of high temperature or humidity.
- The lamp is rated at IP65 for external use.

### WHAT'S INCLUDED

- Lamp assembly.
- User manual.
- Pack of screws and wall plugs.

### POSITIONING

- The lamp is suitable for mounting on plasterboard, wood or masonry surfaces.
- It should be mounted in a position of maximum sunlight for optimum charge of the internal battery.
- Before drilling any fixing holes, check that there are no hidden obstructions behind the mounting surface such as pipes or cables.

### INSTALLATION

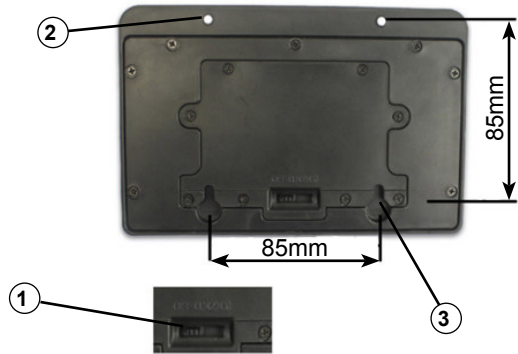
- Offer the lamp to the surface and mark the location of the top two exposed fixing holes.
- Measure vertically down 85mm from each and mark a further two positions.
- Drill the wall and fit the wall plugs if required, then insert screws into the lower two positions leaving the heads about 3-4mm proud of the surface.
- Set the required mode (see Operation section) then engage the keyhole slots on the back of the lamp onto the two lower screws then fit and tighten the two upper screws to fix the lamp firmly into position.

## OPERATION

- **Allow at least 8hrs for the battery to fully charge initially.**

**NOTE:** the lamp does not light except in low ambient light levels.

1. Operation mode switch
2. Upper mounting holes
3. Lower keyhole mountings



- Slide the switch to set the mode of operation before installation.

### Modes:

**Off:** the lamp is permanently switched off.

**Mode 1:** in low ambient light the lamp illuminates at full intensity continuously.

**Mode 2:** in low ambient light the lamp illuminates at low intensity continuously and if motion is detected it illuminates at full intensity until 15 seconds after no further motion is detected.

**Mode 3:** the lamp remains off unless motion is detected then lights at full intensity until 15 seconds after no further motion is detected.

## CLEANING & MAINTENANCE

- Clean the unit only with a soft damp cloth. Do not use any chemicals, abrasives or solvents that could damage the casing or lens.

## SPECIFICATION

Solar panel: Polycrystal 5.5V 0.75W

Battery: 1 x 2200mAh, Li-ion battery 3.7V non-replaceable.

LED: 45 x white SMD

Colour LED: 6500K, white.

PIR: detection wide-angle lens of 120 degrees, range from 10 to 12m.

Operating modes: 3 modes plus permanently off.

Working time: up to 10 hours.

Dimensions: W172 x H115 x D45mm.



### INFORMATION ON WASTE DISPOSAL FOR CONSUMERS OF ELECTRICAL & ELECTRONIC EQUIPMENT.

When this product has reached the end of its life it must be treated as Waste Electrical & Electronic Equipment (WEEE). Any WEEE marked products must not be mixed with general household waste, but kept separate for the treatment, recovery and recycling of the materials used. Contact your local authority for details of recycling schemes in your area.



Made in China. PR2 9PP

Man Rev 1.0