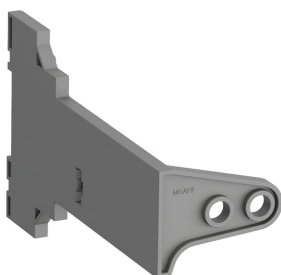


PRODUCT-DETAILS

MSAH1

MSAH1 Shaft Supporter



General Information

| | |
|-----------------------|---|
| Extended Product Type | MSAH1 |
| Product ID | 1SAM201909R1021 |
| EAN | 4013614483615 |
| Catalog Description | MSAH1 Shaft Supporter |
| Long Description | MSAH1 Shaft Supporter suitable for MS116, MS132/MO132 |

Ordering

| | |
|------------------------|----------|
| Minimum Order Quantity | 1 piece |
| Customs Tariff Number | 39269097 |

Popular Downloads

| | |
|-----------------------------------|--|
| Data Sheet, Technical Information | 1SBC100192C02-- |
| Instructions and Manuals | 2CDC131033M6801 |
| Dimension Diagram | 1SAM200437F0001 1SAM200438F0001 1SAM300414F0001 1SAM300415F0001 |

Dimensions

| | |
|----------------------------|----------|
| Product Net Width | 57 mm |
| Product Net Height | 90 mm |
| Product Net Depth / Length | 145 mm |
| Product Net Weight | 0.035 kg |

Technical

| | |
|----------------------------|-------------------------|
| Shaft Diameter | 6x6 mm |
| Product Name | Shaft Supporter |
| Suitable For | MS116 MS132 MO132 |
| Suitable for Product Class | Manual Motor Starter |
| Accessory Group | Mechanical |
| Accessory Type | Shaft Supporter |

Environmental

| | |
|-------------|---|
| RoHS Status | Following EU Directive 2002/95/EC August 18, 2005 and amendment |
|-------------|---|

Certificates and Declarations (Document Number)

| | |
|--------------------------------|-----------------------|
| Declaration of Conformity - CE | No declaration needed |
| Instructions and Manuals | 2CDC131033M6801 |
| RoHS Information | 1SAA963001-4407 |

Container Information

| | |
|--------------------------------|---------------|
| Package Level 1 Width | 150 mm |
| Package Level 1 Depth / Length | 90 mm |
| Package Level 1 Height | 220 mm |
| Package Level 1 Gross Weight | 0.04 kg |
| Package Level 1 EAN | 4013614483615 |
| Package Level 1 Units | 1 piece |

Classifications

| | |
|------------------------------------|--|
| Object Classification Code | X |
| ETIM 4 | EC002498 - Accessories for low-voltage switch technology |
| ETIM 5 | EC002498 - Accessories for low-voltage switch technology |
| ETIM 6 | EC002498 - Accessories for low-voltage switch technology |
| ETIM 7 | EC002498 - Accessories for low-voltage switch technology |
| eClass | 7.0 27379201 |
| UNSPSC | 39122221 |
| IDEA Granular Category Code (IGCC) | 5219 >> Switch part or accessory |

Categories

Low Voltage Products and Systems → Control Products → Manual Motor Starters → Manual Motor Starters Accessories

