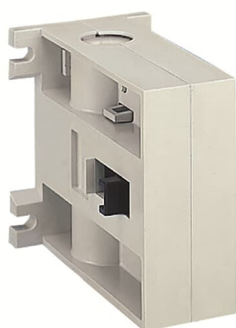


PRODUCT-DETAILS

# VM300/460H

## VM300/460H Mechanical Interlock Unit



### General Information

Extended Product Type	VM300/460H
Product ID	1SFN035100R1000
EAN	7320500222096
Catalog Description	VM300/460H Mechanical Interlock Unit
Long Description	Interlock unit for mechanical interlocking of two horizontal mounted a.c. or d.c. operated contactors of same or different rating according to catalog table

### Ordering

E-Number (Norway)	4116137
E-Number (Sweden)	4116137
EAN	7320500222096
Minimum Order Quantity	1 piece
Customs Tariff Number	85389099

### Dimensions

Product Net Width	70 mm
Product Net Height	123.6 mm
Product Net Depth / Length	50 mm
Product Net Weight	0.15 kg

---

**Container Information**


---

Package Level 1 Units	box 1 piece
Package Level 1 Width	160 mm
Package Level 1 Height	97 mm
Package Level 1 Depth / Length	60 mm
Package Level 1 Gross Weight	0.4 kg
Package Level 1 EAN	7320500222096

---



---

**Environmental**


---

RoHS Status	Following EU Directive 2011/65/EU
-------------	-----------------------------------

---



---

**Additional Information**


---

Product Main Type	VM300/460H
Product Name	Mechanical Interlock Unit
RoHS Date	1713
Suitable For	AF145 AF185 AF210 AF260 AF300
Suitable for Product Class	CONTACTORS
Terminal Type	Screw Terminals

---



---

**Certificates and Declarations (Document Number)**


---

Data Sheet, Technical Information	1SBC100122C0202
Declaration of Conformity - CE	2CMT005321
Environmental Information	1SFC101011D0201
Instructions and Manuals	1SFC380006-89
RoHS Information	2CMT005321

---



---

**Classifications**


---

ETIM 4	EC001044 - Mechanic interlock for switch
ETIM 5	EC001044 - Mechanic interlock for switch
ETIM 6	EC001044 - Mechanic interlock for switch
ETIM 7	EC001044 - Mechanic interlock for switch
Object Classification Code	R
UNSPSC	39121529
WEEE Category	Product Not in WEEE Scope

---

---

## Categories

---

Low Voltage Products and Systems → Control Products → Contactors → Block Contactors Accessories

