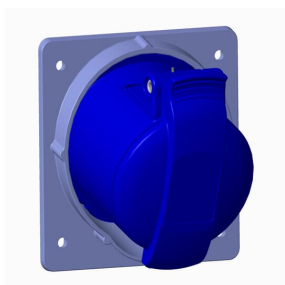


PRODUCT-DETAILS

## 216RAM6

Socket-outlet, panel mounting, 6h, 16A, IP44, minimized flange, angled, 2P+E



### General Information

Extended Product Type	216RAM6
Product ID	2CMA170004R1000
EAN	7392696700047
Catalog Description	Socket-outlet, panel mounting, 6h, 16A, IP44, minimized flange, angled, 2P+E
Long Description	Panel mounted socket, earthing sleeve position 6h, rated current 16A, IP44 splashproof, minimized flange, angled, 2-poles+earth, frequency 50-60 Hz, color code Blue

### Ordering

E-Number (Sweden)	E2416461
E-Number (Finland)	2421404
E-Number (Norway)	1564532
EAN	7392696700047
Country of Origin	Czech Republic (CZ)
Minimum Order Quantity	10 piece

### Dimensions

Product Net Width	78 mm
Product Net Height	78 mm

Product Net Length	84 mm
Product Net Depth / Length	84 mm
Product Net Weight	0.14 kg

## Container Information

Package Level 1 Width	138 mm
Package Level 1 Depth / Length	158 mm
Package Level 1 Height	345 mm
Package Level 1 Gross Weight	1.4 kg
Package Level 1 EAN	7392696702027
Package Level 1 Units	box 10 piece
Package Level 2 Units	660 piece

## Technical UL/CSA

Ampere Rating UL/CSA	16 A
Tightening Torque UL/CSA	7.1 in-lb

## Certificates and Declarations (Document Number)

Declaration of Conformity - CE	2CMC700005D0001
Declaration	2CMC700005D0001
Environmental Information	2CMC000056M0000
RoHS Information	2CMC700005D0001
SEMKO Certificate	1614201
REACH Declaration	2CMC700005D0001

## Additional Information

Additional Information	2P+E
Ambient Temperature	-25 ... 40 °C
Cable Cross-Section	1.5 ... 4 mm <sup>2</sup>
Cable Diameter	6 ... 13 mm
Color	Blue
Connection Type	Screw
Degree of Protection	IP44
Enclosure Material	Thermoplastic
Frequency (f)	50 Hz 60 Hz
Function	Panel mounted socket
Housing Material	Plastic (PA)
Invoice Description	Ind. P&S#216RAM6
Material	Plastic

Mounting Holes	55x55
Mounting Type	Minimized angled flange
Number of Poles	3
Order Multiple	10 piece
Product Main Type	ERAM
Product Name	Panel mounted socket
Protection Type	Splashproof
Rated Current ( $I_n$ )	16 A
Rated Frequency (f)	50...60 Hz
Rated Voltage ( $U_r$ )	200 ... 250 V
Recommended Screw Driver	PH2
RoHS Date	L23
Standards	IEC 60309-1, -2
Suitable For	Socket Outlets for Panel Mounting
Suitable for Product Class	IEC Industrial Plugs and Sockets
Instructions and Manuals	2CMC700002D0001
RAL Number	RAL 7001 - Silver Grey

---

## Classifications

eClass	27440504
UNSPSC	39121406

---

## Technical

Wire Size	14 ... 12 AWG
Tightening Torque	0.8 N·m

---

## Categories

Low Voltage Products and Systems → Industrial Plugs and Sockets → Easy & Safe → Socket Outlets for Panel Mounting



