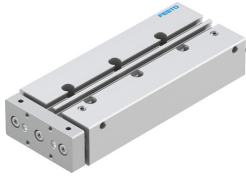


Guided actuator DFM-12-100-P-A-GF

Part number: 170831

FESTO



Data sheet

Feature	Value
Distance of centre of gravity of payload to yoke plate xs	25 mm
Max. permissible torque load Mx as a function of the stroke	0.4 Nm
Stroke	100 mm
Piston diameter	12 mm
Type code	DFM
Drive unit operating mode	Yoke
Cushioning	Elastic cushioning rings/pads at both ends
Mounting position	Any
Guide	Sliding guide
Design	Guide
Position sensing	For proximity sensor
Symbol	00991737
Operating pressure	2 bar ... 10 bar
Max. speed	0.8 m/s
Mode of operation	Double-acting
Operating medium	Compressed air as per ISO 8573-1:2010 [7:4:4]
Information on operating and pilot media	Operation with oil lubrication possible (required for further use)
Corrosion resistance class (CRC)	1 - Low corrosion stress
Ambient temperature	-20 °C ... 80 °C
Impact energy in the end positions	0.07 J
Max. payload as a function of the stroke at defined distance xs	19 N
Theoretical force at 6 bar, retracting	51 N
Theoretical force at 6 bar, advancing	68 N
Moving mass	318 g
Product weight	779 g
Alternative connections	See product drawing
Pneumatic connection	M5
Note on materials	RoHS-compliant
Cover material	Wrought aluminum alloy
Seals material	NBR
Housing material	Wrought aluminum alloy
Piston rod material	High-alloy stainless steel