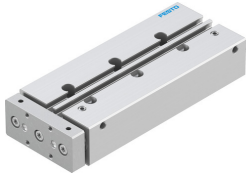


# Guided actuator DFM-12-100-P-A-KF

Part number: 170906

FESTO



## Data sheet

Feature	Value
Distance of centre of gravity of payload to yoke plate xs	25 mm
Max. static moment Mx	16.48 Nm
Max. static moment My	8.44 Nm
Max. permissible torque load Mx as a function of the stroke	0.48 Nm
Max. force Fz static	804 N
Max. force Fy static	804 N
Center of gravity of the moving mass as a function of the stroke	48.8 mm
Max. static moment Mz	8.44 Nm
Max. force Fy	292 N
Max. force Fz	292 N
Max. torque My	3.07 Nm
Max. torque Mz	3.07 Nm
Stroke	100 mm
Piston diameter	12 mm
Type code	DFM
Drive unit operating mode	Yoke
Cushioning	Elastic cushioning rings/pads at both ends
Mounting position	Any
Guide	Recirculating ball bearing guide
Design	Guide
Position sensing	For proximity sensor
Symbol	00991737
Operating pressure	2 bar ... 10 bar
Max. speed	0.8 m/s
Mode of operation	Double-acting
Operating medium	Compressed air as per ISO 8573-1:2010 [7:4:4]
Information on operating and pilot media	Operation with oil lubrication possible (required for further use)
Corrosion resistance class (CRC)	0 - No corrosion stress
Ambient temperature	-5 °C ... 60 °C
Impact energy in the end positions	0.07 J
Max. torque Mx	5.99 Nm
Max. payload as a function of the stroke at defined distance xs	20 N
Theoretical force at 6 bar, retracting	51 N
Theoretical force at 6 bar, advancing	68 N
Moving mass	257 g
Product weight	737 g

<b>Feature</b>	<b>Value</b>
Alternative connections	See product drawing
Pneumatic connection	M5
Note on materials	Free of copper and PTFE RoHS-compliant
Cover material	Wrought aluminum alloy
Seals material	NBR
Housing material	Wrought aluminum alloy
Piston rod material	High-alloy stainless steel