

MH05A Series - Cat 5E Data Twist Patch Cables

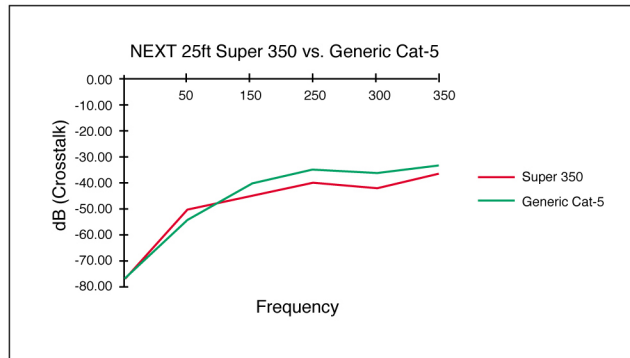
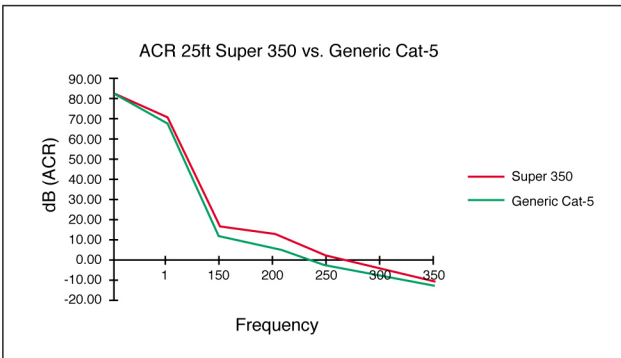


MH05A - 010 - A - R

Size _____
010 = 1.0m, 020 = 2.0m, 030 = 3.0m etc

Colour _____
GY = Grey, R = Red,
B = Blue, G = Green,
Y = Yellow, BK = Black

- Beldens exclusive Data Twist 350 cable - stable performance up to 350MHz.
- Moulded strain relief ensures connection keeps cable within Cat 5 bending radius.
- Exclusive short body RJ45 plug provides lowest NEXT in its class.
- Available in custom colours and lengths.
- Belden tested and certified.

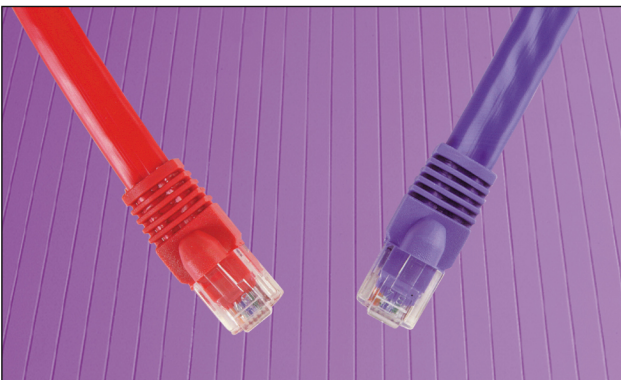


- Test conducted by Belden labs.
- Generic Cat 5 patch cable terminated with standard RJ45 plugs.
- Detailed test reports available on request.

Test procedures:

1. Test Belden MediaTwist 350 at 90m.
2. Add 25ft of DataTwist to MediaTwist and run test.
3. Add 25ft of Generic Cat 5 to MediaTwist and run test.

MH05T Series - Cat 5E Media Twist Patch Cables



MH05T - 050 - A - B

Size _____
010 = 1.0m, 020 = 2.0m, 030 = 3.0m etc

Colour _____
GY = Grey, R = Red,
B = Blue, G = Green,
Y = Yellow, BK = Black

- Tested and certified on multiple systems above 100MHz - ideal for multimedia applications.
- Delivers stable performance to 350MHz with electrical characteristics exceeding TIA/EIA Category 5 standards.
- Unique crescent shape design - ensures that pair to pair movement is minimised during installation.