

Customer Information Sheet

DRAWING No.- M80-887XXXX

SHEET 2 OF 2

IF IN DOUBT - ASK

©

NOT TO SCALE

THIRD ANGLE PROJECTION

ALL DIMENSIONS IN mm

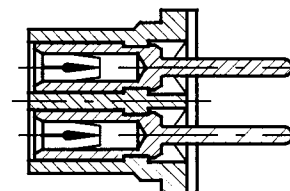
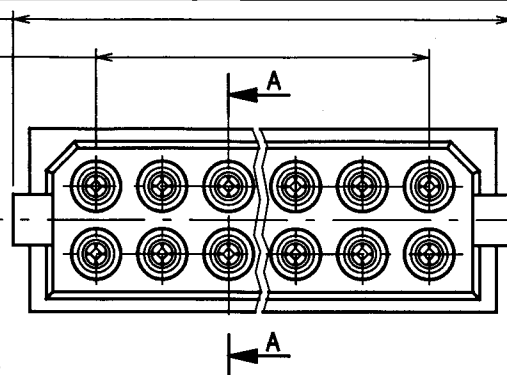
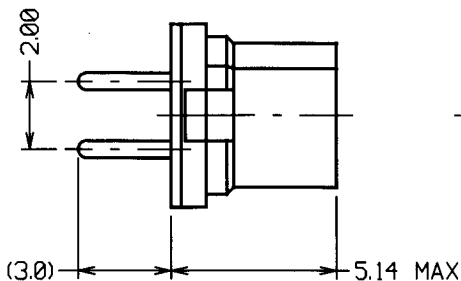
2.00 x No. OF WAYS PER ROW + 3.15 MAX

2.00 x No. OF PITCHES PER ROW

COMMERCIAL
ORDER CODE:
M80-887XXXX

TOTAL No. OF WAYS
04, 06, 08, 10, 12, 14, 16,
18, 20, 26, 34, 44

FINISH
01 - GOLD CLIP, TIN SHELL
05 - GOLD CLIP, GOLD SHELL
T6 - TIN CLIP, TIN SHELL

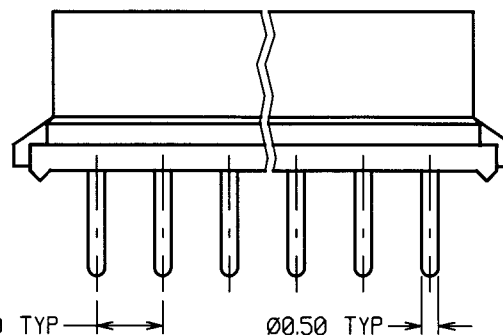


SECTION A-A

BRITISH STANDARD
ORDER CODE: TO BS9525 F0033
B5741-2XX-F-T-X

TOTAL No. OF WAYS
04, 06, 08, 10, 12, 14, 16,
18, 20, 26, 34, 44

FINISH
0 - GOLD CLIP, TIN SHELL
2 - GOLD CLIP, GOLD SHELL



SPECIFICATIONS:

MATERIAL:
MOULDING - GLASS-FILLED POLYESTER UL94V-0
CLIP - BERYLLIUM COPPER
SHELL - BRASS

FINISH:
CONTACTS:
01 - 0.30µ GOLD CLIP, 4.0µ TIN SHELL
05 - 0.30µ GOLD CLIP, 0.28µ GOLD SHELL
T6 - 1.3µ 90/10 TIN/LEAD CLIP, 4.0µ TIN SHELL

MECHANICAL:
DURABILITY - 500 OPERATIONS
INSERTION FORCE - 2.8N MAX, 1.0N MIN
WITHDRAWAL FORCE - 1.8N MAX, 0.2N MIN

PACKING:
TUBE

ELECTRICAL:
CURRENT RATING AT 25°C - 3.0A MAX
CURRENT RATING AT 85°C - 2.2A MAX
WORKING VOLTAGE - 120V AC/DC
VOLTAGE PROOF - 360V AC/DC
CONTACT RESISTANCE (INITIAL) - 20 MILLIOHMS MAX
CONTACT RESISTANCE (AFTER CONDITIONING) - 25 MILLIOHMS MAX
INSULATION RESISTANCE (INITIAL) - 1000 MEGOHMS MIN
INSULATION RESISTANCE (AFTER CONDITIONING) - 100 MEGOHMS MIN

ENVIRONMENTAL:
TEMPERATURE RANGE - -55°C TO +125°C

NOTES:

1. RECOMMENDED HOLE SIZE - $\varnothing 0.80$ mm.

FOR COMPLETE SPECIFICATION, SEE COMPONENT SPECIFICATION C005XX (LATEST ISSUE)

8	06.11.98	4630
ISS.	DATE	C/N
APPROVED: <i>[Signature]</i>		
CHECKED: <i>[Signature]</i>		
DRAWN: J. J. BOURNE		
CUSTOMER REF.		
ASSEMBLY DRG:		

HARWIN

HARWIN INC
U.S.A.
TEL: (812) 285 0055
FAX: (812) 285 0056

HARWIN PLC
U.K.
TEL: 01705 370451
FAX: 01705 314590

HARWIN PTE
SINGAPORE
TEL: 65 7794909
FAX: 65 7793868

TOLERANCES

X - ± 1 mm
X.X - ± 0.25 mm
X.XX - ± 0.10 mm
X.XXX - ± 0.01 mm
ANGLES - $\pm 1^\circ$
UNLESS STATED

MATERIAL:

SEE ABOVE

FINISH: SEE ABOVE

S/AREA: mm²

TITLE: DATAMATE 2mm PITCH
VERTICAL PC TAIL DIL
SOCKET ASSEMBLY

DRAWING NUMBER:

M80-887XXXX

SHT
2 OF 2