

16

1610 04

Power supply connectors

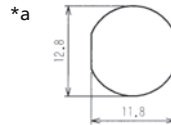
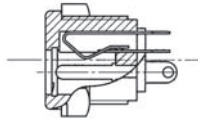
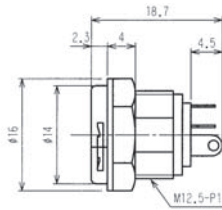
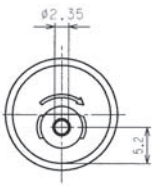


Power supply chassis socket, straight version, with bayonet lock, with break contact and solder eyes, for front side mounting

State: Active

16

1610 04



Environmental conditions

Temperature range -20 °C/+70 °C

Materials

Insulating body ABS, HB according to UL94
Contact Cu alloy, nickel-plated/tin-plated

Mechanical data

Diameter opening 6,3 mm
Diameter center pin 2,35 mm
Mating cycles ≥ 5000

Electrical data (at T_{amb} 20 °C)

Contact resistance ≤ 30 m Ω
Rated current 1 A
Rated voltage 12 V DC
Rated impulse voltage 250 V/60 s
Insulation resistance ≥ 100 M Ω

Associated products

Counterparts
☑ 1634 01

*a port in mounting plate

16

1610 04

Designation	Pole Number	PU (Pieces)	MDQ (Pieces)
1610 04	2	250	500

Packaging:

in bulk, in a cardboard box or a plastic bag