

50 Series Shell Case with End Panel

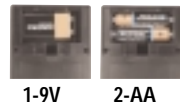
A very versatile shell enclosure with removable end plate. Recessed area for membrane keypad optional. Battery options include: 1 9V cell, 2-AA or No battery

Battery Options:

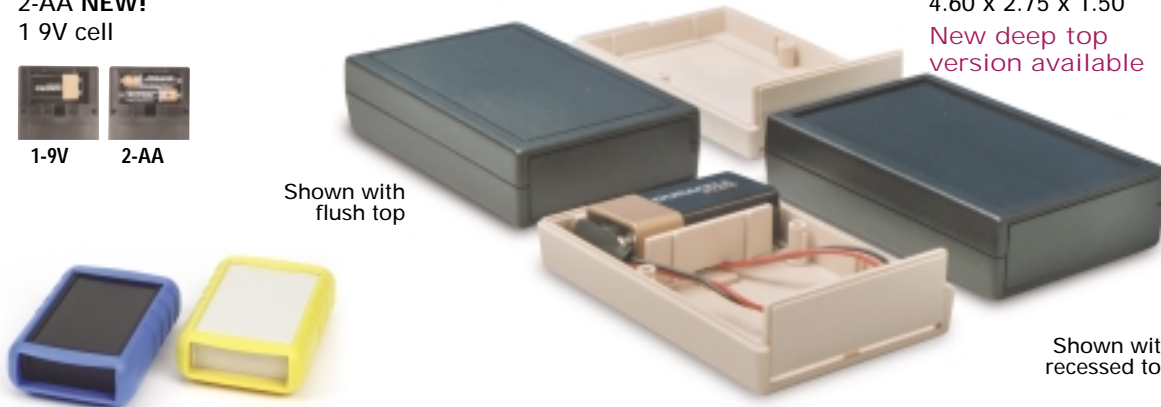
- No Battery
- 2-AA **NEW!**
- 1 9V cell

Dimensions:

- 4.60 x 2.75 x 1.00
- 4.60 x 2.75 x 1.50
- New deep top version available**



1-9V 2-AA



Shown with flush top

Shown with recessed top

	Flush Top - Black	Flush Top - Bone	Recessed Top - Black	Recessed Top - Bone
Dimensions	4.6 x 2.75 x 1.00"	4.6 x 2.75 x 1.00"	4.6 x 2.75 x 1.00"	4.6 x 2.75 x 1.00"
Description	Part No.	Part No.	Part No.	Part No.
Case with NO Battery Compartment	50-12-NO-F-BL	50-12-NO-F-BO	50-12-NO-R-BL	50-12-NO-R-BO
Case with 9V Battery Compartment	50-12-9V-F-BL	50-12-9V-F-BO	50-12-9V-R-BL	50-12-9V-R-BO
Case with 2AA Battery Compartment	50-12-2A-F-BL	50-12-2A-F-BO	50-12-2A-R-BL	50-12-2A-R-BO

NEW Deep Top Version	Flush Top - Black	Flush Top - Bone	Recessed Top - Black	Recessed Top - Bone
Dimensions	4.6 x 2.75 x 1.50"	4.6 x 2.75 x 1.50"	4.6 x 2.75 x 1.50"	4.6 x 2.75 x 1.50"
Description	Part No.	Part No.	Part No.	Part No.
Case with NO Battery Compartment	50-32-NO-F-BL	50-32-NO-F-BO	50-32-NO-R-BL	50-32-NO-R-BO
Case with 9V Battery Compartment	50-32-9V-F-BL	50-32-9V-F-BO	50-32-9V-R-BL	50-32-9V-R-BO
Case with 2AA Battery Compartment	50-32-2A-F-BL	50-32-2A-F-BO	50-32-2A-R-BL	50-32-2A-R-BO

ACCESSORIES

	Light Blue	Dark Blue	Bright Orange	Bright Yellow	Red	Black
Protective Boot w/Integrated tilt bar	Part No.	Part No.	Part No.	Part No.	Part No.	Part No.
	50-RBT-LBL	50-RBT-DBL	50-RBT-ORG	50-RBT-YEL	50-RBT-RED	50-RBT-BLK

	2AA set	9V snap on
Battery Clip Sets	Part No.	Part No.
	BAT-2A	BAT-9VS

	Bone	Black
Belt Clips	Part No.	Part No.
	CLP-BONE	CLP-BLK

	ABS, Black	Transparent Red	ABS Bone
End Plates	Part No.	Part No.	Part No.
Standard End Plate	50-EPBLK	50-EPIR	50-EPBO
Deep Top End Plate	51-EPBLK	51-EPIR	51-EPBO





ENCLOSING ELECTRONICS ONE BOX AT A TIME

ENCLOSURES & ASSEMBLY SERVICES

ENCLOSURES & ASSEMBLY SERVICES

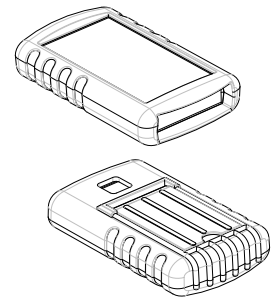
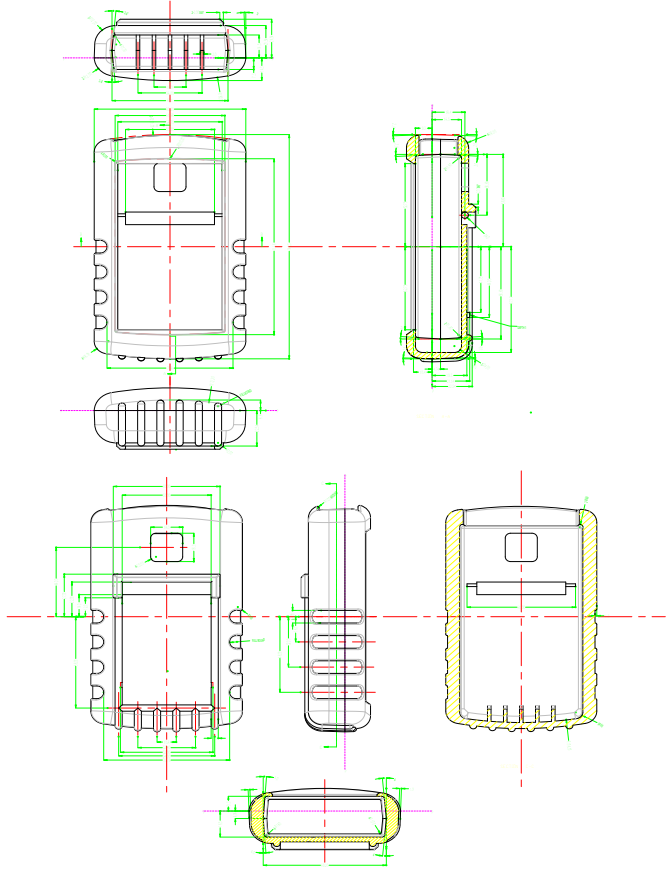
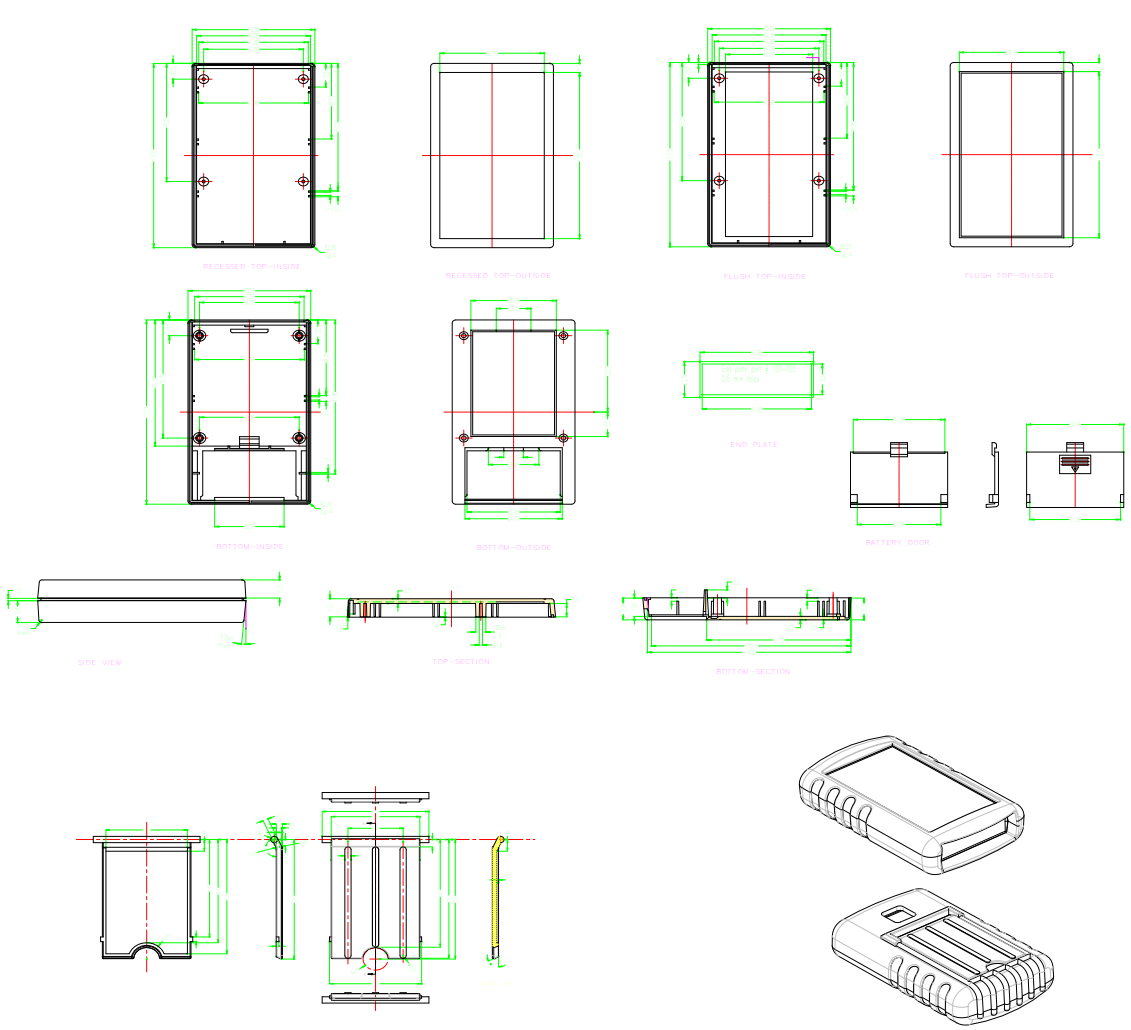
BOX ENCLOSURES, INC

28835 N. HERKY DRIVE, #114,
LAKE BLUFF, IL 60044

TEL: 847-932-4700

WWW.BOXENCLOSURES.COM

FAX: 847-932-4701

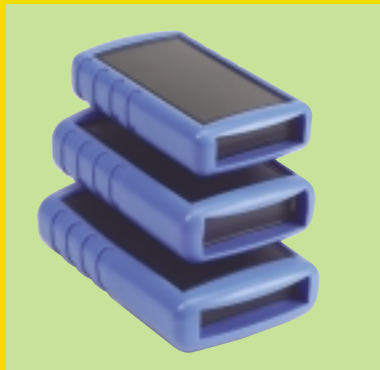
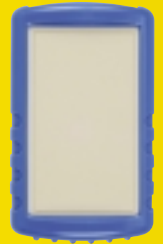


		ENCLOSING ELECTRONICS ONE BOX AT A TIME		Revision:	
ENCLOSURES & ASSEMBLY SERVICES		ENCLOSURES & ASSEMBLY SERVICES		Model:	
Title		50-SERIES		Dwg. No.:	
Material:		TOLERANCE all dimension in mm unless otherwise specified.		Color:	
Finish:		x ±0.20 .x ±0.10 .xx ±0.05		Qty:	
Proj.		ANGLE ±0.5°		App. Date	
		A4 Sheet of		Part No.:	
				Drn. Date Tan zonghaun Apr 10 04	
				Chk. Date	

THIS DRAWING IS THE PROPERTY OF AND MAY EMBODY PROPRIETARY INFORMATION OWNED BY X-Box Enclosures. IT IS PROVIDED UNDER A CONFIDENTIAL RELATIONSHIP FOR A SPECIFIC PURPOSE. THE RECIPIENT AGREES TO USE IT ONLY FOR SUCH PURPOSE AND RETURN IT TO X-Box Enclosure UPON REQUEST.

New for 2004

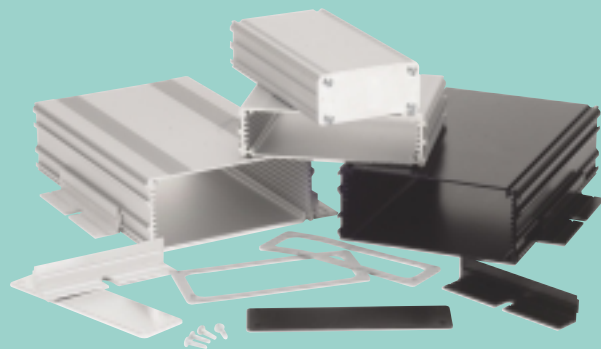
Featuring eight new product lines with protective rubber boots.



NEMA 4 / IP65 Enclosures



Extruded Aluminum



Protective Boots

NEW!



LCD Enclosures

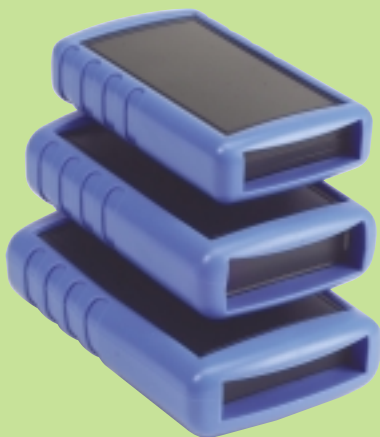


ENCLOSURES & ASSEMBLY SERVICES

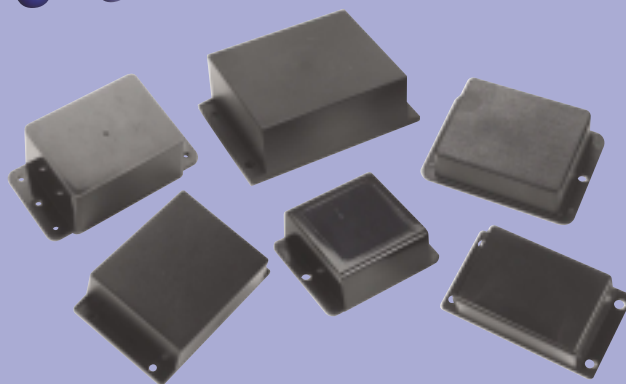
Enclosing electronics one box at a time.



Handheld Enclosures



Flange Cases



See back page for International Distribution Network