

# Type 499



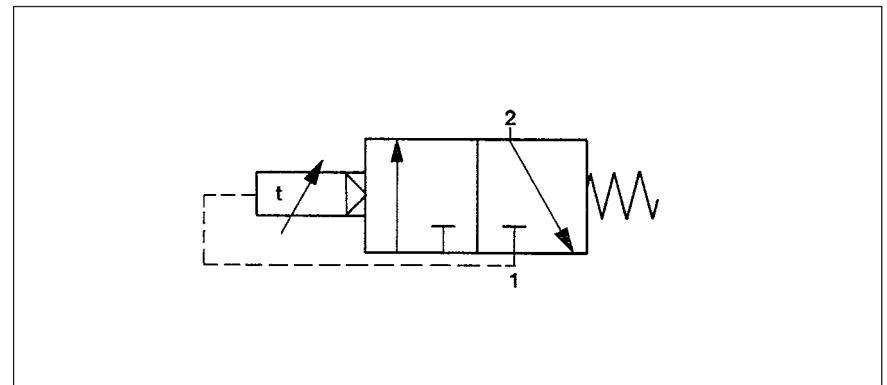
## TECHNICAL DATA

# Pneumatic Timer

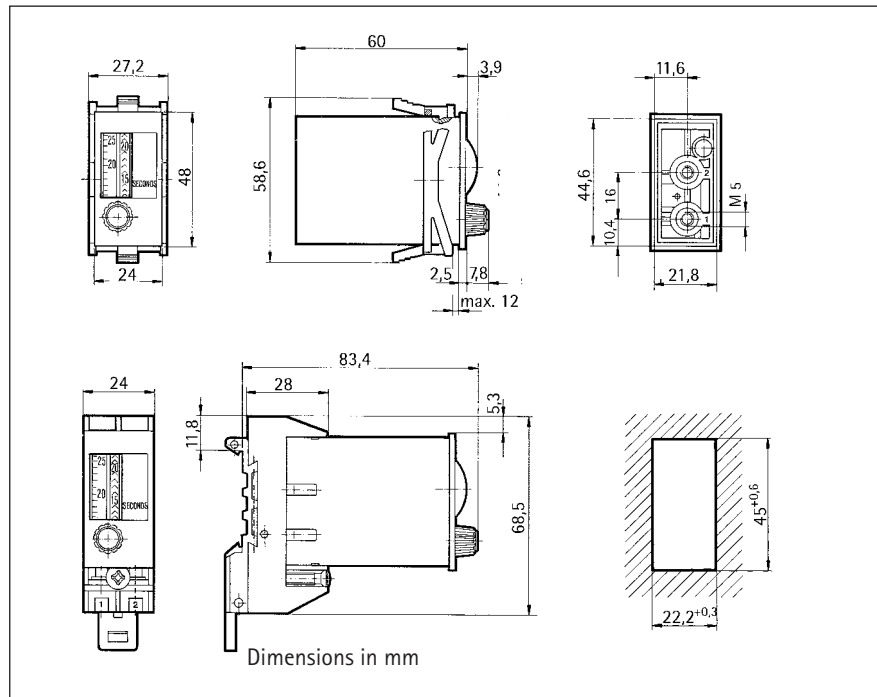
- Low-cost
- DIN dimensions
- Requires little space for installation
- Pressure-independent
- No continuous air supply required
- Stationary preset value

|                            |  |
|----------------------------|--|
| Display                    | digit roll   |
| Time range                 | 0.2 ... 3 s, 2 ... 30 s or 20 ... 300 s, depending on version    |
| Operating pressure         | 2 ... 6 bar  |
| Air quality                | oilfree  |
| Filter pore width          | < 40 μs  |
| Operating temperature      | 0 ... + 60 °C  |
| Connection                 | hose coupler M5 or rapid-fit connection, depending on version    |
| Mounting                   | clamping spring or DIN rail attachment                           |
| Protection class (IEC 144) | IP 40  |
| Weight                     | approx. 50 g   |
| Input                      | timer is started when input 1 is pressurized                     |
| Time setting               | continuous with rotary knob                                      |
| Timing range               | 0.2-3 s    2-30 s    20-300 s                                    |
| Repeating accuracy         | ± 0.1 s    ± 0.3 s    ± 3 s                                      |
| Setting accuracy           | ± 0.3 s    ± 0.6 s    ± 6 s                                      |
| Reset                      | by blocking air intake at input 1                                |
| Reset time                 | min. 200 ms  |
| Output                     | after the set time has elapsed, input 1 is connected to output 2 |

## CONNECTION DIAGRAM



## DIMENSIONED DRAWINGS



## ORDER INFORMATION

### Timer

|                      | Time range  | Time range | Time range   |
|----------------------|-------------|------------|--------------|
| Connection           | 0.2 ... 3 s | 2 ... 30 s | 20 ... 300 s |
| Hose coupler M5      | 0 499 520   | 0 499 500  | 0 499 550    |
| Rapid-fit connection | 0 499 521   | 0 499 501  | 0 499 551    |

### Panel frame

| Dimensions | Installation dimensions | Ordering code |
|------------|-------------------------|---------------|
| 48 x 48 mm | 45 x 45 mm              | 2 405 219     |
| 52 x 52 mm | 45 x 45 mm              | 2 405 220     |
| 54 x 29 mm | 50 x 25 mm              | 2 405 218     |
| ∅ 59 mm    | ∅ 50 mm                 | 2 405 224     |
| 60 x 75 mm | 52 x 52 mm              | 1 499 512     |
| 72 x 72 mm | 68 x 68 mm              | 1 405 672     |

### Accessories

|  |  |           |
|--|--|-----------|
| Socket for DIN rail attachment                   |  |           |
| - Hose screw coupler                             |  | 1 499 511 |
| - Rapid-fit connector                            |  | 1 499 513 |
| Please do not forget to add one of the following |  |           |
| Bypass slides to your order:                     |  |           |
| - Bypass slide for 35 mm H-rail                  |  | 3 513 306 |
| - Bypass slide for C-rail                        |  | 3 513 307 |

Automatic reset see automatic reset module

# Automatic Reset Module for Pneumatic Timers



- Output signal of adjustable length 0.2 to 2 seconds
- DIN dimensions
- Compact design
- Stationary preset value

## TECHNICAL DATA Pneumatic

|                      |   |
|----------------------|---|
| Service pressure     | 2 ... 6 bar   |
| Bursting pressure 12 | 10 bar  |
| Nominal pressure     | 4 bar   |
| Air quality          | filtered (40 µm), non-oiled compressed air,<br>light oil mist permissible |

### Input

|                   |               |
|-------------------|---------------|
| Response pressure | 1.2 ± 0.4 bar |
| Drop pressure     | 0.3 ± 0.2 bar |
| Pulse length      | min. 30 ms    |
| Pause for reset   | min. 200 ms   |

### Time ranges

|                               |                              |
|-------------------------------|------------------------------|
| Switching delay time          | adjustable from 0.2 – 2 sec. |
| Signal interruption time      | min. 300 ms                  |
| Repeating accuracy            | ± 0.3 s                      |
| based on switching delay time |                              |

### Temperature range

|                               |   |
|-------------------------------|---|
| Application class (DIN 40040) | KUG<br>K = lower temperature limit: -15 °C<br>U = upper temperature limit: + 60 °C<br>G = average relative humidity: 65 %<br>without condensation |
|-------------------------------|---|

|                              |  |
|------------------------------|--|
| Storage temperature          | - 25 ... + 70 °C                       |
| Protection class (DIN 40050) | IP 40<br>IP 54 (with protective cover) |

|   |  |
|---|--|
| Substances which inhibit application of paint according to VW test specification no. 3.10.7 | none   |
| Dimensions  | 24 x 48 x 68 mm (W x H x D)  |
| Insertion depth without connect.  | 57.5 mm  |
| Front panel cutout  | 22.2 <sup>+0.3</sup> x 45 <sup>+0.6</sup> mm (W x H)<br>(Other front panel cutout dimensions possible with additional panel frame) |

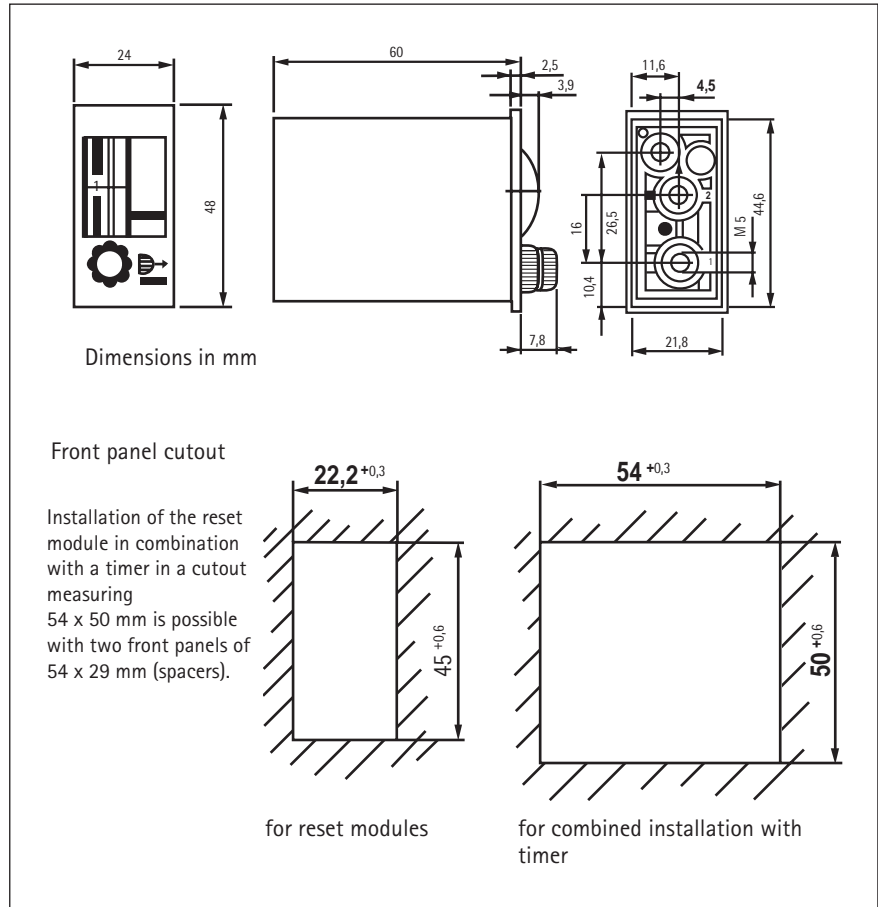
### Mounting

|                                   |  |
|-----------------------------------|--|
| for front panel insertion         | by means of clamping frames                                    |
| Pneum. connections                | M5 or rapid-fit coupling for hoses with 4 mm external diameter |
| Tightening torque for connections | max. 250 Ncm   |
| Mounting position                 | any  |
| Weight                            | approx. 50 g   |

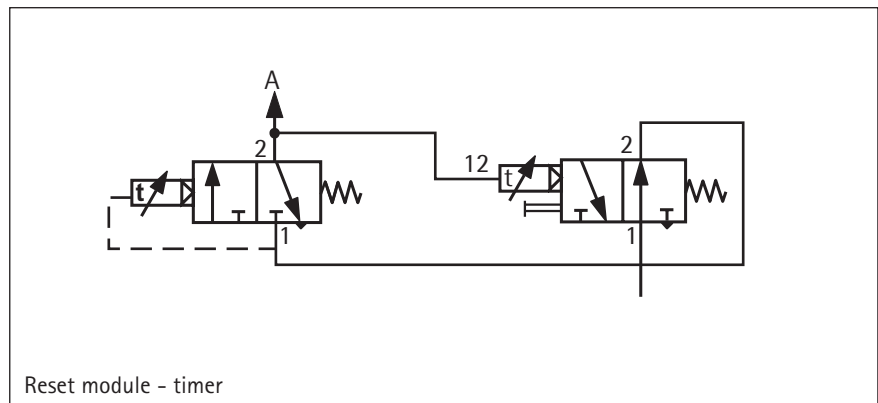
## Mechanical

# Automatic Reset Module

## DIMENSIONED DRAWING



## CONNECTION DIAGRAM



## ORDER INFORMATION

### Accessories

|  | Ordering code |
|--|---------------|
| Pneum. reset module M5                 | 0 499 350     |
| Pneum. reset module rapid-fit coupling | 0 499 351     |
| Front panel 54 x 29 mm                 | 2 405 218     |

(For further accessories, please refer to the pneumatic timers)

# Pneumatic Signal Indicator

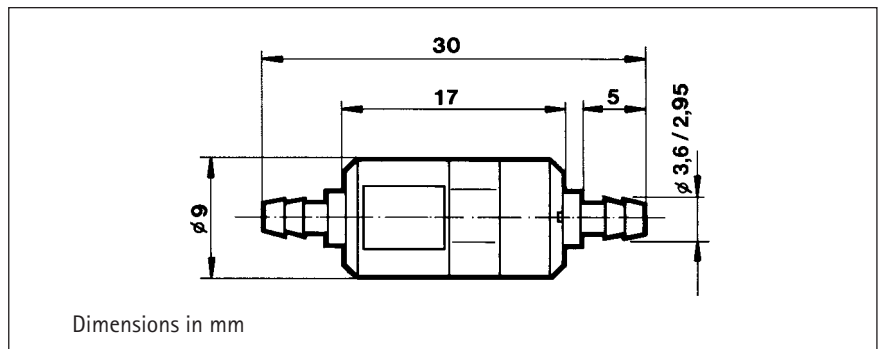


- Signals the operating status of pneumatic hose connections
- Simple installation
- Connections for hoses with 2 or 3 mm inside diameter
- Service pressure 2...8 bar

## TECHNICAL DATA

|                            |   |
|----------------------------|---|
| Indication                 | yellow signal as long as a line is pressurized          |
| Service pressure           | 2 ... 8 bar   |
| Air quality                | filtered, light oil mist permissible                    |
| Filter pore width          | < 40 µm   |
| Operating temperature      | - 15 ... + 60 °C  |
| Storage temperature        | - 25 ... + 70 °C  |
| Connection                 | hose with 2 or 3 mm inside diameter, dep. on version    |
| Mounting                   | at connection hose                                      |
| Vibrostability             | 50 m/s <sup>2</sup> (10 ... 500 Hz) acc. to IEC 068-2-6 |
| Shock stability            | 500 m/s <sup>2</sup> (5 ms) acc. to IEC 068-2-27        |
| Maintenance-free operation | > 30 million switching operations                       |
| Weight                     | 2 g   |

## DIMENSIONED DRAWING



## ORDER INFORMATION

|  |                         |
|--|-------------------------|
| Signal indicator for hoses with 2 mm inside diameter | Ordering code 0 499 210 |
| Signal indicator for hoses with 3 mm inside diameter | Ordering code 0 499 211 |