

Low Loss 7/16 DIN Male to N Female Cable Assembly using LMR-600-DB Coax, 1 FT with Times Microwave Components



**LCCA30348-FT1**

**Configuration**

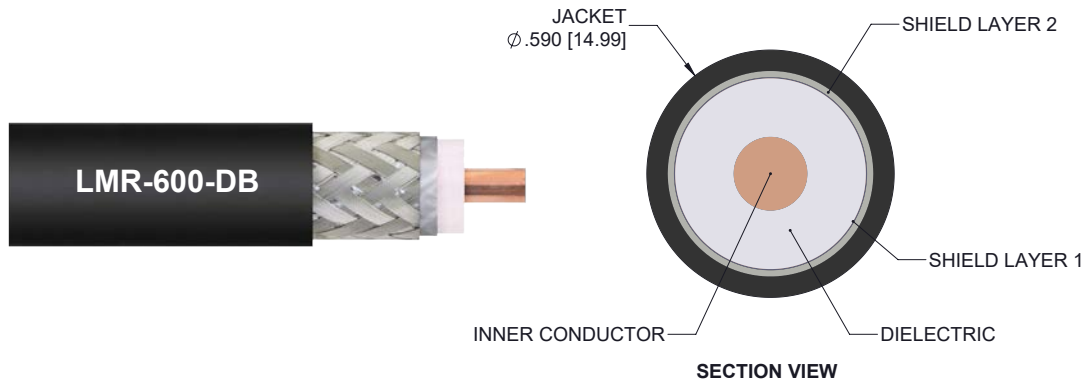
- Connector 1: 7/16 DIN Male
- Connector 2: N Female
- Cable Type: LMR-600-DB

**Features**

- Using Times Microwave Components
- Max Frequency 5.8 GHz
- Shielding Effectivity > 90 dB
- 87% Phase Velocity
- PE Jacket
- Low Insertion Loss
- Bend Radius of 6 Inches

**Applications**

- General Purpose
- Laboratory Use
- Antenna Installations
- Land Mobile Radio & Other Communication Systems
- Cellular & Wi-Fi Systems



**Description**

L-com's LCCA30348-FT1 is a low loss 7/16 DIN male to N female cable assembly using LMR-600-DB coax, 1 FT with Times Microwave components and ships same-day. The LMR-600-DB coax of this 7/16 DIN cable uses the PE (F) dielectric with a VoP of 87%, resulting in very low insertion loss compared to solid dielectrics. These flexible RF cable assemblies are ideal for applications where flexure is required. Our L-com 7/16 DIN to N cable assembly has a male to female gender configuration with flexible LMR-600-DB series coax and operates to 5.8 GHz. The double shield of this 7/16 DIN cable is layered by tinned copper braid over aluminum tape providing shielding effectiveness greater than 90dB. \*LMR™ is a trademark of Times Microwave Systems.

Custom versions of this 7/16 DIN male to 7/16 DIN female cable, along with the rest of L-com's other RF assemblies, can also be built and shipped same day. Other available RF cable assembly value added services from L-com include connector orientation or clocking, heat shrink booting and custom labeling. RF testing can also be performed to document the electrical performance of your cable assembly. Contact a sales representative for testing or custom RF cable quotes. Part number LCCA30348-FT1 L-com Low Loss 7/16 DIN Male to N Female Cable Assembly using LMR-600-DB Coax, 1 FT with Times Microwave Components data sheet PDF includes details of the RF product specifications, CAD drawing(s) and dimensions below.

Low Loss 7/16 DIN Male to N Female Cable Assembly using LMR-600-DB Coax, 1 FT with Times Microwave Components



## LCCA30348-FT1

### Electrical Specifications

Description	Minimum	Typical	Maximum	Units
Frequency Range	DC		5.8	GHz
VSWR			1.4:1	
Velocity of Propagation		87		%
RF Shielding	90			dB
Group Delay		1.17 [3.84]		ns/ft [ns/m]
Capacitance		23.4 [76.77]		pF/ft [pF/m]
Inductance		0.058 [0.19]		uH/ft [uH/m]
DC Resistance Inner Conductor		0.53 [1.74]		Ohms/1000ft [Ohms/Km]
DC Resistance Outer Conductor		1.2 [3.94]		Ohms/1000ft [Ohms/Km]
Jacket Spark			8,000	Vrms

### Specifications by Frequency

Description	F1	F2	F3	F4	F5	Units
Frequency	0.25	0.5	1	2.5	5.8	GHz
Insertion Loss (Typ.)	0.21	0.22	0.23	0.24	0.27	dB

#### Electrical Specification Notes:

The Insertion Loss data above is based on the performance specifications of the coax cable and connectors used in this assembly. The Insertion Loss includes an estimated insertion loss of 0.1 dB per connector.

### Mechanical Specifications

#### Cable Assembly

Length	12 in [304.8 mm]
Diameter	1.25 in [31.75 mm]

#### Cable

Cable Type	LMR-600-DB
Impedance	50 Ohms
Inner Conductor Type	Solid
Inner Conductor Material and Plating	Copper Clad Aluminum
Dielectric Type	PE (F)
Number of Shields	2
Shield Layer 1	Aluminum Tape
Shield Layer 2	Tinned Copper Braid

Low Loss 7/16 DIN Male to N Female Cable Assembly using LMR-600-DB Coax, 1 FT with Times Microwave Components



## LCCA30348-FT1

Jacket Material	PE, Black
Jacket Diameter	0.59 in [14.99 mm]
One Time Minimum Bend Radius	1.5 in [38.1 mm]
Repeated Minimum Bend Radius	6 in [152.4 mm]
Bending Moment	2.75 lbs-ft [3.73 N-m]
Flat Plate Crush	60 lbs/in [1.07 Kg/mm]
Tensile Strength	350 lbs [158.76 Kg]

### Connectors

Description	Connector 1	Connector 2
Type	7/16 DIN Male	N Female
Impedance	50 Ohms	50 Ohms
Contact Material and Plating	Copper, Silver	Bronze, Gold
Contact Plating Specification	196µ in. minimum	
Dielectric Type	PTFE	PTFE
Outer Conductor Material and Plating	Brass, Tri-Metal	
Outer Conductor Plating Specification	78µin. minimum	
Body Material and Plating	Brass, Tri-Metal	Brass, Tri-Metal
Body Plating Specification	78µ in. minimum	
Coupling Nut Material and Plating	Brass, Nickel	
Coupling Nut Plating Specification	196µ in. minimum	
Hex Size	1 1/4 in	
Torque	18.417 ft-lbs 24.97 Nm	

### Environmental Specifications

#### Temperature

Operating Range	-40 to +85 deg C
Storage Range	-70 to +85 deg C

**Compliance Certifications** (see [product page](#) for current document)

### Plotted and Other Data

Notes:

Low Loss 7/16 DIN Male to N Female Cable Assembly using LMR-600-DB Coax, 1 FT with Times Microwave Components



## LCCA30348-FT1

### How to Order

Part Number Configuration:

**LCCA30348 - xx uu**



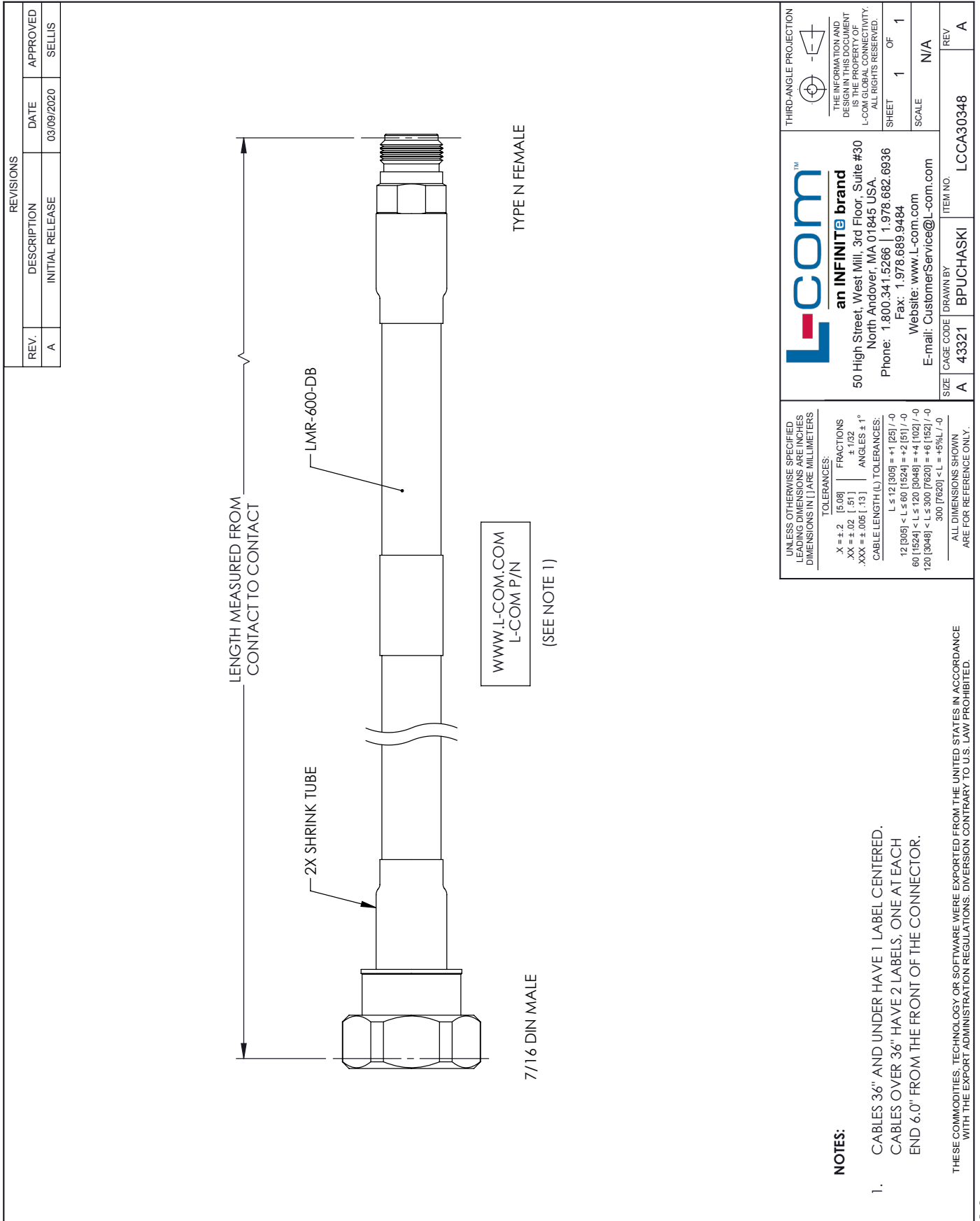
Example: LCCA30348-12 = 12 inches long cable  
LCCA30348-100cm = 100 cm long cable

Low Loss 7/16 DIN Male to N Female Cable Assembly using LMR-600-DB Coax, 1 FT with Times Microwave Components from L-com has same day shipment for domestic and International orders. L-com is a leading manufacturer of wired and wireless connectivity products and committed to in-stock availability and same day shipping. Our portfolio includes coaxial cable assemblies, connectors, adapters and custom products as well as lightning and surge protectors, NEMA rated enclosures, and an RF product line which includes antennas, amplifiers, passive, and active components.

The information contained within this document is accurate to the best of our knowledge and representative of the part described herein. It may be necessary to make modifications to the part and/or the documentation of the part in order to impliment improvements. L-com reserves the right to make such changes as required. Unless otherwise stated, all specifications are nominal. L-com does not make any representation or warranty regarding the suitability of the part described herein for any particular purpose, and L-com does not assume liability arising out of the use of any part or document.ontained within this document is accurate to the best of our knowledge and representative of the part described herein. It may be necessary to make modifications to the part and/or the documentation of the part in order to impliment improvements. L-com reserves the right to make such changes as required. Unless otherwise stated, all specifications are nominal. L-com does not make any representation or warranty regarding the suitability of the part described herein for any particular purpose, and L-com does not assume liability arising out of the use of any part or document.

Low Loss 7/16 DIN Male to N Female Cable Assembly using LMR-600-DB  
DB Coax, 1 FT with Times Microwave Components

L-com CAD Drawing



<p><b>UNLESS OTHERWISE SPECIFIED LEADING DIMENSIONS ARE INCHES DIMENSIONS IN [ ] ARE MILLIMETERS</b></p> <p><b>TOLERANCES:</b></p> <table style="width: 100%; border: none;"> <tr> <td>.X = ± .2</td> <td>[5.08]</td> <td>FRACTIONS</td> <td>± 1/32</td> </tr> <tr> <td>.XX = ± .02</td> <td>[.51]</td> <td>ANGLES ± 1°</td> <td></td> </tr> <tr> <td>.XXX = ± .005</td> <td>[.13]</td> <td>CABLE LENGTH (L) TOLERANCES:</td> <td></td> </tr> <tr> <td></td> <td></td> <td>L ≤ 12 [305]</td> <td>± 1 [25] / -0</td> </tr> <tr> <td></td> <td></td> <td>12 [305] &lt; L ≤ 60 [1524]</td> <td>± 2 [61] / -0</td> </tr> <tr> <td></td> <td></td> <td>60 [1524] &lt; L ≤ 120 [3048]</td> <td>± 4 [102] / -0</td> </tr> <tr> <td></td> <td></td> <td>120 [3048] &lt; L ≤ 300 [7620]</td> <td>± 6 [152] / -0</td> </tr> <tr> <td></td> <td></td> <td>300 [7620] &lt; L = ∞</td> <td>± 9% L / -0</td> </tr> </table> <p>ALL DIMENSIONS SHOWN ARE FOR REFERENCE ONLY.</p>	.X = ± .2	[5.08]	FRACTIONS	± 1/32	.XX = ± .02	[.51]	ANGLES ± 1°		.XXX = ± .005	[.13]	CABLE LENGTH (L) TOLERANCES:				L ≤ 12 [305]	± 1 [25] / -0			12 [305] < L ≤ 60 [1524]	± 2 [61] / -0			60 [1524] < L ≤ 120 [3048]	± 4 [102] / -0			120 [3048] < L ≤ 300 [7620]	± 6 [152] / -0			300 [7620] < L = ∞	± 9% L / -0	<p style="text-align: center;"><b>L-com™</b> an INFINITE brand</p> <p>50 High Street, West Mill, 3rd Floor, Suite #30 North Andover, MA 01845 USA. Phone: 1.800.341.5266   1.978.682.6936 Fax: 1.978.689.9484 Website: www.L-com.com E-mail: CustomerService@L-com.com</p> <p style="text-align: center;">THIRD-ANGLE PROJECTION</p> <p style="text-align: center;">THE INFORMATION AND DESIGN IN THIS DOCUMENT IS THE PROPERTY OF L-COM GLOBAL CONNECTIVITY. ALL RIGHTS RESERVED.</p> <p style="text-align: center;">SHEET 1 OF 1</p> <p style="text-align: center;">SCALE N/A</p>	<table border="1" style="width: 100%; border-collapse: collapse;"> <tr> <td>REV</td> <td style="text-align: center;">A</td> </tr> <tr> <td>ITEM NO.</td> <td style="text-align: center;">LCCA30348</td> </tr> <tr> <td>DRAWN BY</td> <td style="text-align: center;">BPUCHASKI</td> </tr> <tr> <td>CAGE CODE</td> <td style="text-align: center;">43321</td> </tr> <tr> <td>SIZE</td> <td style="text-align: center;">A</td> </tr> </table>	REV	A	ITEM NO.	LCCA30348	DRAWN BY	BPUCHASKI	CAGE CODE	43321	SIZE	A
.X = ± .2	[5.08]	FRACTIONS	± 1/32																																									
.XX = ± .02	[.51]	ANGLES ± 1°																																										
.XXX = ± .005	[.13]	CABLE LENGTH (L) TOLERANCES:																																										
		L ≤ 12 [305]	± 1 [25] / -0																																									
		12 [305] < L ≤ 60 [1524]	± 2 [61] / -0																																									
		60 [1524] < L ≤ 120 [3048]	± 4 [102] / -0																																									
		120 [3048] < L ≤ 300 [7620]	± 6 [152] / -0																																									
		300 [7620] < L = ∞	± 9% L / -0																																									
REV	A																																											
ITEM NO.	LCCA30348																																											
DRAWN BY	BPUCHASKI																																											
CAGE CODE	43321																																											
SIZE	A																																											

**NOTES:**

- CABLES 36" AND UNDER HAVE 1 LABEL CENTERED. CABLES OVER 36" HAVE 2 LABELS, ONE AT EACH END 6.0" FROM THE FRONT OF THE CONNECTOR.

THESE COMMODITIES, TECHNOLOGY OR SOFTWARE WERE EXPORTED FROM THE UNITED STATES IN ACCORDANCE WITH THE EXPORT ADMINISTRATION REGULATIONS. DIVERSION CONTRARY TO U.S. LAW PROHIBITED.

T-Rev D