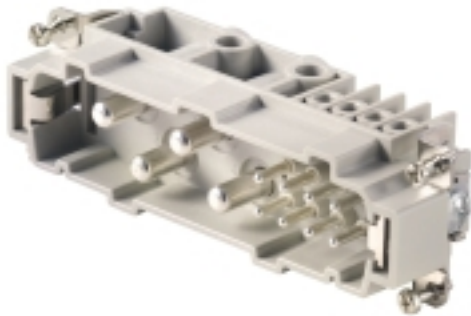


**HDC insert  
HDC S4/8 MS**

**Weidmüller Interface GmbH & Co. KG**  
Klingenbergstraße 26  
D-32758 Detmold  
Germany  
Fon: +49 5231 14-0  
Fax: +49 5231 14-292083  
www.weidmueller.com



The MixMate series of connectors can simultaneously transmit high rated currents and voltages as well as signals.

The wire connection level is designed for screw connections.

Screw connection.

**General ordering data**

|            |  |
|------------|--|
| Type       | HDC S4/8 MS  |
| Order No.  | <a href="#">1023260000</a>   |
| Version    | HDC insert, Pin, 400 V, 80 A, Number of poles: 12, Screw connection, Size: 8 |
| GTIN (EAN) | 4032248750115  |
| Qty.       | 1 pc(s).   |

Creation date September 7, 2020 10:37:04 AM CEST

Catalogue status 05.09.2020 / We reserve the right to make technical changes.

**HDC insert  
HDC S4/8 MS**

**Weidmüller Interface GmbH & Co. KG**  
 Klingenbergstraße 26  
 D-32758 Detmold  
 Germany  
 Fon: +49 5231 14-0  
 Fax: +49 5231 14-292083  
 www.weidmueller.com

**Technical data****Dimensions and weights**

|            |        |                 |            |
|------------|--------|-----------------|------------|
| Width      | 34 mm  | Width (inches)  | 1.339 inch |
| Height     | 42 mm  | Height (inches) | 1.654 inch |
| Depth      | 111 mm | Depth (inches)  | 4.37 inch  |
| Net weight | 141 g  |                 |            |

**Temperatures**

|                   |                   |
|-------------------|-------------------|
| Limit temperature | -40 °C ... 125 °C |
|-------------------|-------------------|

**Environmental Product Compliance**

|            |  |
|------------|--|
| REACH SVHC | Lead 7439-92-1,<br>Potassium perfluorobutane<br>sulfonate 29420-49-3 |
|------------|--|

**Dimensions**

|                |       |                   |        |
|----------------|-------|-------------------|--------|
| Height of plug | 42 mm | Total length base | 111 mm |
|----------------|-------|-------------------|--------|

**General data**

|                                      |  |                              |                   |
|--------------------------------------|--|------------------------------|-------------------|
| Insulating material                  | PC glass-fibre reinforced<br>(UL-listed and railway-<br>certified) | Insulating material group    | IIIa              |
| Insulation strength                  | 10 <sup>10</sup> Ω   | Material                     | Copper alloy      |
| Number of poles                      | 12   | Number of power contacts     | 4                 |
| Number of signal contacts            | 8  | Plugging cycles, silver      | ≥ 500             |
| Pollution severity                   | 3  | Rated current (DIN EN 61984) | 80 A              |
| Rated impulse voltage (DIN EN 61984) | 6 kV   | Rated voltage (DIN EN 61984) | 400 V             |
| Rated voltage according to UL/CSA    | 600 V AC/DC  | Series                       | MixMate           |
| Size                                 | 8  | Surface finish               | Silver passivated |
| Type                                 | Pin  | UL 94 flammability rating    | V-0               |
| Volume resistance                    | ≤ 1 mΩ   |                              |                   |

**Connection data PE**

|   |                     |   |                     |
|---|---------------------|---|---------------------|
| Blade size, crosshead   | Gr. PH2             | Blade size, slotted (PE connection)   | SD 1.2 x 6.5        |
| Connection type PE  | Screw connection    | Fixing screw  | M 5                 |
| Rated cross-section   | 16 mm <sup>2</sup>  | Stripping length PE connection  | 13 mm               |
| Tightening torque, max. PE connection   | 2.5 Nm              | Tightening torque, min. PE connection   | 2 Nm                |
| Wire connection cross section, finely<br>stranded, max.                                       | 16 mm <sup>2</sup>  | Wire connection cross-section, finely<br>stranded with wire-end ferrules DIN<br>46228/4, max. | 16 mm <sup>2</sup>  |
| Wire connection cross-section, finely<br>stranded with wire-end ferrules DIN<br>46228/4, min. | 0.5 mm <sup>2</sup> | Wire connection cross-section, finely<br>stranded, min.                                       | 0.5 mm <sup>2</sup> |
| Wire cross section, AWG (PE), max.  | AWG 6               | Wire cross section, AWG (PE), min.  | AWG 20              |
| Wire cross-section, solid, max.   | 16 mm <sup>2</sup>  | Wire cross-section, solid, min.   | 0.5 mm <sup>2</sup> |

**HDC insert  
HDC S4/8 MS**

**Weidmüller Interface GmbH & Co. KG**  
 Klingenbergstraße 26  
 D-32758 Detmold  
 Germany  
 Fon: +49 5231 14-0  
 Fax: +49 5231 14-292083  
 www.weidmueller.com

**Technical data****Power contact**

|   |                    |   |                     |
|---|--------------------|---|---------------------|
| Clamping range, power contact, max.                 | 16 mm <sup>2</sup> | Clamping range, power contact, min.         | 1.5 mm <sup>2</sup> |
| Number of poles, performance contact                | 4                  | Rated current (DIN EN 61984), power contact | 80 A                |
| Rated impulse voltage (DIN EN 61984), power contact | 6 kV               | Rated voltage (DIN EN 61984), power contact | 400 V               |
| Stripping length, performance contact               | 15 mm              | Type of connection, power contact           | Screw connection    |

**Signal contact**

|  |                     |  |                     |
|--|---------------------|--|---------------------|
| AF size                                      | SD 0.6 x 3.5        | Clamping range, signal contact, max.         | 2.5 mm <sup>2</sup> |
| Clamping range, signal contact, min.         | 0.5 mm <sup>2</sup> | Number of poles, signal                      | 8                   |
| Rated current (DIN EN 61984), signal         | 16 A                | Rated impulse voltage (DIN EN 61984), signal | 6 kV                |
| Rated voltage (DIN EN 61984), signal contact | 400 V               | Stripping length, signal                     | 8 mm                |
| Type of connection, signal                   | Screw connection    |  |                     |

**Version**

|   |                     |   |                     |
|---|---------------------|---|---------------------|
| Blade size, slotted (screw connection)  | SD 0.8 x 4.0        | Clamping screw  | M 6                 |
| Conductor cross-section, max.   | 16 mm <sup>2</sup>  | Conductor cross-section, min.   | 1.5 mm <sup>2</sup> |
| Material  | Copper alloy        | Size  | 8                   |
| Stripping length, rated connection  | 15 mm               | Surface finish  | Silver passivated   |
| Type of connection  | Screw connection    | Volume resistance   | ≤ 1 mΩ              |
| Wire connection cross section AWG, max.   | AWG 6               | Wire connection cross section AWG, min.   | AWG 16              |
| Wire connection cross section, finely stranded, max.                                    | 16 mm <sup>2</sup>  | Wire connection cross-section, finely stranded with wire-end ferrules DIN 46228/4, max. | 16 mm <sup>2</sup>  |
| Wire connection cross-section, finely stranded with wire-end ferrules DIN 46228/4, min. | 0.5 mm <sup>2</sup> | Wire connection cross-section, finely stranded, min.                                    | 0.5 mm <sup>2</sup> |
| Wire cross-section, solid, max.   | 16 mm <sup>2</sup>  | Wire cross-section, solid, min.   | 0.5 mm <sup>2</sup> |

**Classifications**

|             |             |            |             |
|-------------|-------------|------------|-------------|
| ETIM 6.0    | EC000438    | ETIM 7.0   | EC000438    |
| eClass 9.0  | 27-44-02-05 | eClass 9.1 | 27-44-02-05 |
| eClass 10.0 | 27-44-02-05 | UNSPSC     | 30-21-18-01 |

**Approvals**

Approvals



ROHS

Conform

**Downloads**

|                    |   |
|--------------------|---|
| Brochure/Catalogue | <a href="#">CAT 3 HDC 17/18 EN</a><br><a href="#">FL FIELDWIRING EN</a> |
| Engineering Data   | <a href="#">EPLAN, WSCAD</a>  |
| Engineering Data   | <a href="#">STEP</a>  |

Creation date September 7, 2020 10:37:04 AM CEST

Catalogue status 05.09.2020 / We reserve the right to make technical changes.

**HDC insert  
HDC S4/8 MS**

**Weidmüller Interface GmbH & Co. KG**  
Klingenbergstraße 26  
D-32758 Detmold  
Germany  
Fon: +49 5231 14-0  
Fax: +49 5231 14-292083  
www.weidmueller.com

**Drawings**