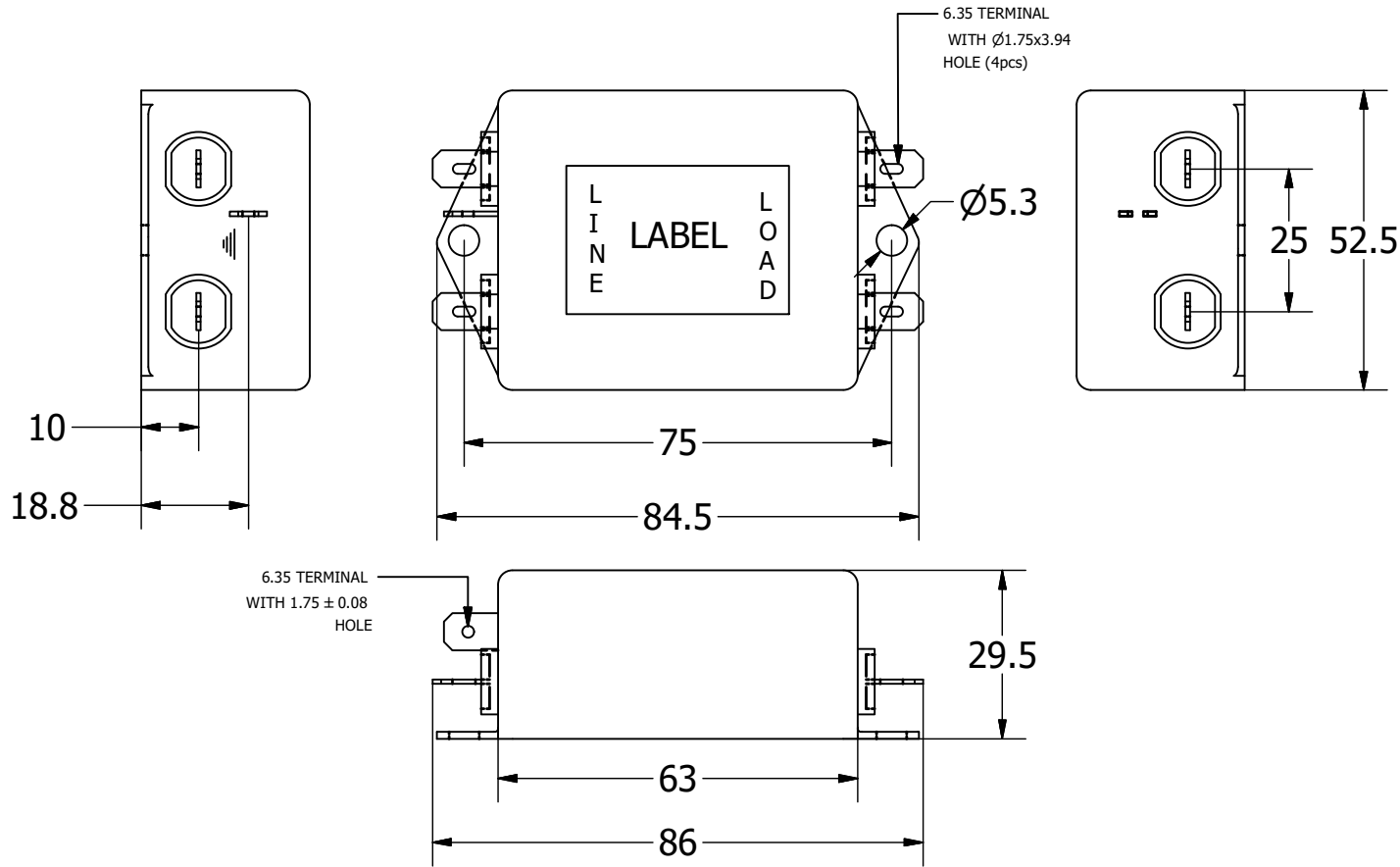


This DWG. is an sole property of ARROW POWER COMPONENTS PVT. LTD. unauthorised use of this DWG. or making product as per DWG. without our permission or any misuse is not permitted.

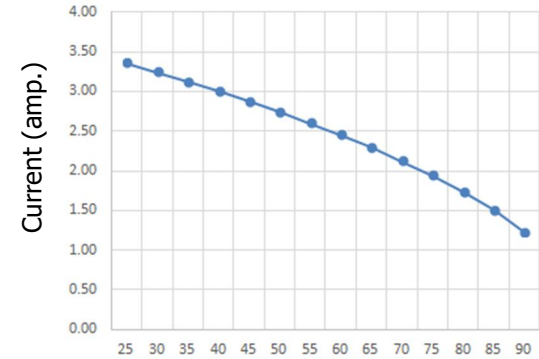
Mechanical Details



NOTES: UNLESS OTHERWISE SPECIFIED

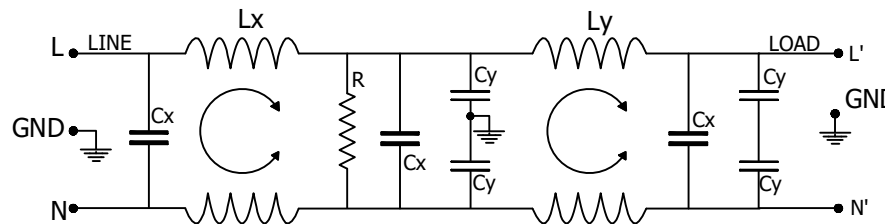
1	TOLERANCE TO BE ± 1.0 mm.
2	ALL DIMENSIONS ARE IN MM
3	

Derating curve



Temperature °C

Electrical Schematic



SPECIFICATION

- 1) RATED VOLTAGE (MAX):
1 AMP, 120/250 VAC 50-60HZ;
- 2) Hi-pot RATING (ONE MINUTE):
LINE TO GROUND: 3000 VDC
LINE TO LINE : 1100 VDC
- 3) MAXIMUM LEAKAGE LINE TO GROUND:
0.29mA @120 VAC 60 Hz;
0.50mA @250 VAC 50 Hz;
- 4) CLIMATE CLASS: 25/100/21
TEMPRATURE RANGE: -25°C to +100°C
OVERLOAD CURRENT: 1.5x Rated ct. for 1 min.

50 ohm - 50 ohm Typical Insertion Loss

FREQUENCY MHZ	0.01	0.1	0.5	1.0	2.0	5.0	10
COMMON DB	27	48	55	54	53	70	65
DIFFERENTIAL DB	5	42	90	84	74	79	49

PRODUCT LABEL

EMC EMV
FILTER
EN2090-3-F
120/250 VAC, 50/60 Hz
3A@40°C
25/100/21
UL US CE

A	ISSUE	SUJIT	AJAY	AUG. 2019
REV.	DESCRIPTION	ECN	DWN	APVD.
ARROW POWER COMPONENTS PVT. LTD. A-40, Wazirpur Industrial Area New Delhi, 110052 Email:- aj@emcemv.com				
DRAWN BY	VERIFIED BY	APPROVED BY	CHECKED DATE	
SUJIT	RISHABH	AJAY	09-AUG-2019	
DESC. SINGLE PHASE SINGLE STAGE FILTER				PAGE 1 Of 1
SERIES	PART NO.			
EN2090	EN2090-3-F			

