

EAO – Your Expert Partner for Human Machine Interfaces

704.411.018I - Selector switch illuminated 2 positions short lever round - Actuator

704.411.018I - Selector switch illuminated 2 positions short lever round - Actuator



Attention: The preview is based on a sample product. This can differ from your current configuration.

Attribute

| | |
|----------------------|-----------------------|
| Design | flush |
| Front dimension | Ø 35 mm |
| Front form | round |
| IP front protection | IP65 |
| Mounting cut-out | Ø 30.5 mm |
| Front bezel colour | Nature |
| Front bezel material | Aluminium |
| Front bezel surface | anodised |
| Lever colour | Black |
| Lever illumination | optional illuminative |
| Lever material | plastic |
| Lever shape | short |
| Rotary positions | 2 |
| Switching action | Rest - Maintained |
| Switching angle | 90° right |
| Weight | 0.056 kg |

Schaltelement

| | |
|-----------------------------------|---|
| max. number of switching elements | 3 |
|-----------------------------------|---|

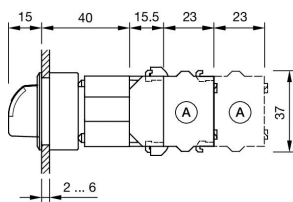
Function

Selector switch

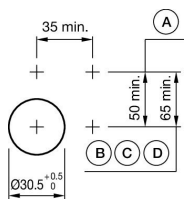
EAO – Your Expert Partner for Human Machine Interfaces

704.411.018I - Selector switch illuminated 2 positions short lever round - Actuator

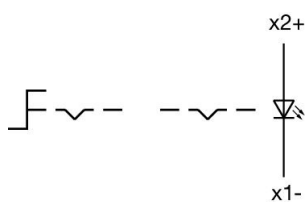
Dimensions



Mounting cut-outs



Wiring diagrams



Additional information

Max. 3 switching elements can be clipped on
The colour of anodised aluminium parts can vary due to technical
production reasons
Max. 3 switching elements can be clipped on