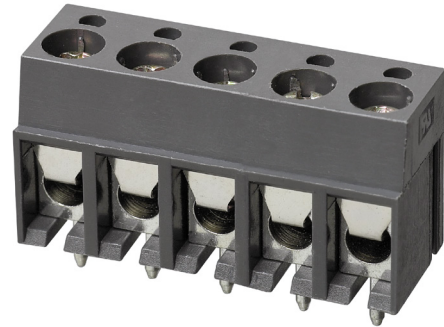


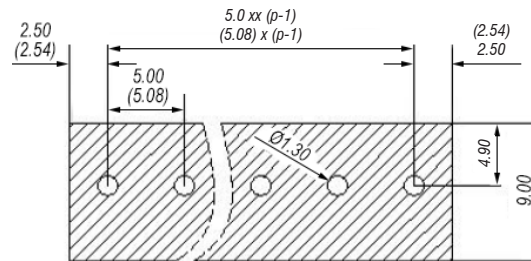
Terminal Block Standard Vertical 20.101M/xx (21.101M/xx)

- Modular
- 300V 16A UL
- UL94V-0
- PA66
- 5.0mm (5.08mm) Pin Pitch
- RoHS Compliant
- xx = Number of Poles (available from 2~24 poles)

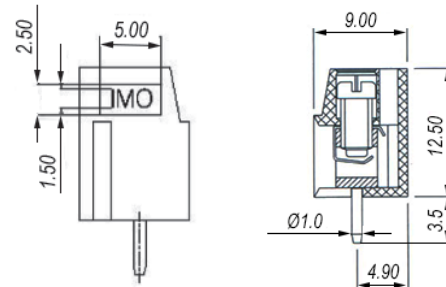
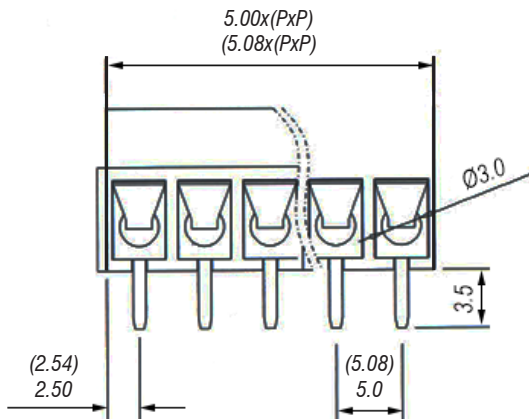
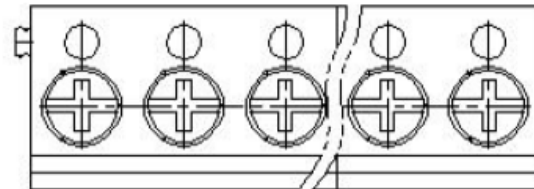


Technical Data

Pitch	5.0mm (5.08mm)
UL Rating	300V 16Amps
IEC Rating	250V 24Amps
Solder Pin	Brass, Tin Plated
Wire Range	22-14AWG (2.5mm ²)
PCB Hole Diameter	1.3mm
Screw	M3 Steel, Zinc Plated
Screw Torque	0.5Nm
Insulation Voltage	AC2000V / 1 Min
Contact Resistance	20mΩ
Insulation Resistance	500mΩ / DC500V
Temperature Range	-40 to +105°C
Max Soldering	+250°C for 5 sec



PCB Layout



Supplied in black as standard
Other colour options and printing may be available depending on quantity
Please contact IMO for further information