

KNS Series Datasheet

Power Shunt Resistors | Radial and Axial Version
Low Inductance and Low Ohmic | Open Frame

ORDERING CODE - Example

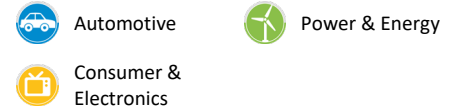
New SAP Part Nr.:

KNS	250	J	B	-	RP-	R039	AA
Serie	Power rating	Tol.	Pack-Code	TCR	Forming type	R Value	Special
		F = ±1% G = ±2% H = ±3% J = ±5%	B = Bulk	- Base on spec.	AX- Axial Version RP- Radial Version (10[mm] RM) RL- Radial Version (15[mm] RM) RC- Radial Version (20[mm] RM)		AA = Standard

Historical VTM Part Nr.:

KN352 - 009	5	B	OR039
Type	Tol.	Pack-Code	R Value
KN352 - 0	5	B	OR068
Type	Tol.	Pack-Code	R Value

APPLICATIONS



FEATURES

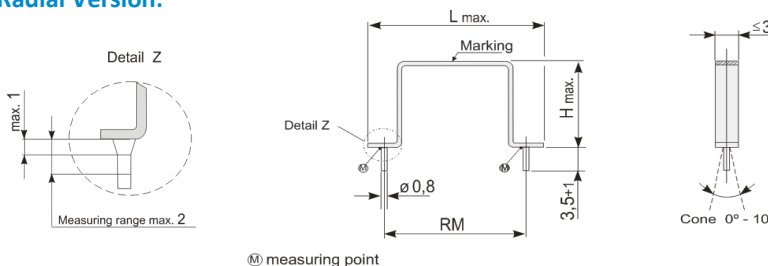
All welded construction
Very low inductance
Open frame design
Solderable terminals
RoHS & REACH Compliant
AEC - Q200 Qualified

ELECTRICAL SPECIFICATIONS

Type		KNS100	KNS150	KNS200	KNS250	KNS300
Historical Part Number	RADIAL	KN350 - 009	KN351 - 010	KN351 - 009	KN352 - 009 KN352 - 010 KN352 - 011	KN353 - 009 KN353 - 010 KN353 - 011
	AXIAL	KN350 - 0	-----	KN351 - 0	KN352 - 0	-----
Nominal Power Rating P ₇₀		1,0	1,5	2,0	2,5	3,0
Resistance Range (Other values upon request)	[Ω]	Min.	OR003	OR003	OR003	OR005
		Max.	OR051	OR068	OR068	OR12
E-Series (preferred)		E24 >OR01 (Other upon request)				
Tolerances	±[%]	F = 1% ; G = 2% ; H = 3% ; J = 5%				
Temperature Coefficient	±[10 ⁻⁶ K ⁻¹]	+200 ... +1200 (Depends on value)				
Working Temperature Range	[°C]	-55 ... +300				
Thermal Resistance	[KW ⁻¹]	230	115	153	92	77
Max. Working Voltage	[V] _{RMS}	$\sqrt{P_{70} \times R}$				
Dielectric Withstanding Voltage IEC115-1 clause 4.7 (1[min])	[V] _{RMS}	Non insulated				

DIMENSIONS [mm]

Radial Version:

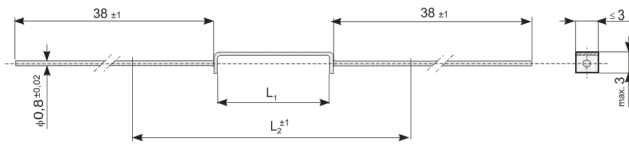


Construction: The resistive elements consist of a flat metal-band. Spot welded Cu-terminals ensure high stability of Contacts. Thus, this construction results in a non-inductive resistor of both high stability and overload capacity.

Type	[Forming Type]	Historical P/N:	H max.	L max.	RM
KNS100	[RP]	KN350-009	6,5	16	10
KNS150	[RL]	KN351-010	8,0	21	15
KNS200	[RP]	KN351-009	10,5	16	10
KNS250	[RP]	KN352-009	17,0	16	10
	[RL]	KN352-010	14,5	21	15
	[RC]	KN352-011	12,0	26	20
KNS300	[RP]	KN353-009	20,0	16	10
	[RL]	KN353-010	18,0	21	15
	[RC]	KN353-011	15,0	26	20

KNS Series Datasheet

Axial Version:



Type	[Forming Type]	Historical P/N:	L ₁	L ₂
KNS100	[AX]	KN350 - 0	12,0 ... 14,5	40
KNS200		KN351 - 0	17,5 ... 21,5	45
KNS250		KN352 - 0	29,0 ... 34,0	60

Measuring length L₂: Resistance value is measured over the centered length L₂ on terminals free of oxide and contaminations. Differing conditions require adequate corrections ($R_{\text{terminal}} = 0,4 \text{ [m}\Omega/\text{cm]}$).

PERFORMANCE DATA

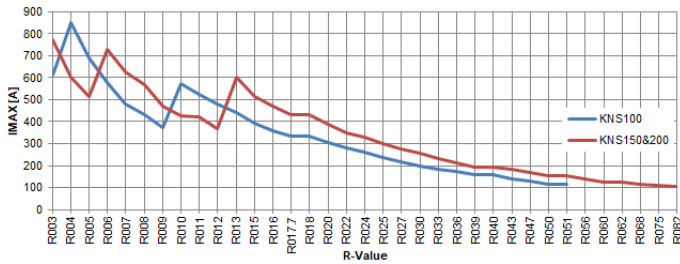
Type		KNS100	KNS150	KNS200	KNS250	KNS300
Historical Part Number	RADIAL	KN350 – 009	KN351 – 010	KN351 – 009	KN352 – 009 KN352 – 010 KN352 – 011	KN353 – 009 KN353 – 010 KN353 – 011
	AXIAL	KN350 – 0	-----	KN351 – 0	KN352 – 0	-----
Derating Linear	[°C]	70...300 (0W)				
Climatic Category		55/200/56				
Failure Rate <i>(Total, θ_{J}, max, 60[%] cont. lev.)</i>	[10 ⁻⁹ h ⁻¹]	appr. 100 depends on value				
Endurance <i>IEC60115-1 clause 4.25 (P_{70} @ 70[°C], 1000[h])</i>	±[%]	3,0				
Resistance to Soldering Heat <i>IEC60115-1 clause 4.18 (260^{±5}[°C], 3,5^{±1}[s])</i>	±[%]	0,25				
Damp Heat, Steady State <i>IEC60115-1 clause 4.24 ; IEC60068-2-78 (40[°C], 93[% r.h.], 56[d])</i>	±[%]	0,5	1,5		0,5	1,5
Rapid change of temperature <i>IEC60115-1 clause 4.19 and IEC60068-2-14 (30 [min] -55 [°C] and 30 [min] +125 [°C])</i>	±[%]	2,0	1,0		2,0	1,0
Biased Humidity <i>MIL-STD-202 Method 103 (85[°C], 85[%RH] 1.000[h])</i>	±[%]	1,0	2,5		1,0	2,5
Vibrations <i>Mil-STD-202 Method 204 (10 to 2000 [Hz], 5 [G] for 20 [min], 12 cycles, each of 3 orientation)</i>	±[%]	4,5	9,0		4,5	9,0
Mechanical Shock <i>Mil-STD-202 Method 213 (Method C, peak value 100 [G], Half sine)</i>	±[%]	2,0	3,0		2,0	3,0
ESD <i>IEC60115-1 Clause 4.38, AEC-Q200-002 Direct contact, 2discharges, Cs = 150 [pF], Rd = 2000 [Ω], V = 2[KV] (time/sec)</i>	±[%]	2,0	1,5		2,0	1,5
Terminal Strength	±[%]	0,5				
Terminal Tensile Strength	[N]	≥ 25				
Solderability <i>IEC60068-2-20 (245^{±5}[°C] 3^{±0,5}[s])</i>		Solder bath method (> 95% coverage)				
Marking <i>IEC60062</i>		Value imprinted				

KNS Series Datasheet

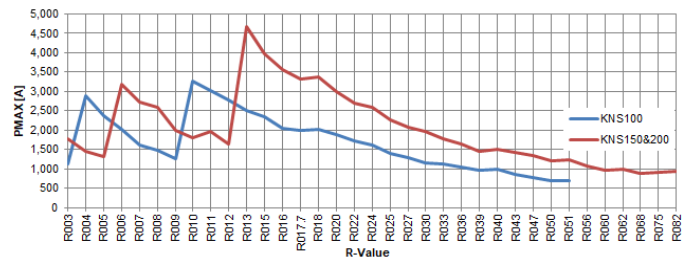
PULSE PERFORMANCE

The graphs below show the capability of electrical pulse for each KNS series, based on the construction for each type and Ohmic value, for a pulse time equal to 50[ms].

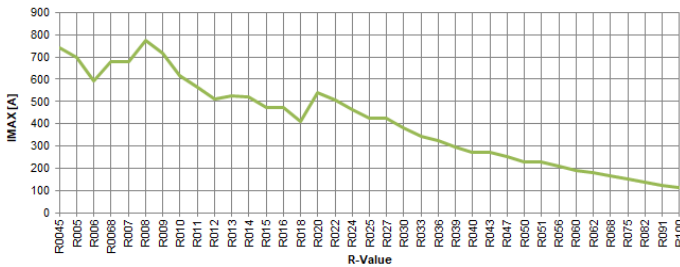
Maximum Pulse current graph KNS100 KNS150&200



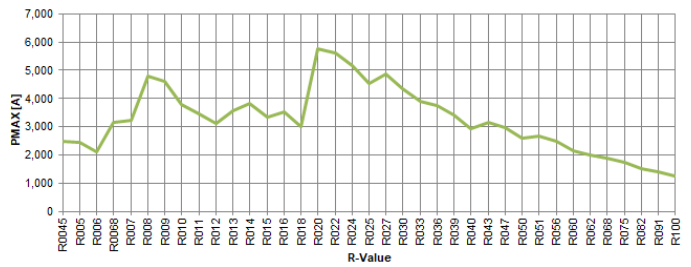
Maximum Pulse Power graph KNS100 KNS150&200



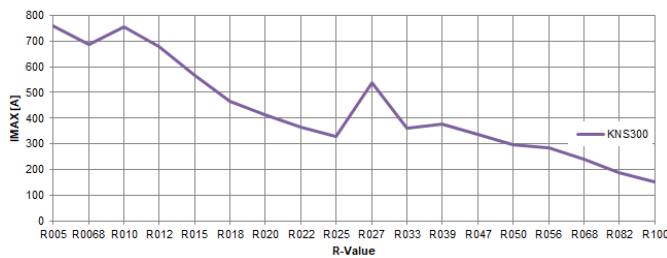
Maximum Pulse current graph KNS250



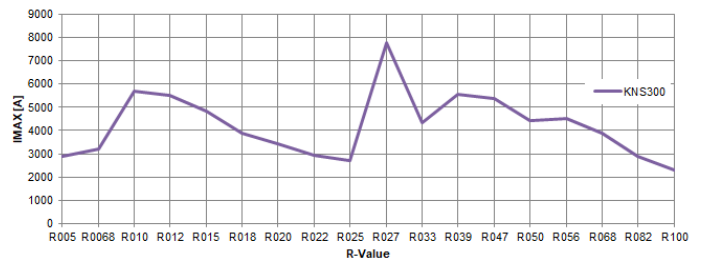
Maximum Pulse power graph KNS250



Maximum Pulse current graph KN300



Maximum Pulse power graph KN300



KNS Series Datasheet

PACKAGING

The standard packaging for KNS in radial and axial type is Bulk, dimensions below.

Radial Version:



Type	Historical P/N:	Pack Code	Pieces	* Forming Type	Special
KNS100	KN350 – 009	B = Bulk	100	RP-	AA = Standard
KNS200	KN351 – 009		1000	RP-	
KNS150	KN351 – 010		1000	RL-	
KNS250	KN352 – 009		500	RP-	
	KN352 – 010		500	RL-	
	KN352 – 011		500	RC-	
KNS300	KN353 – 009		500	RP-	
	KN353 – 010		500	RL-	
	KN353 – 011		500	RC-	

* RP- Radial (1 Pin 10[mm] RM) ; RL- Radial (1 Pin 15[mm] RM) ; RC- Radial (1 Pin 20[mm] RM)

Axial Version:



Type	Historical P/N:	Pack Code	Pieces	Forming Type	Special
KNS100	KN350 – 0	B = Bulk	500	AX- = Axial	S0 = Special
KNS200	KN351 – 0		500		
KNS300	KN352 – 0		500		

Ordering Code for Radial:

KNS	250	J	B	-	RP-	0R039	AA
Serie	Power rating	Tol.	Pack-Code	TCR	Forming type	R Value	Special
		F = ±1% G = ±2% H = ±3% J = ±5%	B = Bulk	- Base on spec.	RP- Radial Version (10[mm] RM) or RL- Radial Version (15[mm] RM) or RC- Radial Version (20[mm] RM)		AA = Standard

Ordering Code for Axial:

KNS	250	J	B	-	AX-	0R039	S0
Serie	Power rating	Tol.	Pack-Code	TCR	Forming type	R Value	Special
		F = ±1% G = ±2% H = ±3% J = ±5%	B = Bulk	- Base on spec.	AX- Axial Version		S0 = Special