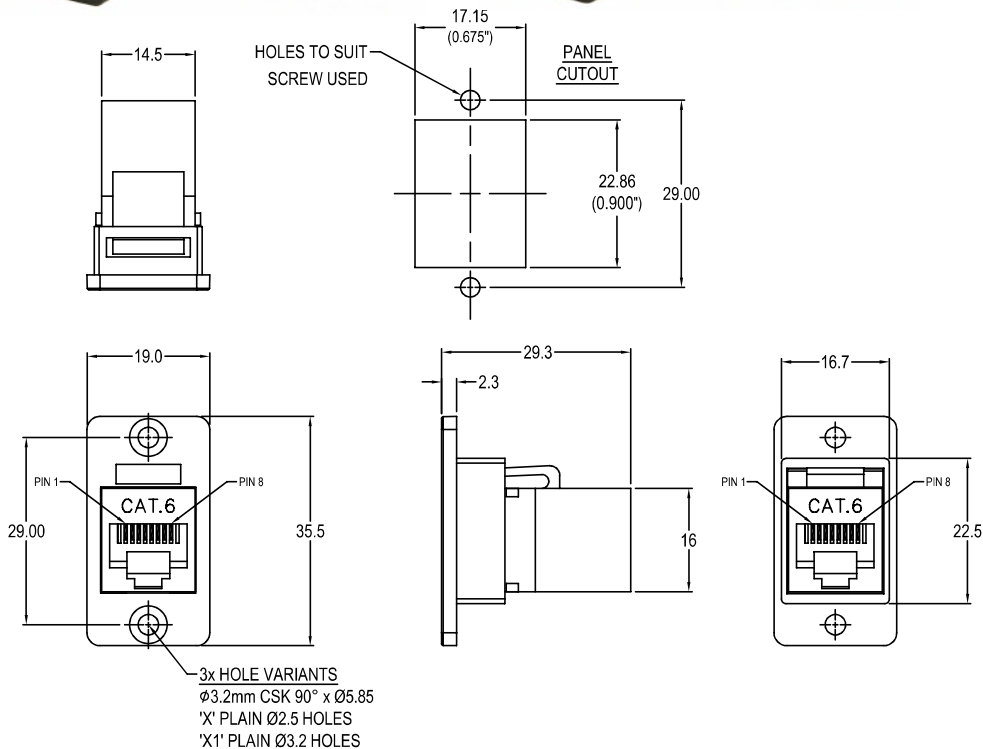


# CLIFF

## SLIM CAT.6 RJ45 FRONT MOUNTING FEEDTHROUGH CONNECTOR



### Part No.

**CP30622**

SLIM FM Cat.6 RJ45 Black plastic frame, CSK holes

**CP30622X**

SLIM FM Cat.6 RJ45 Black plastic frame, Ø2.5 PLAIN holes

**CP30622X1**

SLIM FM Cat.6 RJ45 Black plastic frame, Ø3.2 PLAIN holes

### Feedthrough Features

- Fits standard rectangular cutout.
- Various hole mounting options.
- No soldering or punch termination. Use standard cable for each connector style.
- Low rear profile.

### General:

Please note: Functionality is affected by cable quality, length and cable wiring configuration.

### Material:

- 1.RJ45 In-Line Coupler:  
PC/ABS, UL 94V-0
- 2.RJ45 In-Line Coupler Contact:  
Phosphor Bronze, 3-50 micro inches gold plating over nickel plate.
- 3.PCB: FR4, UL 94V-0
4. Plastic Frame: Polyamide UL94 V-2

### Performance:

- 1.T568A & T568B wiring.
- 2.Meet ISO/IEC 11801 and EN50173
- 3.Meet ANSI/TIA/EIA 568B.2
- 4.Operating temperature: Min -10°C Max +60°C