



HDC | HDC HE

TE Internal #: T2040483201-000

HDC HE, Rectangular Contact Inserts, HE, Socket, Contact Insert Pole Configuration 24, Spring Terminal, 24 Position, 14 – 20AWG Wire Size

[View on TE.com >](#)

Connectors > Rectangular Connectors > Rectangular Contact Inserts



Rectangular Connector Insert Type: **HE**

Contact Type: **Socket**

Contact Insert Pole Configuration: **24**

Termination Method to Wire & Cable: **Spring Terminal**

Number of Positions: **24**

Features

Product Type Features

Product Type	Insert
Rectangular Connector Insert Type	HE
Sealable	No

Configuration Features

Number of Positions	24
---------------------	----

Contact Features

Contact Type	Socket
Contact Insert Pole Configuration	24

Termination Features

Termination Method to Wire & Cable	Spring Terminal
------------------------------------	-----------------

Dimensions

Wire Size	.5 – 2.5 mm ²
-----------	--------------------------

Operation/Application

Circuit Application	Power & Signal
---------------------	----------------

Product Compliance

[For compliance documentation, visit the product page on TE.com>](#)



EU RoHS Directive 2011/65/EU	Compliant with Exemptions
EU ELV Directive 2000/53/EC	Compliant with Exemptions
China RoHS 2 Directive MIIT Order No 32, 2016	Restricted Materials Above Threshold
EU REACH Regulation (EC) No. 1907/2006	Current ECHA Candidate List: JAN 2021 (211) Candidate List Declared Against: JAN 2021 (211) SVHC > Threshold: Pb (3.7% in Pb-Alloy in Copper) Article Safe Usage Statements: Do not eat, drink or smoke when using this product. Wash thoroughly after handling. Recycle if possible and dispose of the article by following all applicable governmental regulations relevant to your geographic location.
Halogen Content	Not Yet Reviewed for halogen content
Solder Process Capability	Not reviewed for solder process capability

Product Compliance Disclaimer

This information is provided based on reasonable inquiry of our suppliers and represents our current actual knowledge based on the information they provided. This information is subject to change. The part numbers that TE has identified as EU RoHS compliant have a maximum concentration of 0.1% by weight in homogenous materials for lead, hexavalent chromium, mercury, PBB, PBDE, DBP, BBP, DEHP, DIBP, and 0.01% for cadmium, or qualify for an exemption to these limits as defined in the Annexes of Directive 2011/65/EU (RoHS2). Finished electrical and electronic equipment products will be CE marked as required by Directive 2011/65/EU. Components may not be CE marked. Additionally, the part numbers that TE has identified as EU ELV compliant have a maximum concentration of 0.1% by weight in homogenous materials for lead, hexavalent chromium, and mercury, and 0.01% for cadmium, or qualify for an exemption to these limits as defined in the Annexes of Directive 2000/53/EC (ELV). Regarding the REACH Regulation, the information TE provides on SVHC in articles for this part number is based on the latest European Chemicals Agency (ECHA) 'Guidance on requirements for substances in articles' posted at this URL: <https://echa.europa.eu/guidance-documents/guidance-on-reach>

Compatible Parts



Also in the Series | **HDC HE**



Connector Contacts(32)



Rectangular Contact Inserts(135)

Customers Also Bought



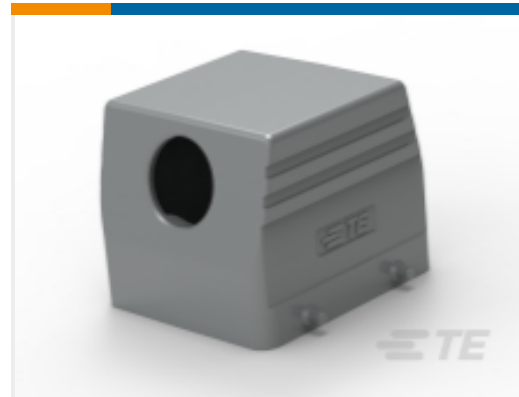
TE Part #T1470102125-000
H10B-SGRH-M25



TE Part #T4151420004-007
M12 A-CODE FEMALE R/A SINGLE
ENDED CABL



TE Part #T1500482000-000
H48B-AG-LB



TE Part #T1210320129-000
H32B-TS-PG29



TE Part #T1210240121-000
H24B-TS-PG21



TE Part #T1410242000-000
H24B-AG



TE Part #T1310480129-000
H48B-TS-RO-PG29



TE Part #T1320480132-000
H48B-TG-RO-M32



TE Part #T1619030111-000
H3A-MAGSV-PG11



TE Part #T1009101120-000
H10A-KDBM

Documents

Product Drawings

[HE-024-FS 25-48](#)

English

CAD Files

[3D PDF](#)

3D

Customer View Model

[ENG_CVM_CVM_T2040483201-000_B.2d_dxf.zip](#)



English

Customer View Model

[ENG_CVM_CVM_T2040483201-000_B.3d_igs.zip](#)

English

Customer View Model

[ENG_CVM_CVM_T2040483201-000_B.3d_stp.zip](#)

English

By downloading the CAD file I accept and agree to the [Terms and Conditions](#) of use.

Datasheets & Catalog Pages

Heavy Duty Connectors

English

[HEAVY DUTY CONNECTORS](#)

English

Product Specifications

Application Specification

English

[Application Specification](#)

Agency Approvals

Agency Approval Document

English