



HDC | HDC HE

TE Internal #: T2040323101-000

HDC HE, Rectangular Contact Inserts, HE, Pin, Contact Insert Pole Configuration 16, Spring Terminal, 16 Position, 14 – 20AWG Wire Size

[View on TE.com >](#)

Connectors > Rectangular Connectors > Rectangular Contact Inserts



Rectangular Connector Insert Type: **HE**

Contact Type: **Pin**

Contact Insert Pole Configuration: **16**

Termination Method to Wire & Cable: **Spring Terminal**

Number of Positions: **16**

**Features**

**Product Type Features**

Product Type	Insert
Rectangular Connector Insert Type	HE
Sealable	No

**Configuration Features**

Number of Positions	16
---------------------	----

**Contact Features**

Contact Type	Pin
Contact Insert Pole Configuration	16

**Termination Features**

Termination Method to Wire & Cable	Spring Terminal
------------------------------------	-----------------

**Dimensions**

Wire Size	.5 – 2.5 mm <sup>2</sup>
-----------	--------------------------

**Operation/Application**

Circuit Application	Power & Signal
---------------------	----------------

**Product Compliance**

[For compliance documentation, visit the product page on TE.com>](#)

EU RoHS Directive 2011/65/EU	Compliant with Exemptions
EU ELV Directive 2000/53/EC	Compliant with Exemptions
China RoHS 2 Directive MIIT Order No 32, 2016	Restricted Materials Above Threshold
EU REACH Regulation (EC) No. 1907/2006	<p>Current ECHA Candidate List: JAN 2021 (211)</p> <p>Candidate List Declared Against: JAN 2021 (211)</p> <p>SVHC &gt; Threshold:</p> <p>Pb (3.7% in Pb-Alloy in Copper)</p> <p><b>Article Safe Usage Statements:</b> Do not eat, drink or smoke when using this product. Wash thoroughly after handling. Recycle if possible and dispose of the article by following all applicable governmental regulations relevant to your geographic location.</p>
Halogen Content	Not Low Halogen - contains Br or Cl > 900 ppm.
Solder Process Capability	Not reviewed for solder process capability

#### Product Compliance Disclaimer

This information is provided based on reasonable inquiry of our suppliers and represents our current actual knowledge based on the information they provided. This information is subject to change. The part numbers that TE has identified as EU RoHS compliant have a maximum concentration of 0.1% by weight in homogenous materials for lead, hexavalent chromium, mercury, PBB, PBDE, DBP, BBP, DEHP, DIBP, and 0.01% for cadmium, or qualify for an exemption to these limits as defined in the Annexes of Directive 2011/65/EU (RoHS2). Finished electrical and electronic equipment products will be CE marked as required by Directive 2011/65/EU. Components may not be CE marked. Additionally, the part numbers that TE has identified as EU ELV compliant have a maximum concentration of 0.1% by weight in homogenous materials for lead, hexavalent chromium, and mercury, and 0.01% for cadmium, or qualify for an exemption to these limits as defined in the Annexes of Directive 2000/53/EC (ELV). Regarding the REACH Regulation, the information TE provides on SVHC in articles for this part number is based on the latest European Chemicals Agency (ECHA) 'Guidance on requirements for substances in articles' posted at this URL: <https://echa.europa.eu/guidance-documents/guidance-on-reach>

## Compatible Parts

 <p>TE Part # T2040323201-000 HE-016-FS 17-32</p>	 <p>TE Part # T1210320140-000 H32B-TS-M40</p>	 <p>TE Part # T3609400102-000 DLX-40-M</p>
--	--	---

## Also in the Series | HDC HE



Connector Contacts(32)



Rectangular Contact Inserts(135)

## Customers Also Bought



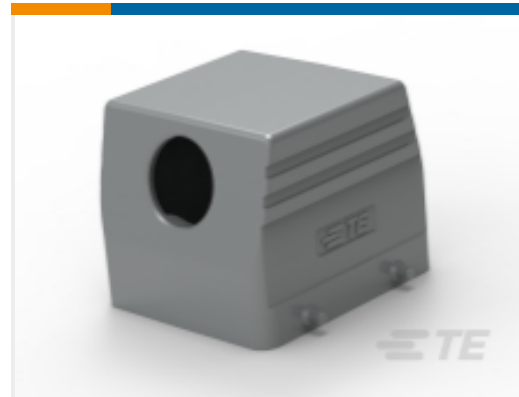
TE Part #T1010101200-000  
H10B-KDTP



TE Part #T1319160121-000  
H16A-TS-PG21



TE Part #T1320240121-000  
H24B-TG-RO-PG21



TE Part #T1210320129-000  
H32B-TS-PG29



TE Part #T1210160121-000  
H16B-TS-PG21



TE Part #T1230240129-000  
H24B-TSH-PG29



TE Part #T1310320129-000  
H32B-TS-RO-PG29



TE Part #T1319320129-000  
H32A-TS-PG29



TE Part #T1320480132-000  
H48B-TG-RO-M32



TE Part #T3910041301-000  
SKT4-13

## Documents

### Product Drawings

[HE-016-MS 17-32](#)

English

### CAD Files

[3D PDF](#)

3D

### Customer View Model

[ENG\\_CVM\\_CVM\\_T2040323101-000\\_B.2d\\_dxf.zip](#)



English

**Customer View Model**

[ENG\\_CVM\\_CVM\\_T2040323101-000\\_B.3d\\_igs.zip](#)

English

**Customer View Model**

[ENG\\_CVM\\_CVM\\_T2040323101-000\\_B.3d\\_stp.zip](#)

English

By downloading the CAD file I accept and agree to the [Terms and Conditions](#) of use.

---

**Datasheets & Catalog Pages**

**Heavy Duty Connectors**

English

[HEAVY DUTY CONNECTORS](#)

English

---

**Product Specifications**

**Application Specification**

English

[Application Specification](#)

---

**Product Environmental Compliance**

**TE Material Declaration**

English

---

**Agency Approvals**

**Agency Approval Document**

English