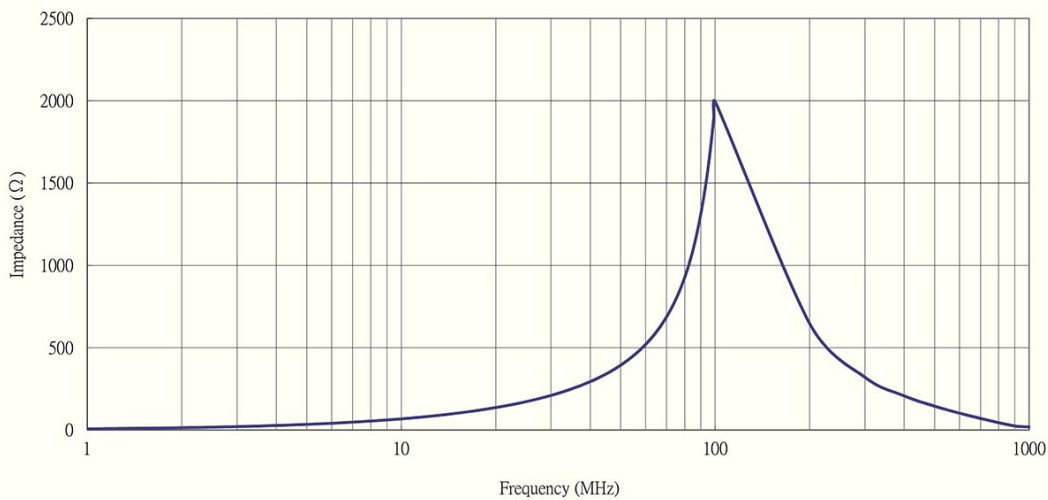


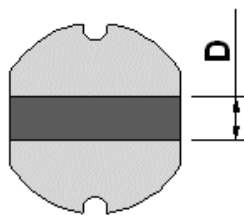
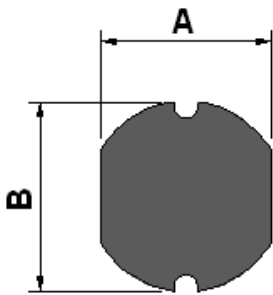
| | |
|------------------------------|--|
| Order Code | TCK-078 |
| Inductance | 1.1 $\mu\text{H} \pm 20\%$ (at 100 kHz / 250 mV) |
| Impedance (DCR) | 15 m Ω max. |
| Rated Current | 3.24 A max. |
| Operating Temperature | -40°C to +125°C |



Impedance Curve



Outline Dimensions



| Dimensions [mm] | |
|-----------------|----------------|
| A | 5.2 ± 0.5 |
| B | 5.8 ± 0.5 |
| C | 4.5 ± 0.55 |
| D | 2.3 typ. |
| E | 5.5 |
| F | 2.15 |
| G | 1.7 |

