

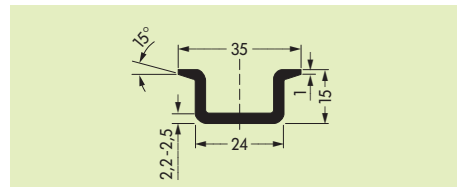
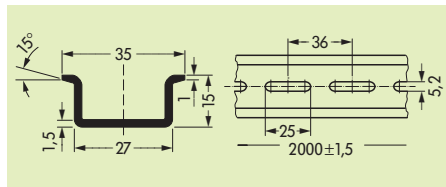
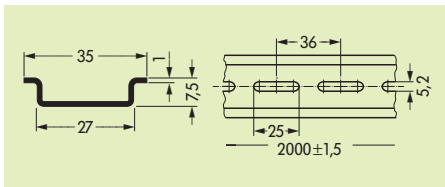
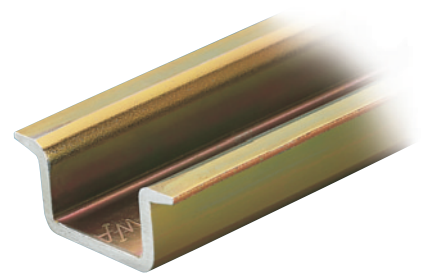
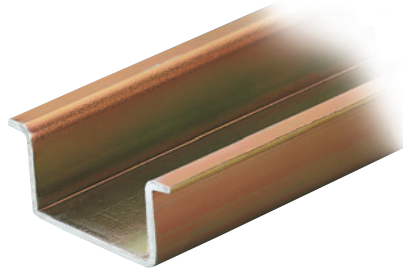
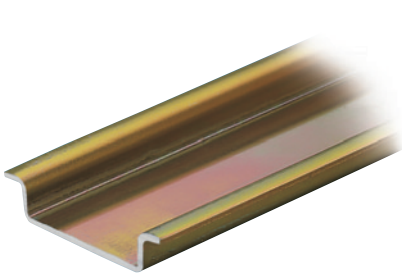
14 Montagezubehör

36

Tragschiene 35 x 7,5 mm, 1 mm dick, entsprechend EN 60715, Stahl verzinkt und gelb chromatiert I_N 76 A (bezogen auf 1 m Länge)

Tragschiene 35 x 15 mm, 1,5 mm dick, ähnlich EN EN 60715, Stahl verzinkt und gelb chromatiert I_N 125 A (bezogen auf 1 m Länge)

Tragschiene 35 x 15 mm, 2,3 mm dick, entsprechend EN EN 60715, Stahl verzinkt und gelb chromatiert I_N 125 A (bezogen auf 1 m Länge)

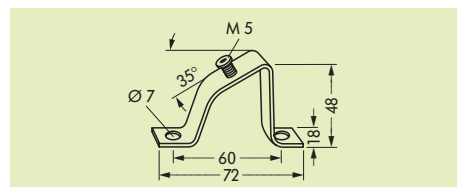
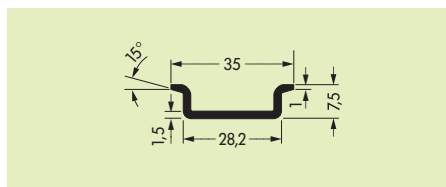
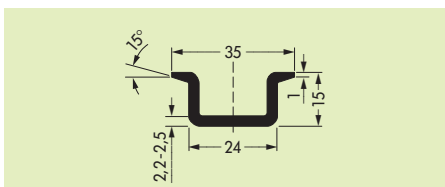
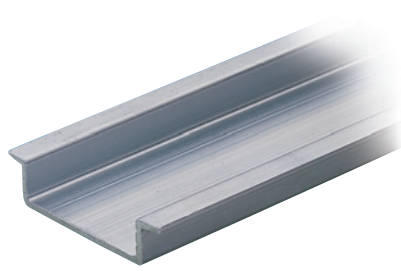


Bestell-Nr.	Stück je Verp.-Einh.	Bestell-Nr.	Stück je Verp.-Einh.	Bestell-Nr.	Stück je Verp.-Einh.
2 m lang		2 m lang		2 m lang	
St-Tragsch. 35 x 7,5 mm, 1 mm dick, ungelocht		St-Tragsch. 35 x 15 mm, 1,5 mm dick, ungelocht		St-Tragsch. 35 x 15 mm, 2,3 mm dick, ungelocht	
210-113	10	210-114	10	210-118	10
St-Tragsch. 35 x 7,5 mm, 1 mm dick, gelocht		St-Tragsch. 35 x 15 mm, 1,5 mm dick, gelocht			
210-112	10	210-197	10		

Tragschiene 35 x 15 mm, 2,3 mm dick, entsprechend EN EN 60715, Kupfer, metallisch blank I_N 309 A (bezogen auf 1 m Länge)

Tragschiene 35 x 7,5 mm, 1,5 mm dick, ähnlich EN EN 60715, Aluminium, metallisch blank I_N 76 A (bezogen auf 1 m Länge)

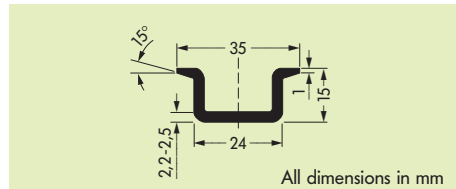
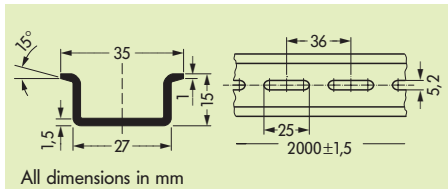
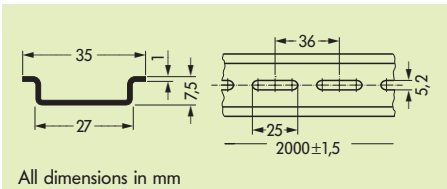
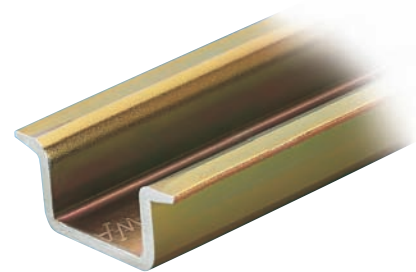
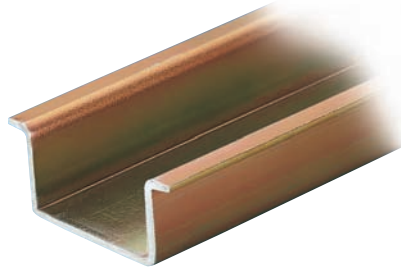
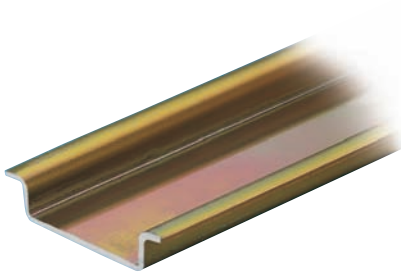
Schrägmontagebügel
Stahl verzinkt und gelb chromatiert



Bestell-Nr.	Stück je Verp.-Einh.	Bestell-Nr.	Stück je Verp.-Einh.	Bestell-Nr.	Stück je Verp.-Einh.
2 m lang		2 m lang			
Cu-Tragsch. 35 x 15 mm, 2,3 mm dick, ungelocht		Alu-Tragsch. 35 x 7,5 mm, 1,5 mm dick, ungelocht		Schrägmontagebügel, ohne Schraube	
210-198	10	210-196	10	210-148	10
				Schraube M 5 x 8	
				210-149	100 (5 x 20)

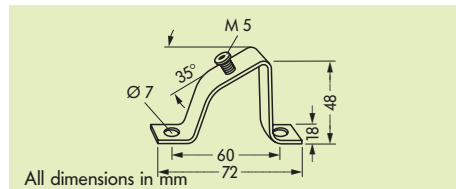
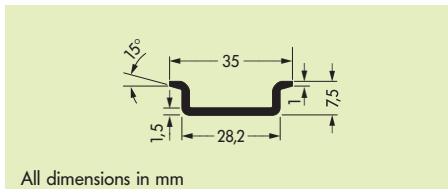
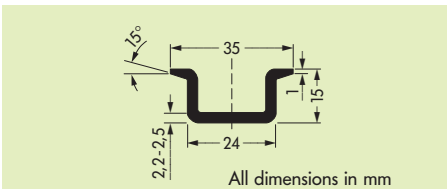
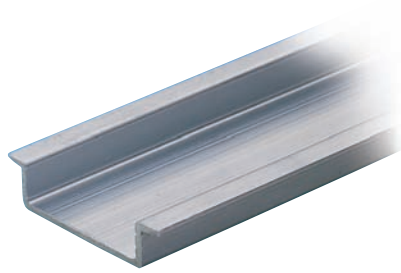
14 Carrier Rails and Mounting Accessories

<p>Carrier rail 35 x 7.5 mm, 1 mm/0.039 in thick, acc. to EN 60715, Steel, zinc-plated and yellow chromated I_N 76 A (referred to a length of 1 m)</p>	<p>Carrier rail 35 x 15 mm, 1.5 mm/0.059 in thick, acc. to EN 60715, Steel, zinc-plated and yellow chromated I_N 125 A (referred to a length of 1 m)</p>	<p>Carrier rail 35 x 15 mm, 2.3 mm/0.091 in thick, acc. to EN 60715, Steel, zinc-plated and yellow chromated I_N 125 A (referred to a length of 1 m)</p>
--	--	--



Item No.	Item No.	Pack.-unit pcs	Item No.	Item No.	Pack.-unit pcs	Item No.	Pack.-unit pcs
1 m / 3'3" long	2 m / 6'6" long		1 m / 3'3" long	2 m / 6'6" long		2 m / 6'6" long	
Steel rail 35 x 7.5 mm, 1 mm/0.039 in th., unslotted	210-229	10	Steel rail 35 x 15 mm, 1.5 mm/0.059 in th., unslotted	210-114	10	Steel rail 35 x 15 mm, 2.3 mm/0.091 in th., unslotted	210-118
Steel rail 35 x 7.5 mm, 1 mm/0.039 in th., slotted	210-162	10	Steel rail 35 x 15 mm, 1.5 mm/0.059 in th., slotted	210-197	10		

<p>Carrier rail 35 x 15 mm, 2.3 mm/0.091 in thick, acc. to EN 60715, Copper, unplated I_N 309 A (referred to a length of 1 m)</p>	<p>Carrier rail 35 x 7.5 mm, 1.5 mm/0.059 in thick, acc. to EN 60715, Aluminum, unplated I_N 76 A (referred to a length of 1 m)</p>	<p>Angled support bracket steel, zinc-plated and yellow chromated</p>
---	---	---



Item No.	Pack.-unit pcs	Item No.	Pack.-unit pcs	Item No.	Pack.-unit pcs
2 m / 6'6" long		2 m / 6'6" long		Angled support bracket, without screw	
Copper carrier rail 35 x 15 mm, 2.3 mm/0.091 in thick, unslotted	210-198	10	Aluminum carrier rail 35 x 7.5 mm, 1.5 mm/0.059 in thick, unslotted	210-148	10
				Screw M 5 x 8	210-149
					100 (5 x 20)

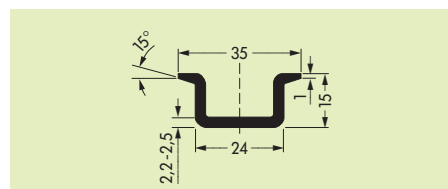
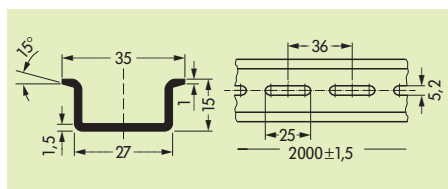
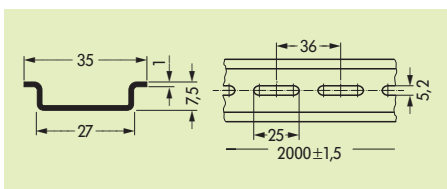
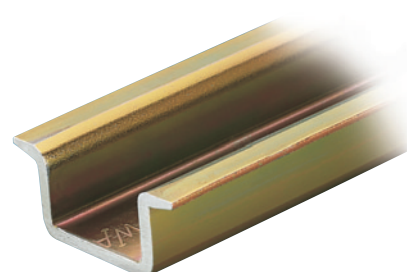
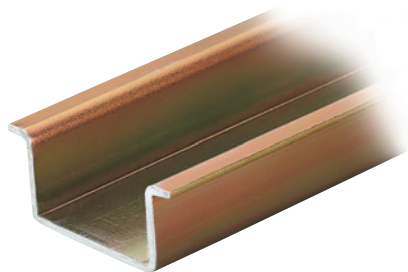
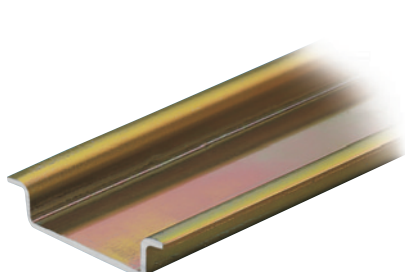
14 Accessoires de montage

36

Rail 35 x 7,5 mm, épaisseur 1 mm, d'après EN 60715, acier galvanisé et chromaté jaune I_N 76 A (se rapporte à une longueur de 1 m)

Rail 35 x 15 mm, épaisseur 1,5 mm, similaire à EN 60715, acier galvanisé et chromaté jaune I_N 125 A (se rapporte à une longueur de 1 m)

Rail 35 x 15 mm, épaisseur 2,3 mm, d'après EN 60715, acier galvanisé et chromaté jaune I_N 125 A (se rapporte à une longueur de 1 m)

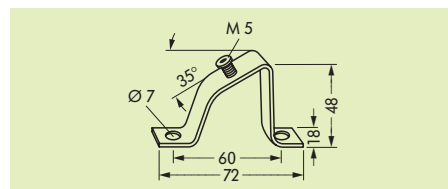
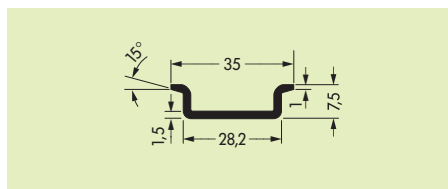
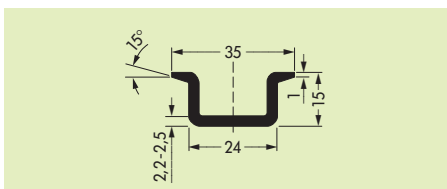
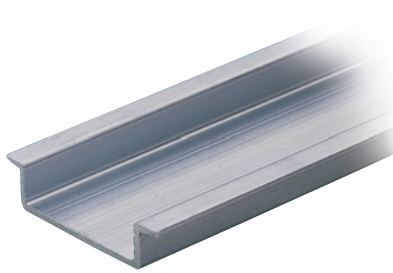


N° de produit	N° de produit	Unité d'emballage	N° de produit	Unité d'emballage	N° de produit	Unité d'emballage
longueur 1 m	longueur 2 m		longueur 2 m		longueur 2 m	
Rail acier 35 x 7,5 mm, ép. 1 mm, non-perforé	Rail acier 35 x 7,5 mm, ép. 1 mm, non-perforé		Rail acier 35 x 15 mm, ép. 1,5 mm, non-perforé		Rail acier 35 x 15 mm, ép. 2,3 mm, non-perforé	
210-229	210-113	10	210-114	10	210-118	10
Rail acier 35 x 7,5 mm, ép. 1 mm, perforé	Rail acier 35 x 7,5 mm, ép. 1 mm, perforé		Rail acier 35 x 15 mm, ép. 1,5 mm, perforé			
210-162	210-112	10	210-197	10		

Rail 35 x 15 mm, épaisseur 2,3 mm, d'après EN 60715, cuivre, nu I_N 309 A (se rapporte à une longueur de 1 m)

Rail 35 x 7,5 mm, épaisseur 1,5 mm, similaire à EN 60715, aluminium, nu I_N 76 A (se rapporte à une longueur de 1 m)

Support incliné acier galvanisé et chromaté jaune



N° de produit	Unité d'emballage	N° de produit	Unité d'emballage	N° de produit	Unité d'emballage
longueur 2 m		longueur 2 m		Support incliné, sans vis	
Rail cuivre 35 x 15 mm, ép. 2,3 mm, non-perforé		Rail alu. 35 x 7,5 mm, ép. 1,5 mm, non-perforé		210-148	10
210-198	10	210-196	10	Vis M 5 x 8	
				210-149	100 (5 x 20)