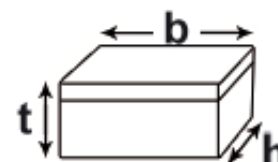
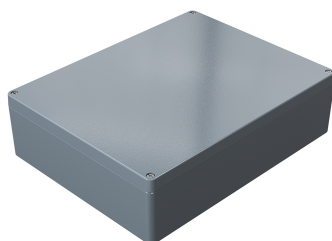


## Aluminium Standard – 01.31 40 11

Aluminium enclosure consisting of lid, seal, incl. captive +/-stainless steel screws, base with 2 or 4 earthing screws



Dimensions H x W x D (mm)	313 x 404 x 111
Weight (g)	5620
Order number	01.31 40 11
Product type	ALS 01200

- + Robust aluminium enclosure for mechanical engineering and automation technology
- + Fixing options for DIN rails and mounting plates
- + Usable in wide temperature area



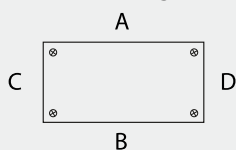
### Technical Data

Material	DIN EN 1706 EN AC-AISI 12 (Fe)
Colour	Powder coating, RAL 7001, silver grey, special colour on request
Ingress protection	IP 66 to EN 60529, higher protection on request
Impact resistance	7 Joule in reference to EN 60079-0
Temperature range	PU (polyurethane) seal (std.): -40°C to +90°C CR (chloroprene) seal: -40°C to +100°C VMQ (silicone) seal (optional): -60°C to +130°C
Other versions on request	EMC, SBG, SBGL, SWB, Silicone lid seal

## Aluminium Standard – 01.31 40 11

### Number of cable glands

Maximum number of cable glands to DIN 50262\*



M	PG	Side	
		A/B	C/D
12	17,25	105	68
16	25,30	50	28
20	27,60	39	26
25	37,95	20	12
32	48,30	14	7
40	60,95	6	4
50	69,00	5	3
63	74,75	5	3
75			
85			

### Commercial Data

Country of origin	IN
Pieces per packaging	1
Customs tariff number	85369095
Weight (g)	5620
GTIN	4250157900388

### ETIM Classification

ETIM-Class	EC000058
------------	----------

### Accessories

Description	Order number
External mounting brackets set = 4 pcs	10.03 11 02
External hinges Swivelling range 150°set = 2 pcs	10.02 70 01
Internal hinges swivelling range 95°, set = 2 pcs	10.02 20 01
Turn bolt fastener	12.01 62 01
DIN rails TS 35/7,5	10.06 14 27
Earth rail	10.06 20 11
Mounting plate	10.01 10 20
Allen lid screws	12.01 80 04