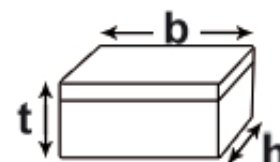
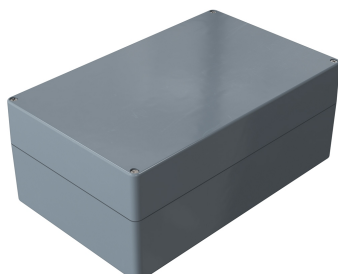


## Polyester Standard – 02.25 40 16

Plastic enclosure in glass fibre reinforced polyester consisting of lid, seal, incl. captive +/-stainless steel screws, base with 2 or 4 earthing screws



Dimensions H x W x D (mm)	250 x 400 x 161
Weight (g)	4730
Order number	02.25 40 16
Product type	POS 02120

- + Robust plastic enclosure for automation technology and mechanical engineering
- + Fixing options for DIN rails and mounting plates
- + Universal configuration



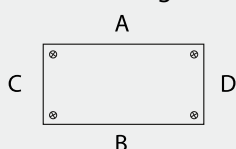
### Technical Data

Material	glass fibre reinforced thermoset polyester
Colour	RAL 7000, squirrel grey, special colour on request
Ingress protection	IP 66 to EN 60529 (IP 67 on request)
Impact resistance	7 Joule in reference to EN 60079-0
Temperature range	CR (chloroprene) seal: -40°C to +100°C
Other versions on request	EMC, Silicone lid seal

## Polyester Standard – 02.25 40 16

### Number of cable glands

Maximum number of cable glands to DIN 50262\*



M	PG	Side	
		A/B	C/D
12	17,25	117	50
16	25,30	56	24
20	27,60	42	18
25	37,95	21	10
32	48,30	14	7
40	60,95	7	3
50	69,00	5	3
63	74,75	5	2
75			
85			

### Commercial Data

Country of origin	IN
Pieces per packaging	1
Customs tariff number	39269097
Weight (g)	4730
GTIN	4250157900722

### ETIM Classification

ETIM-Class	EC000058
------------	----------

### Accessories

Description	Order number
External hinges Swivelling range 150°set = 2 pcs	10.02 70 01
DIN rails TS 35/7,5	10.06 14 27
Earth rail	10.06 20 11
Mounting plate	10.01 11 16
External mounting brackets set = 4 pcs	10.03 11 02
Allen lid screws	12.01 80 06