



# POK1.0805.2P.A

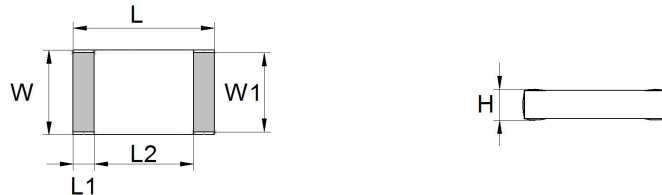
## SMD platinum sensor

For the automatic assembling on PCBs

### Benefits & Characteristics

- Excellent long-term stability
- Low self-heating
- Fast response time

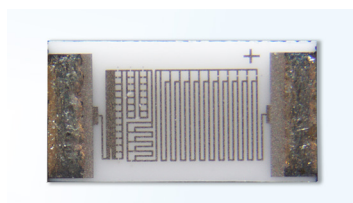
### Illustration<sup>1)</sup>



### Technical Data

Operating temperature range:	-50 °C to +150 °C
Nominal resistance:	100 Ω at 0 °C
Characteristics curve:	3850 ppm/K
Long-term stability:	< 0.04 % at 1000 h at 130 °C
Tolerance class (dependent on temperature range):	IEC 60751 F0.15                      A (IST AG reference)
Connection:	tin-coated (96.5Sn/3Ag/0.5Cu), LMP lead-free, (reflow soldering)
Dimensions:	1.9 / 0.25 / 1.3 x 1.25 / 1.15 x 0.45
Tolerance:	±0.2 mm (H ±0.15)
Solderability:	235 °C ≤ 8 s (DIN IEC 68 T2-20, Ta Meth. 1)
Resistance to soldering heat: <sup>1)</sup>	260 °C 10 s (DIN IEC 68 T2-20, Ta Meth. 1A)
<small>1) The soldering process can influence accuracy</small>	
Recommended applied current: <sup>2)</sup>	1 mA at 100 Ω
<small>2) Self-heating must be considered</small>	
Packaging:	Packed in bags (< 100 pcs)

### Product Photo





## Order Information

---

Description:	Item number:	Former main reference:
P0K1.0805.2P.A	100613	010.01147

## Additional Documents

---

Application Note:	Document name:
	ATP_E

