



# P1K0.1206.2P.B

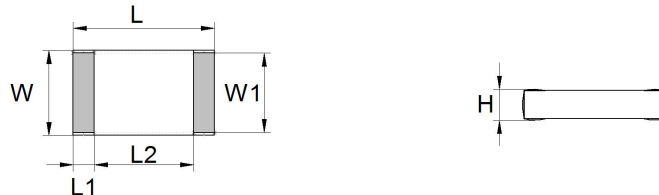
## SMD platinum sensor

For the automatic assembling on PCBs

### Benefits & Characteristics

- Excellent long-term stability
- Low self-heating
- Fast response time

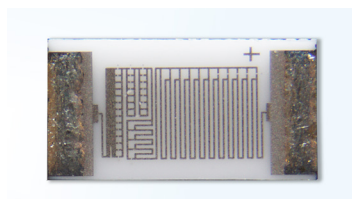
### Illustration<sup>1)</sup>



### Technical Data

Operating temperature range:	-50 °C to +150 °C
Nominal resistance:	1000 Ω at 0 °C
Characteristics curve:	3850 ppm/K
Long-term stability:	< 0.04 % at 1000 h at 130 °C
Tolerance class (dependent on temperature range):	IEC 60751 F0.3                      B (IST AG reference)
Connection:	tin-coated (96.5Sn/3Ag/0.5Cu), LMP lead-free, (reflow soldering)
Dimensions:	2.9 / 0.35 / 2.2 x 1.5 / 1.35 x 0.45
Tolerance:	±0.2 mm (H ±0.15)
Solderability:	235 °C ≤ 8 s (DIN IEC 68 T2-20, Ta Meth. 1)
Resistance to soldering heat: <sup>1)</sup> <small>1) The soldering process can influence accuracy</small>	260 °C 10 s (DIN IEC 68 T2-20, Ta Meth. 1A)
Recommended applied current: <sup>2)</sup> <small>2) Self-heating must be considered</small>	0.3 mA at 1000 Ω
Packaging:	Packed in bags (< 100 pcs)

### Product Photo





## Order Information

---

Description:	Item number:	Former main reference:
P1K0.1206.2P.B	100605	010.01135

## Additional Documents

---

Application Note:	Document name:
	ATP_E



Innovative Sensor Technology IST AG, Stegrütistrasse 14, 9642 Ebnat-Kappel, Switzerland  
Phone: +41 71 992 01 00 | Fax: +41 71 992 01 99 | Email: [info@ist-ag.com](mailto:info@ist-ag.com) | [www.ist-ag.com](http://www.ist-ag.com)

All mechanical dimensions are valid at 25 °C ambient temperature, if not differently indicated • All data except the mechanical dimensions only have information purposes and are not to be understood as assured characteristics • Technical changes without previous announcement as well as mistakes reserved • The information on this data sheet was examined carefully and will be accepted as correct; No liability in case of mistakes • Load with extreme values during a longer period can affect the reliability • The material contained herein may not be reproduced, adapted, merged, translated, stored, or used without the prior written consent of the copyright owner • Typing errors and mistakes reserved • Product specifications are subject to change without notice • All rights reserved