

# Cartridge Fuses

## Glass, Time-Lag, $\Phi 5.2\text{mm} \times 20\text{mm}$

**multicomp** PRO



**RoHS  
Compliant**

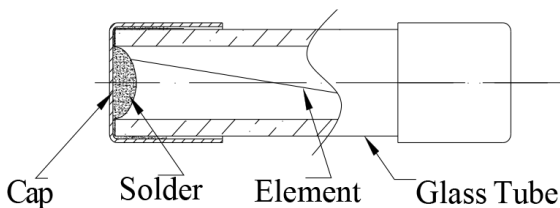
### Description

This series time-lag fuse with low breaking capacity for use with printed circuit boards is used in a large variety of applications. This  $\Phi 5\text{mm} \times 20\text{mm}$  device is constructed of a glass tube with electro-plated brass end caps. This series with 250V AC rating and 35A or 10In Ampere breaking capacity, offers excellent quality and is 100% tested for cold resistance and precise length.

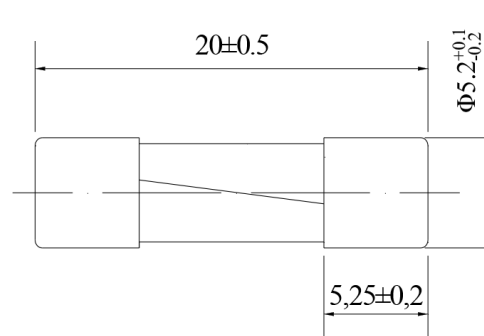
### Features

- Miniature fuse with time-lag, low breaking capacity
- $\Phi 5\text{mm} \times 20\text{mm}$  physical dimensions
- Glass tube, encapsulated design with nickel - plated brass end caps
- Protection against harmful over-currents in primary and secondary applications.
- Designed compliant to IEC 60127-2/III

### Mechanical Specifications



### Dimensions



### Electrical Specifications

Dimensions : Millimetres

#### Time vs Current Characteristics Table

(measured with constant current power supply)

Time vs Current Characteristics: IEC 60127-2/III					
Rated Current	100%	210%	275%	400%	1000%
100mA	>1h	<2min	200ms-10s	40ms-3s	10ms~300ms
125mA~10A	>1h	<2min	600ms~10s	150ms~3s	20ms~300ms
12A~16A	>30min	<5min	600ms~15s	150ms~5s	20ms~400ms

Newark.com/multicomp-pro  
Farnell.com/multicomp-pro  
sg.element14.com/b/multicomp-pro

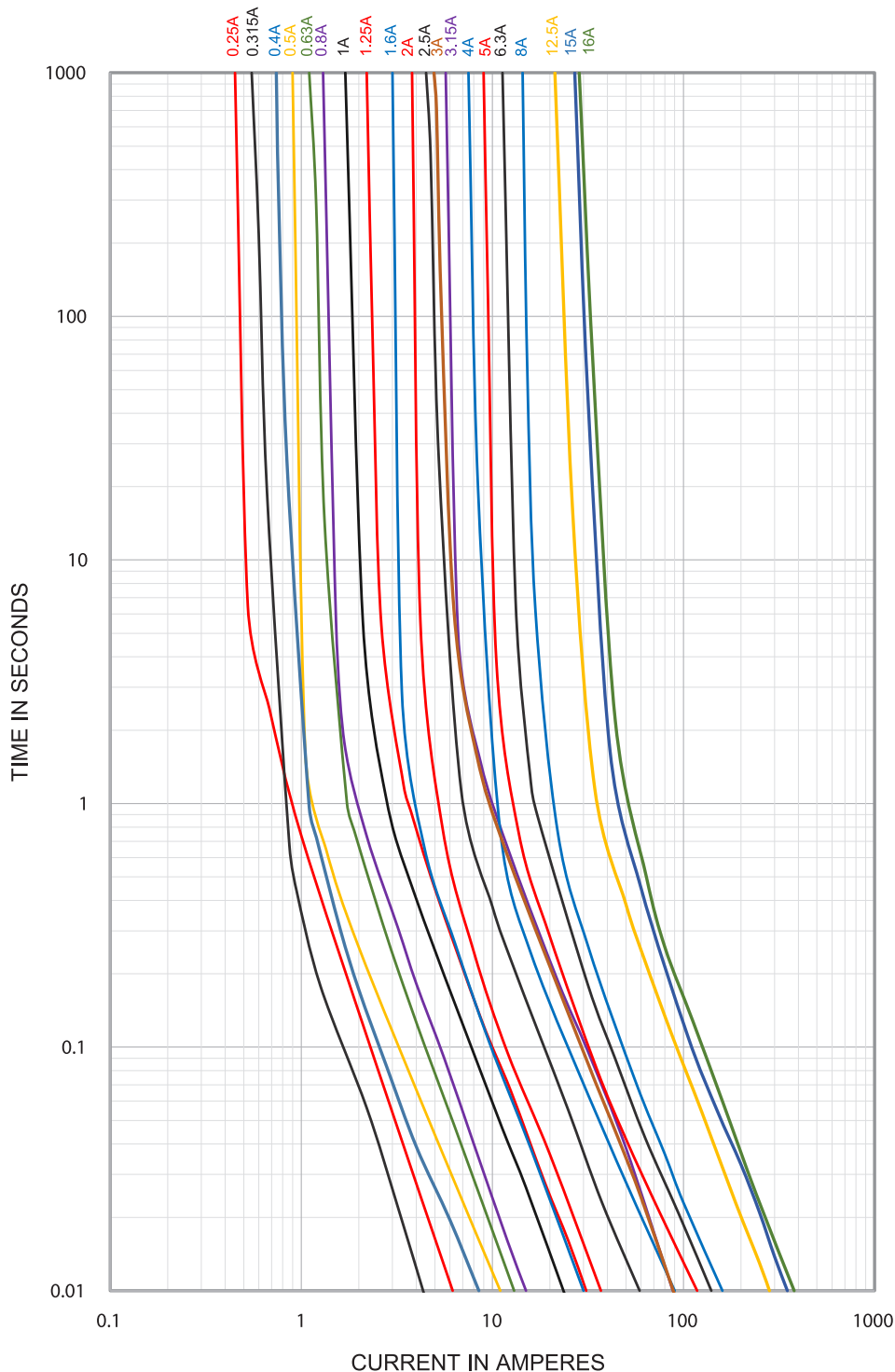
**multicomp** PRO

# Cartridge Fuses

Glass, Time-Lag,  $\Phi 5.2\text{mm} \times 20\text{mm}$

**multicomp** PRO

## Average Time Current (I-T) Curves



Newark.com/multicomp-pro  
Farnell.com/multicomp-pro  
sg.element14.com/b/multicomp-pro

**multicomp** PRO

# Cartridge Fuses

## Glass, Time-Lag, $\Phi 5.2\text{mm} \times 20\text{mm}$

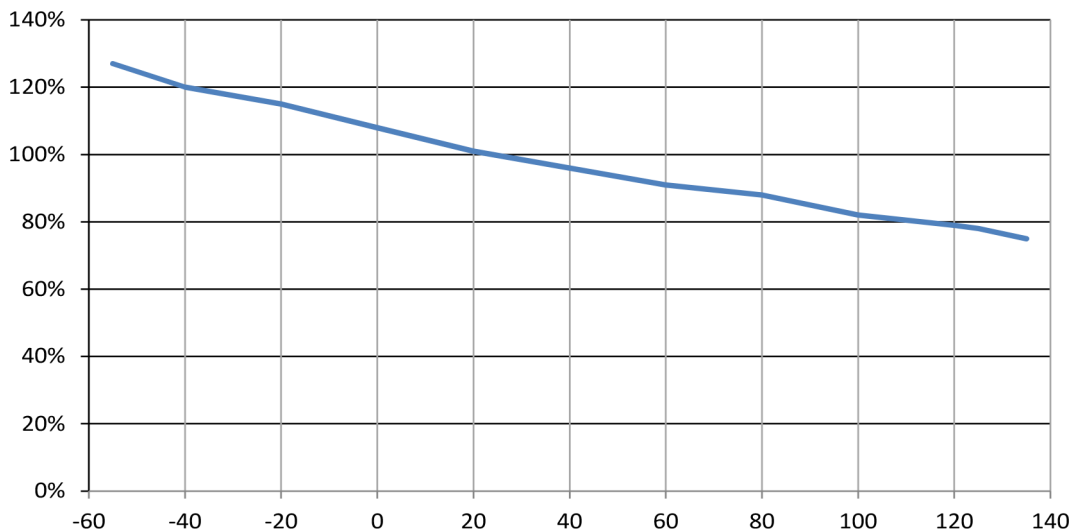


### Electrical characteristics

Electrical Characteristics at 25°C								Approvals						
Amp Code	Rated Current	Rated Voltage	Max Voltage Drop(mV)	Max.Power Dissipation (W)	Nominal Melting I <sup>2</sup> t (A <sup>2</sup> sec)	Typical cold Resistance (m $\Omega$ )	Breaking Capacity	VDE	CQC	cURus	PSE	CCC	KC	TUV
MP008903	3.00A	250V AC	120	1.6	78	19.1	35A or 10In@250V AC	○	○	●	○	○	○	○
MP008904	3.15A		100		98	17.2		●	○	●	●	●	●	○
MP008905	5.00A		100		139	10.8		●	○	●	●	●	●	○

Notes: (1) Permissible continuous operating current is 100% at ambient temperature of 23°C (73.4°F)  
 (2) The current values used for calculating I<sup>2</sup>T should be within the standard range of 8ms ~ 10ms.

### Temperature Derating Curve



### Part Number Table

Description	Part Number
Cartridge Fuse,Time-Lag, $\Phi 5.2\text{mm} \times 20\text{mm}$ , 3A, 125V AC, Clip Mount	MP008903
Cartridge Fuse,Time-Lag, $\Phi 5.2\text{mm} \times 20\text{mm}$ , 3.15A, 125V AC, Clip Mount	MP008904
Cartridge Fuse,Time-Lag, $\Phi 5.2\text{mm} \times 20\text{mm}$ , 5A, 125V AC, Clip Mount	MP008905

**Important Notice :** This data sheet and its contents (the "Information") belong to the members of the AVNET group of companies (the "Group") or are licensed to it. No licence is granted for the use of it other than for information purposes in connection with the products to which it relates. No licence of any intellectual property rights is granted. The Information is subject to change without notice and replaces all data sheets previously supplied. The Information supplied is believed to be accurate but the Group assumes no responsibility for its accuracy or completeness, any error in or omission from it or for any use made of it. Users of this data sheet should check for themselves the Information and the suitability of the products for their purpose and not make any assumptions based on information included or omitted. Liability for loss or damage resulting from any reliance on the Information or use of it (including liability resulting from negligence or where the Group was aware of the possibility of such loss or damage arising) is excluded. This will not operate to limit or restrict the Group's liability for death or personal injury resulting from its negligence. Multicomp Pro is the registered trademark of Premier Farnell Limited 2019.

Newark.com/multicomp-pro  
 Farnell.com/multicomp-pro  
 sg.element14.com/b/multicomp-pro

