

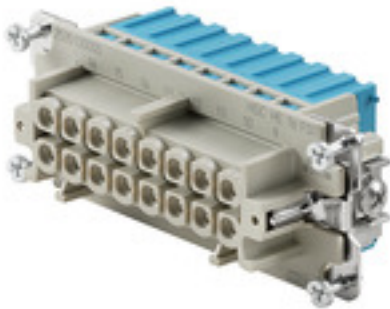
HDC HE 16 FQT BL**Weidmüller Interface GmbH & Co. KG**

Klingenbergstraße 26

D-32758 Detmold

Germany

www.weidmueller.com



With the SNAP IN connection, the conductor connection level is already open and the stripped connector can be simply inserted. In the end position, the patented clamping mechanism closes automatically. As a result, it requires virtually no maintenance and a safe, permanent and vibration-proof connection is established. Weidmüller is therefore the first and only manufacturer to offer this innovative connection system.

General ordering data

Version	HDC insert, Female, 500 V, 16 A, Number of poles: 16, SNAP IN, Size: 6
Order No.	2535130000
Type	HDC HE 16 FQT BL
GTIN (EAN)	4050118578232
Qty.	1 pc(s).

Creation date April 18, 2022 7:06:12 AM CEST

Catalogue status 08.04.2022 / We reserve the right to make technical changes.

HDC HE 16 FQT BL**Weidmüller Interface GmbH & Co. KG**

Klingenbergstraße 26

D-32758 Detmold

Germany

www.weidmueller.com

Technical data**Dimensions and weights**

Depth	84.5 mm	Depth (inches)	3.327 inch
Height	36.3 mm	Height (inches)	1.429 inch
Width	34 mm	Width (inches)	1.339 inch
Net weight	79 g		

Temperatures

Limit temperature	-40 °C ... 125 °C
-------------------	-------------------

Environmental Product Compliance

REACH SVHC	Lead 7439-92-1, Potassium perfluorobutane sulfonate 29420-49-3
------------	--

Dimensions

Width	34 mm
-------	-------

General data

BG		Insulating material	PC glass-fibre reinforced (UL-listed and railway-certified), PA 66/6
	6	Insulation strength	10 ¹⁰ Ω
Insulating material group	IIIa	Number of poles	16
Material	Copper alloy	Pollution severity	3
Plugging cycles, silver	≥ 500	Rated impulse voltage (DIN EN 61984)	6 kV
Rated current (DIN EN 61984)	16 A	Rated voltage according to UL/CSA	600 V AC/DC
Rated voltage (DIN EN 61984)	500 V	Size	6
Series	HE	Type	Female
Surface finish	Silver passivated	Volume resistance	≤2 mΩ
UL 94 flammability rating	V-0		

Connection data PE

Blade size, slotted (PE connection)	SD 0.8 x 4.0	Connection type PE	Screw connection
Fixing screw	M 4	Rated cross-section	4 mm ²
Stripping length PE connection	10 mm	Tightening torque, max. PE connection	1.5 Nm
Tightening torque, min. PE connection	1.2 Nm	Wire cross section, AWG (PE), max.	AWG 12
Wire cross section, AWG (PE), min.	AWG 20		

HDC HE 16 FQT BL**Weidmüller Interface GmbH & Co. KG**

Klingenbergstraße 26

D-32758 Detmold

Germany

www.weidmueller.com

Technical data**Version**

BG	6	Blade size	SD 0.6 x 3.5
Conductor cross-section, max.	2.5 mm ²	Conductor cross-section, min.	1 mm ²
Material	Copper alloy	Size	6
Stripping length, rated connection	10 mm	Surface finish	Silver passivated
Type of connection	SNAP IN	Volume resistance	≤2 mΩ
Wire connection cross section AWG, max.	AWG 16	Wire connection cross section AWG, min.	AWG 20
Wire connection cross section, finely stranded, max.	2.5 mm ²	Wire connection cross section, finely stranded, min.	1 mm ²
Wire connection cross-section, finely stranded with wire-end ferrules DIN 46228/1, max.	2.5 mm ²	Wire connection cross-section, finely stranded with wire-end ferrules DIN 46228/1, min.	1 mm ²
Wire connection cross-section, finely stranded with wire-end ferrules DIN 46228/4, max.	2.5 mm ²	Wire connection cross-section, finely stranded with wire-end ferrules DIN 46228/4, min.	1 mm ²
Wire cross-section, solid, max.	2.5 mm ²	Wire cross-section, solid, min.	1 mm ²

Classifications

ETIM 6.0	EC000438	ETIM 7.0	EC000438
ETIM 8.0	EC000438	ECLASS 9.0	27-44-02-05
ECLASS 9.1	27-44-02-05	ECLASS 10.0	27-44-02-05
ECLASS 11.0	27-44-02-05		

Approvals

Approvals



ROHS	Conform
UL File Number Search	E92202

Downloads

Engineering Data	CAD data – STEP
Engineering Data	EPLAN
Catalogues	Catalogues in PDF-format

HDC HE 16 FQT BL

Weidmüller Interface GmbH & Co. KG
Klingenbergstraße 26
D-32758 Detmold
Germany

www.weidmueller.com

Drawings

