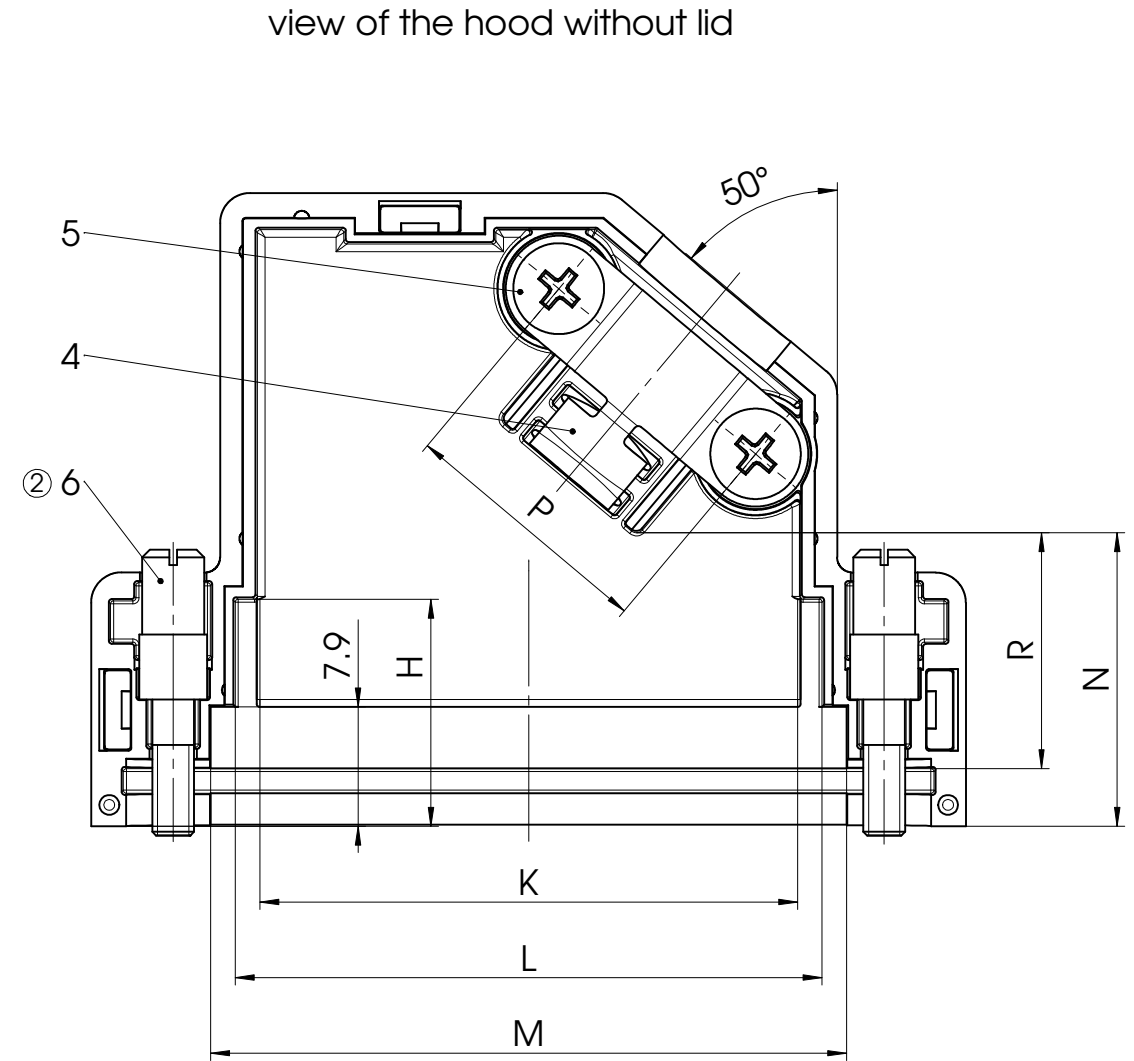
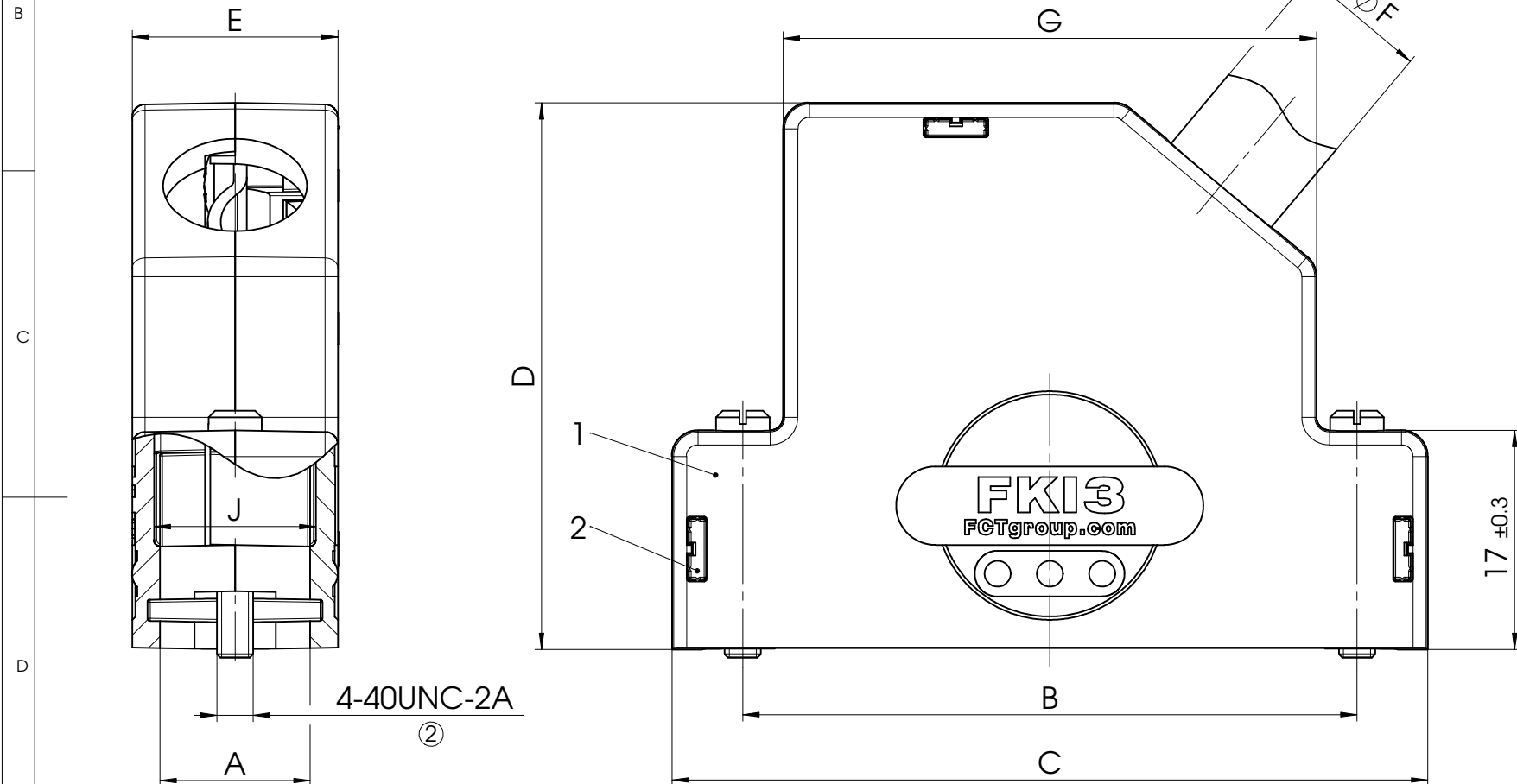
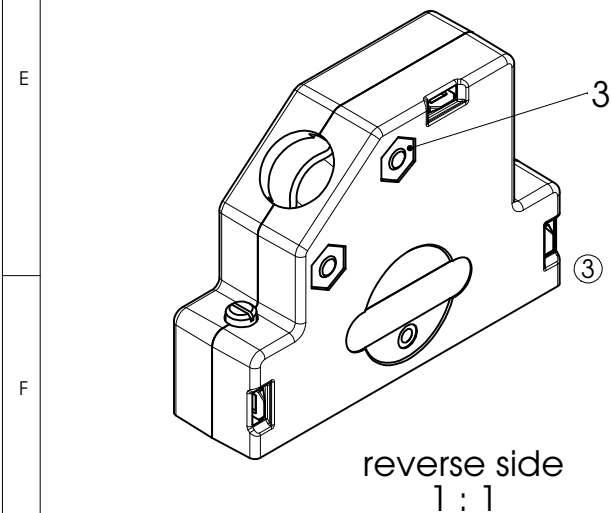


Order-No.	Shell Size / for No. of Contacts	A ±0.3	B ±0.1	C ±0.3	D ±0.3	E ±0.3	∅F min - max	G ±0.3	H ±0.3	J ±0.3	K ±0.3	L ±0.3	M ±0.3	N ±0.3	P ±0.3	R ±0.3
FKI1	1 / 9	11.5	25	36	36	16	3.5 - 7.5	22	-	12.4	17.2	-	20.4	15.7	12.8	11.9
FKI2	2 / 15	11.5	33.3	44.3	42	16	6.5 - 9	27.3	13.7	12.4	22	24.6	28	19.9	17	16.1
FKI3	3 / 25	11.5	47	58	42	16	6.5 - 11	41	15	12.4	35.6	38.8	42	19.5	17	15.7
FKI4	4 / 37	11.5	63.5	74.5	42	16	6.5 - 11	57.5	15.4	12.4	52.3	55.3	58.5	19.4	17	15.6
FKI5	5 / 50	14.2	61.1	73	42	19	9 - 13	55	16.5	19.3	49.8	53.4	65.8	17.4	19	13.9

∅F = Cable diameter



RoHS compliant



max. torque are 40 Ncm
Hood is snapped together
Part-No. 4, 5 and 6 not mounted

No.	St.	Part	Type Description/Material	Surface plating/Colour/Class
② 6	2	Locking screw	FVS1/5-4368 4-40 / Brass	nickel plated
5	2	Cable clamp screw	Steel	nickel plated
4	1	Cable clamp	Steel	tin plated
3	2	Locking nut	Brass	tin plated
2	3	Locking element	Polyester	black
1	1	Hood	FKI1-5 / Polyester	black

REV.	DATE	CH.-NO.	ORIGINAL: DIN A3-DRAWING AS A FILE	REPLACEMENT FOR:	PAGES 1
3	10-02-2011	22837		DWG.NO. FKI1-5	REV. 3
2	14-09-2010	22693			
1					

COMMENT: ALL RIGHTS ARE RESERVED BY US FOR THIS DRAWING. WITHOUT OUR PRIOR CONSENT, IT MAY NEITHER BE REPRODUCED NOR MADE AVAILABLE TO A THIRD PARTY. AND IT ALSO MAY NOT BE IMPROPERLY USED BY THE RECEIVER, OR A THIRD PARTY.