

1 YEAR
WARRANTY



Ω OMEGA™

User's Guide

*Shop online at
omega.com*

*e-mail: **info@omega.com**
or latest product manuals:
www.omegamanual.info*



TXUN-KIT **Loop Link USB** **Communications Interface**



omega.com info@omega.com

Servicing North America:

**U.S.A.
Headquarters:**

Omega Engineering, Inc.

Toll-Free: 1-800-826-6342 (USA & Canada only)

Customer Service: 1-800-622-2378 (USA & Canada only)

Engineering Service: 1-800-872-9436 (USA & Canada only)

Tel: (203) 359-1660

Fax: (203) 359-7700

e-mail: info@omega.com

For Other Locations Visit omega.com/worldwide

Table of Contents

Section	Page
Section 1 Warning	4
Section 2 Safety instructions	5
Section 2.1 Symbol Identification	5
Section 2.2 Safety Instructions	5
Section 3 Technical Characteristics	7
Section 4 Installation	8
Section 4.1 System requirements	8
Section 4.2 Installation of Preset	8
Section 4.3 Installation from USB	8
Section 4.4 Installation from CD-ROM	8
Section 5 Preset installation from Windows 7/8/10	9-17
Section 5.1 TXUN-KIT installation on Windows 7	10
Section 5.2 TXUN-KIT installation on Windows 8	11
Section 6 Troubleshooting on Windows 7 & 8	18
Section 7 TXUN-KIT installation on Windows 10	19-23
Section 8 Configuration / Connection	24
Section 8.2 Connection of Omega devices using EZ-Mini	25
Section 8.3 Connection of Omega devices using a modular ..	26

**GENERAL****WARNING**

When connected to TXUN Series by the communication cable, this device can get connected to hazardous electric voltages. Ignoring this warning can result in severe personal injury or mechanical damage.

To avoid the risk of electric shock and fire, the safety instructions of this manual must be observed and the guidelines followed.

The device must only be applied as described in the following.

Prior to the commissioning of the device, this manual must be examined carefully.

Only qualified personnel (technicians) should use this device.

If the device is used in a manner not specified by the manufacturer, the protection provided by the device may be impaired.

**HAZARDOUS
VOLTAGE****WARNING**

The following operations must only be carried out on a device that is not connected to TXUN Series and a PC:

Troubleshooting the device.

Repair of the device must be done by Omega electronics A/S only.

**INSTALLATION****WARNING**

The female communication connector of TXUN Series is connected to the input terminals on which dangerous voltages can occur. It must only be connected to the programming unit TXUN-KIT by way of the attached communication cable.

TXUN-KIT is provided with intrinsically safe galvanic isolation and protective components according to EN60079-11 § 6.2.5 to assure that the safety components within the connected intrinsically safe devices are protected against overload.

Section 2.1 - Symbol Identification



Triangle with an exclamation mark: Warning/demand. Potentially lethal situations.



The **CE mark** proves the compliance of the device with the requirements of the EU directives.



The **double insulation symbol** shows that the device is protected by double or reinforced insulation.

Section 2.2 - Safety instructions

Definitions

Hazardous voltages have been defined as the ranges: 75 to 1500 Volt DC, and 50 to 1000 Volt AC.

Technicians are qualified persons educated or trained to mount, operate, and also trouble-shoot technically correct and in accordance with safety regulations.

Operators, being familiar with the contents of this manual, adjust and operate the knobs or potentiometers during normal operation.

Receipt and unpacking

Unpack the device without damaging it. The packing should always follow the device until this has been permanently mounted. Check at the receipt of the device whether the type corresponds to the one ordered.

Environment

Avoid direct sunlight, dust, high temperatures, mechanical vibrations and shock, as well as rain and heavy moisture. If necessary, heating in excess of the stated limits for ambient temperatures should be avoided by way of ventilation.

All devices fall under Installation Category II, Pollution Degree 1, and Insulation Class II.

Mounting

Only technicians who are familiar with the technical terms, warnings, and instructions in the manual and who are able to follow these should connect the device.

Should there be any doubt as to the correct handling of the device, please contact your local distributor or, alternatively

PROGRAMMING

During programming, the measuring and connection of external voltages must be carried out according to the specifications of this manual and the manual for the unit to be programmed.

The technician must use tools and instruments that are safe to use.

NORMAL OPERATION

Operators are only allowed to adjust and operate devices that are safely fixed in panels, etc., thus avoiding the danger of personal injury and damage. This means there is no electrical shock hazard, and the device is easily accessible.

CLEANING

When disconnected, the device may be cleaned with a cloth moistened with distilled water.

LIABILITY

To the extent that the instructions in this manual are not strictly observed, the customer cannot advance a demand against Omega electronics A/S that would otherwise exist according to the concluded sales agreement.

Section 3 - Technical Characteristics

Programming

During programming, the measuring and connection of external voltages must be carried out according to the specifications of this manual and the manual for the unit to be programmed.

The technician must use tools and instruments that are safe to use.

Application

Loop Link TXUN-KIT is a USB communications interface for configuration and monitoring of Omega PC-programmable devices. The USB communication is supported by the Windows versions 7, 8 and 10. Omega devices available in the configuration program PReset ver. 5.0 or higher, can be programmed by way of Loop Link TXUN-KIT.

Technical characteristics

The PC program CD PReset ver. 5.0 or higher contains the necessary (unsigned) USB drivers. Loop Link TXUN-KIT is supplied from the USB port of the PC. If you want to conserve power on a laptop, the USB connector of the TXUN-KIT can be connected to an externally supplied hub. The communications connector on the Omega devices is galvanically isolated from the USB connection on the PC.

Section 4 - Installation

Section 4.1 - System requirements

Windows 7, 8 or 10 with the following recommendations:

- Processor > 1 GHz
- Memory 1 GB RAM (32-bit) or 2 GB RAM (64-bit)
- Hard disk space 16 GB (32-bit) or 20 GB (64-bit)

N.B.: Loop Link TXUN-KIT devices with serial no. <059999999 are NOT compatible with Windows 7, 8 and 10.

Section 4.2 - Installation of Preset

The USB communications interface Loop Link TXUN-KIT must not be connected to the USB port of the PC until after installation of the PReset program.

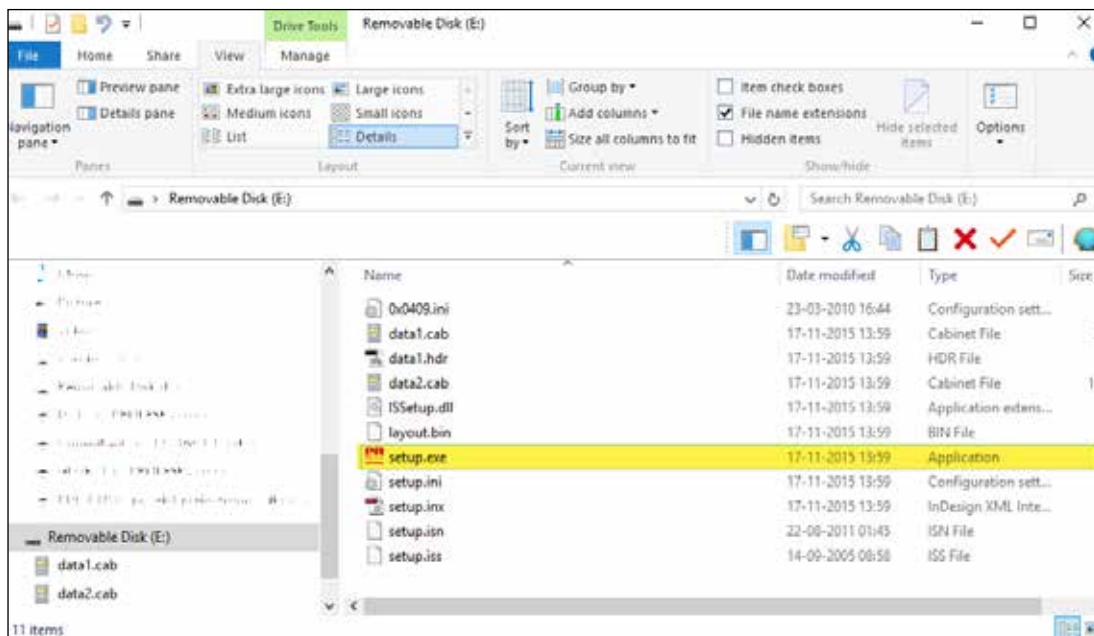
PReset will be installed on your hard disk and the registry will be updated with all necessary information on the program. A PReset icon will automatically be placed on the desk top.

Section 4.3 - Installation from CD-ROM

1. Insert the CD-ROM in the CD-ROM drive and the dialog "InstallShield Wizard PReset - INSTALL" will start automatically.
2. When the installation program has been started, on-screen guidelines will guide you through the rest of the installation.

Section 4.4 - Installation from USB

1. Plug in the USB.
3. Open File Explorer and locate the USB drive. Double-click on the file "setup.exe" to start the installation.

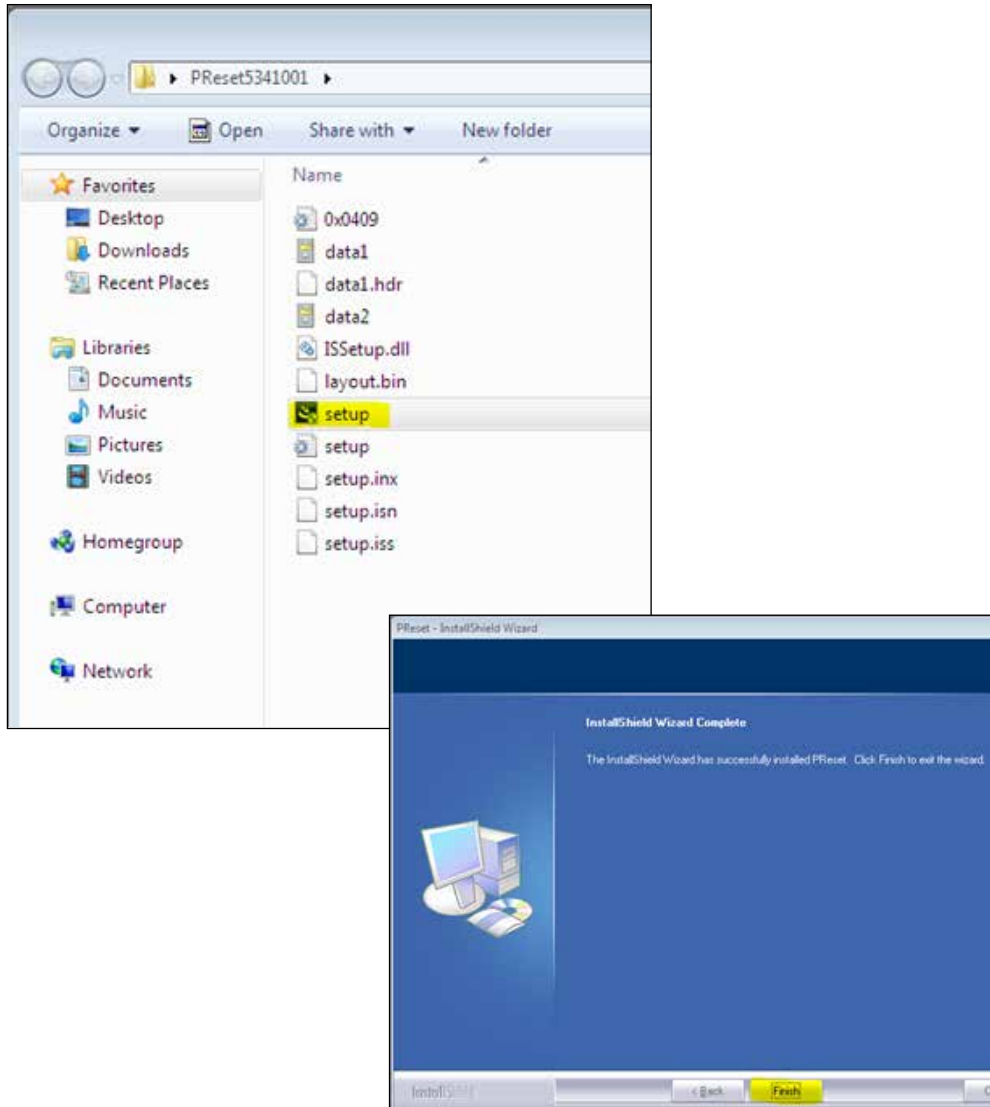


Section 5 - PRreset installation on Windows 7 / 8 / 10

To install PRreset on Windows 7 / Windows 8 / Windows 10 it is necessary to be a local administrator on the PC.

Install from the CD or the USB or download the software from www.prelectronics.com

Run setup and follow the instructions on the screen.



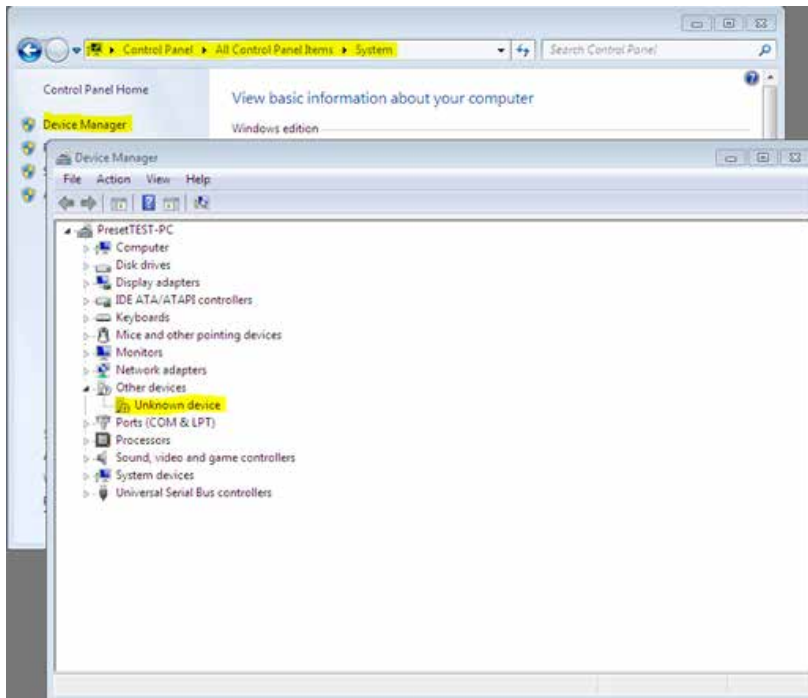
Section 5.1 - TXUN-KIT installation on Windows 7

To install TXUN-KIT on Windows 7 it is necessary to be a local administrator on the pc.

1. Connect your TXUN-KIT to a USB port on your machine.
2. Click [Close] in the following dialog:

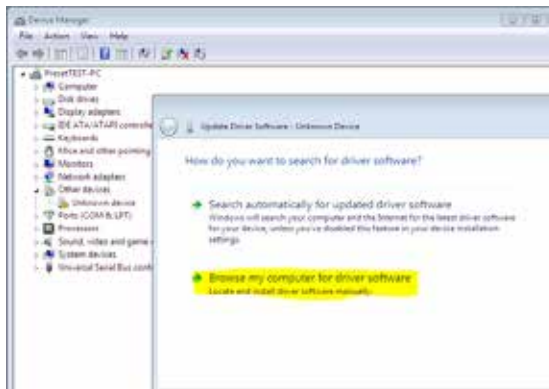


3. Go to Windows control panel and click [System] and then [Device manager].

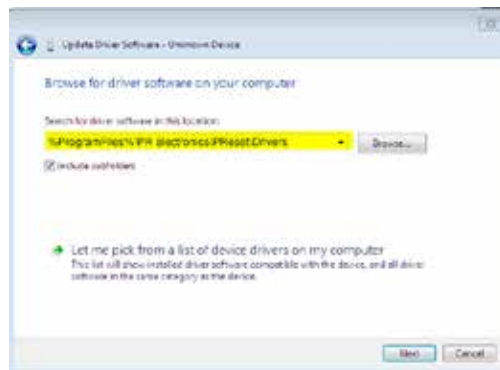


4. Right click the [Unknown device] and click [Update driver software].

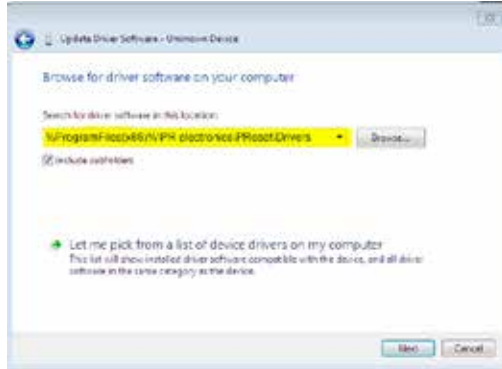
5. Click [Browse my Computer for driver software].



6. OMeSet path

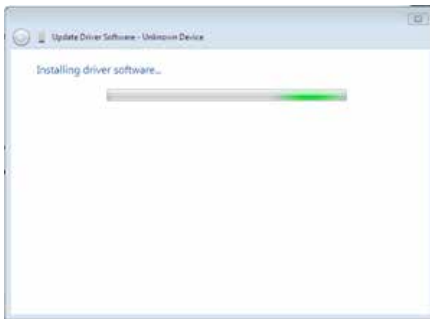


OMeset path

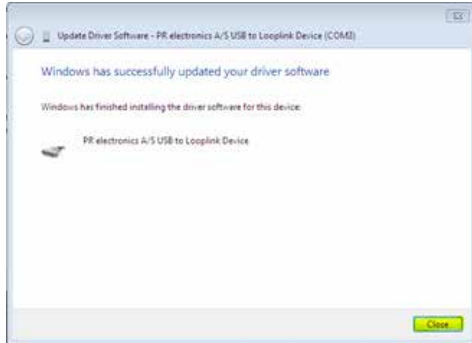


7. Click [Next].

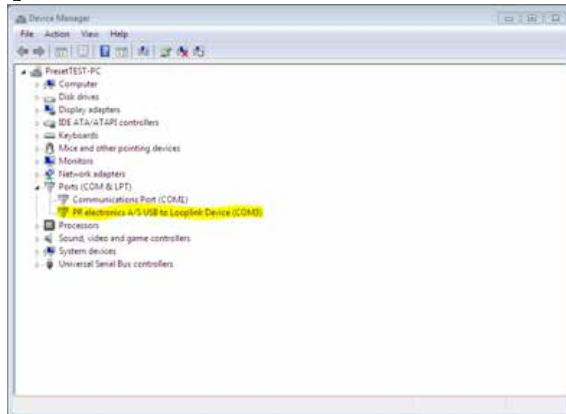
8. Now the driver for your TXUN-KIT will be installed.



9. When you see this screen click [Close].



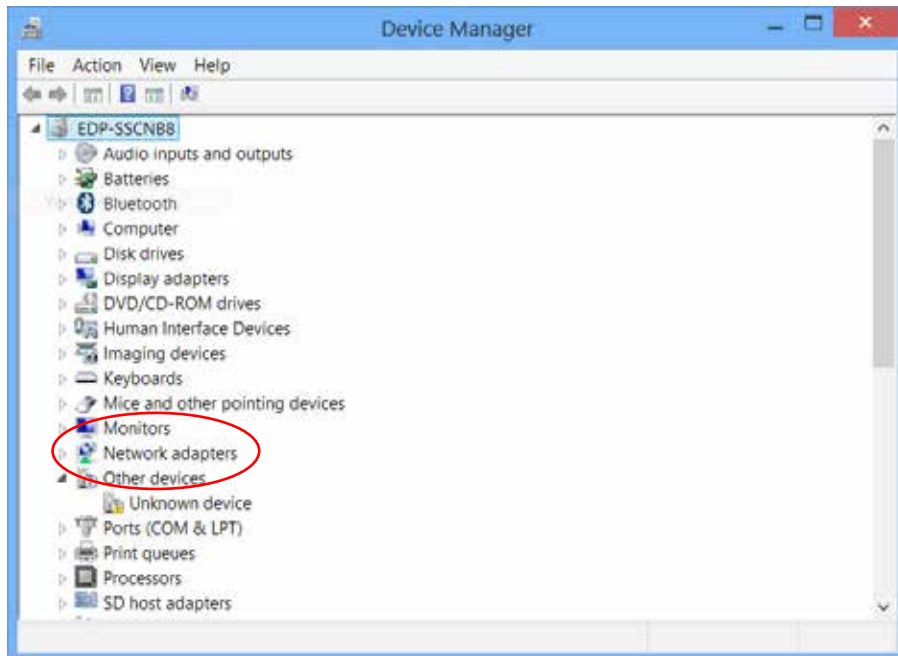
10. The installation of TXUN-KIT driver is complete!



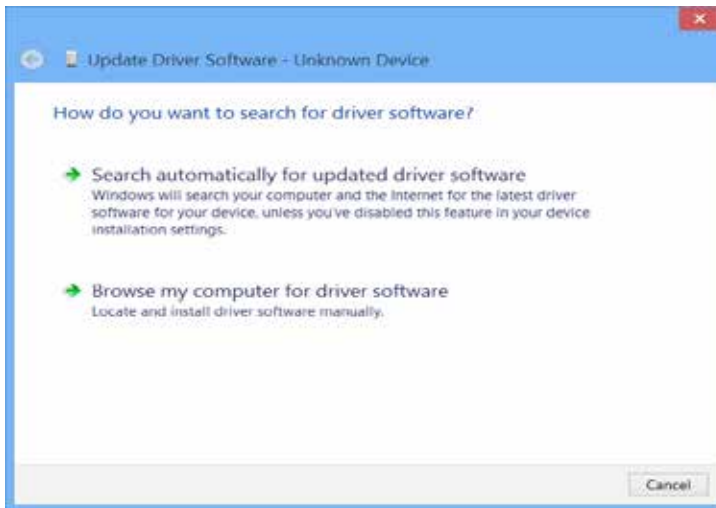
Section 5.2 - OMeSet installation on Windows 8

To install TXUN-KIT on Windows 8 it is necessary to be a local administrator on the pc.

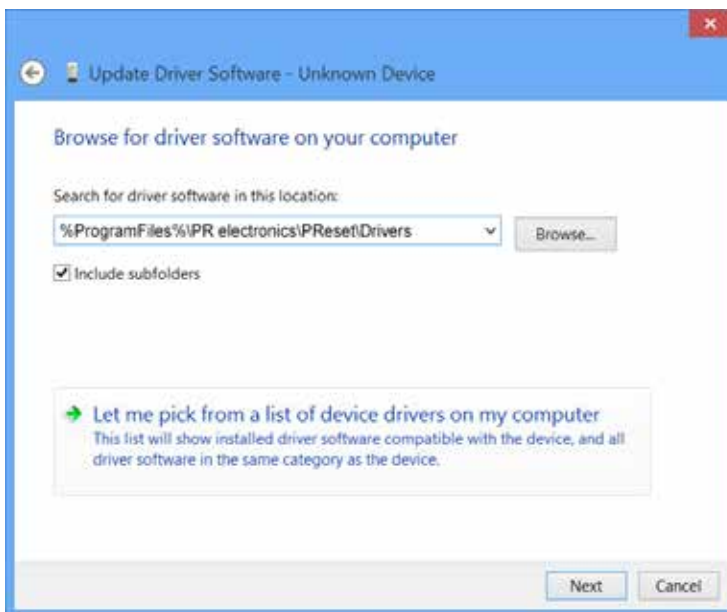
1. Connect your TXUN-KIT to a USB port on your machine.
Go to Windows control panel and click [System] and then [Device manager].
2. Right click the [Unknown device] and click [Update driver software].



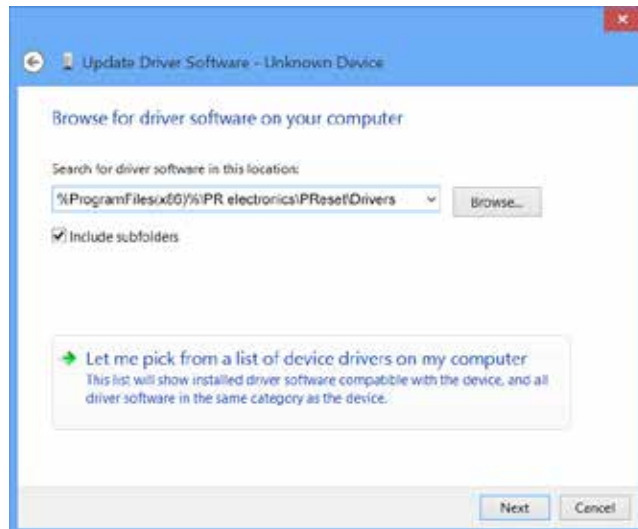
3. Click [Browse my Computer for driver software].



4. OMeSet path



OMeset path

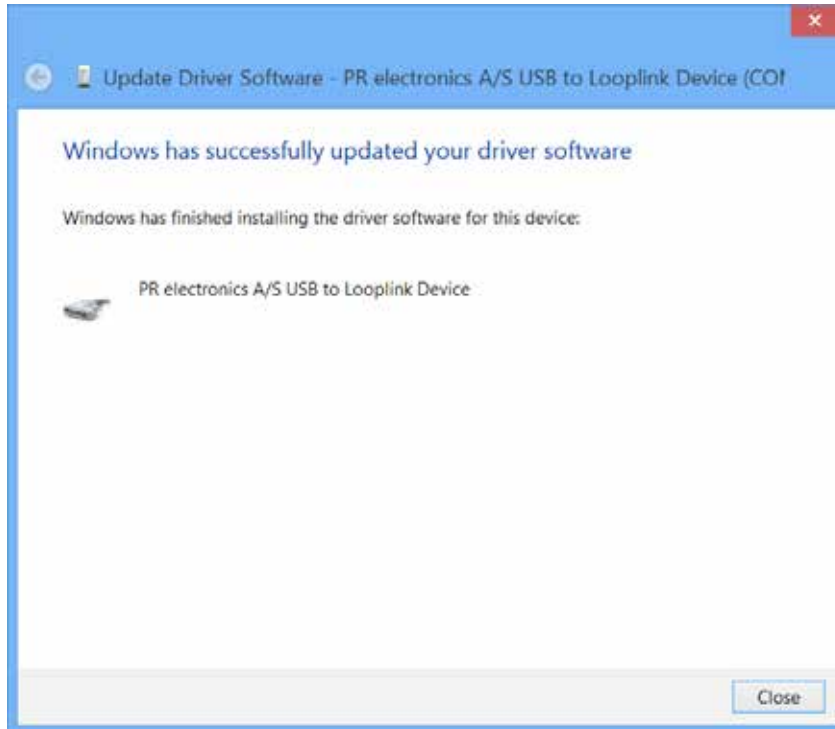


5. Click [Next].

6. Click [Install]. Now the driver for your TXUN-KIT will be installed.



7. When you see this screen click [Close]. The installation of TXUN-KIT driver is complete!



Section 6 - Troubleshooting for Windows 7 & 8

If you are unable to install the USB Loop Link follow these steps:

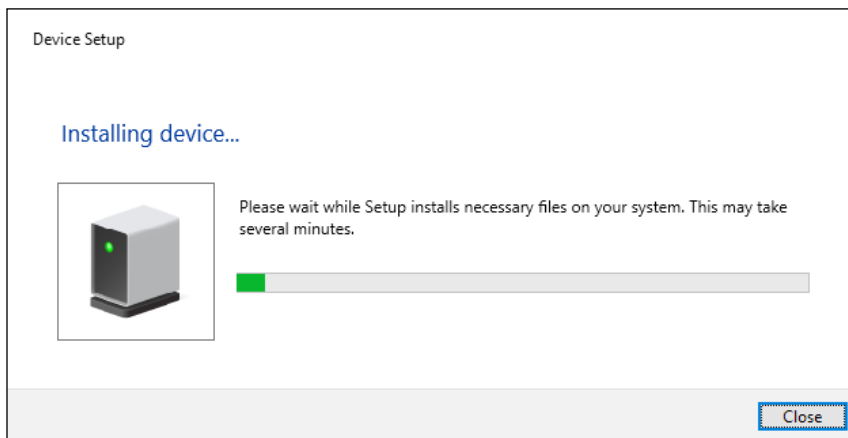
1. Disconnect the TXUN-KIT.
2. Go to the Control Panel.
3. Go to Devices and Printers.
4. Locate your PC (under devices).
5. Right click on your PC and choose "Device installation settings".
6. Allow Windows to "Always install the best driver software from Windows update".
7. Make sure you are connected to the internet.
8. Reconnect the TXUN-KIT.



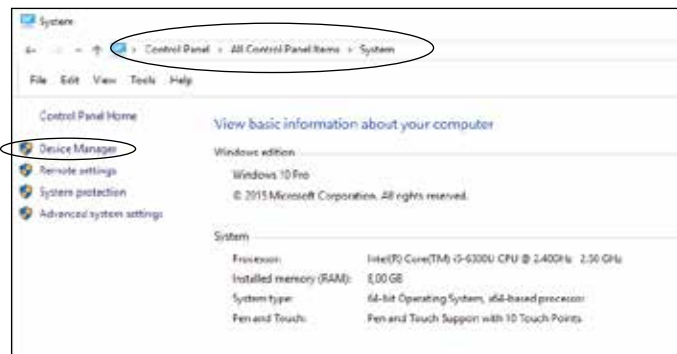
Section 7 - TXUN-KIT

To install TXUN-KIT on Windows 10 it is necessary to be a local administrator on the pc.

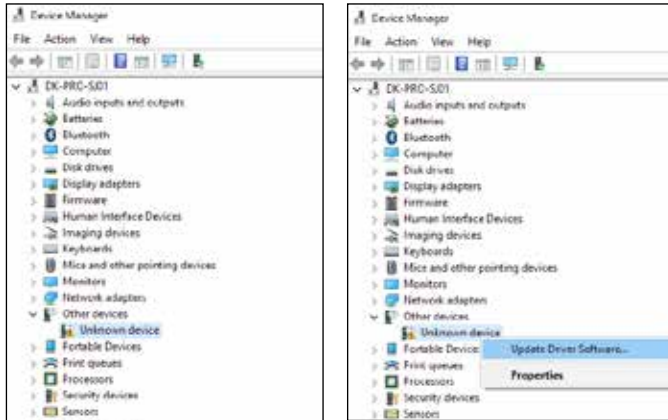
1. Connect your TXUN-KIT to a USB port on your machine.
2. Windows 10 will automatically start the installation process.



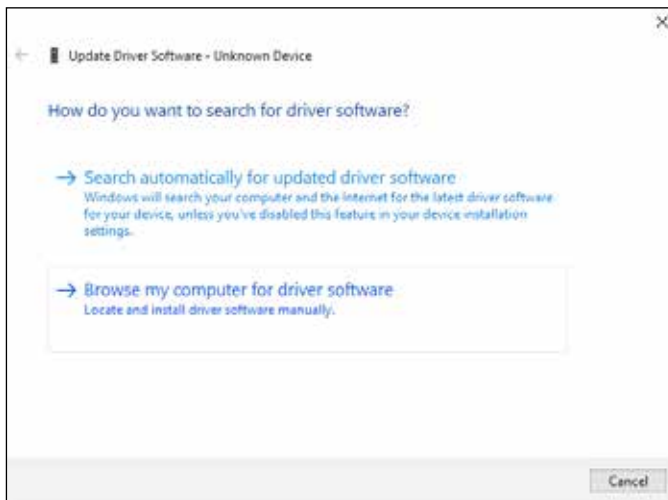
3. Go to Windows control panel and click [System] and then [Device manager].



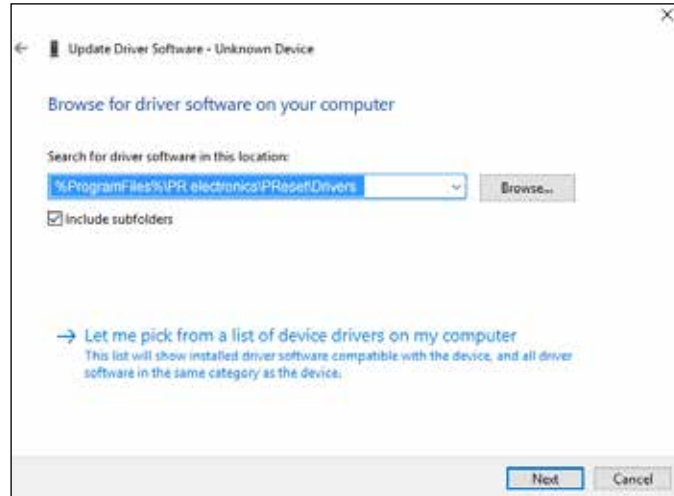
4. Right click the [Unknown device] and click [Update driver software].



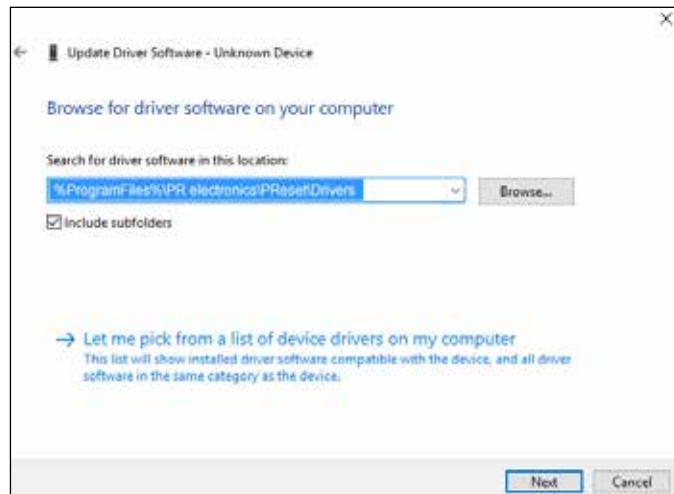
5. Click [Browse my Computer for driver software].



6. OMeset path

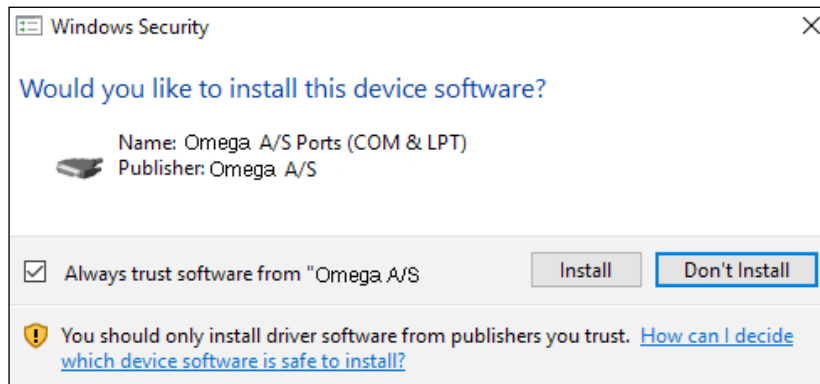


OMeset path

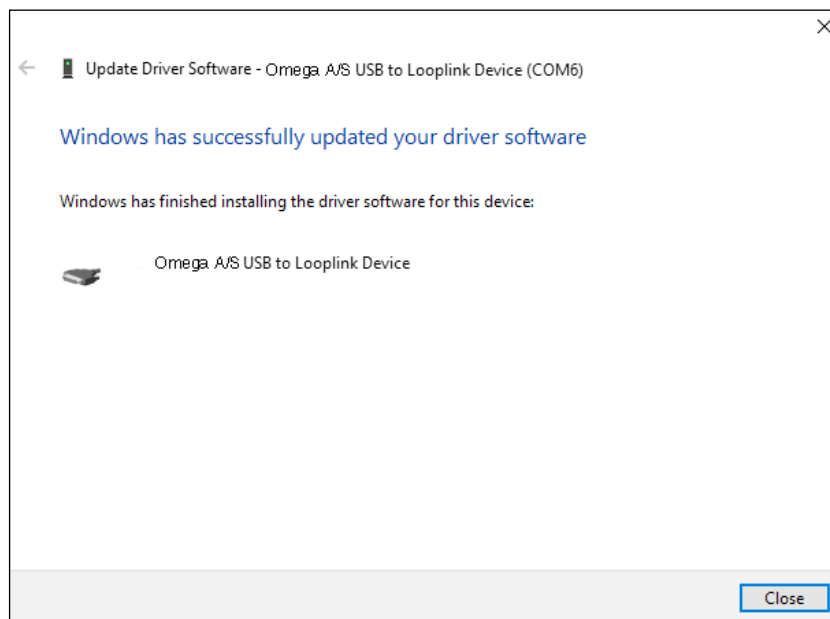


7. Click [Next].

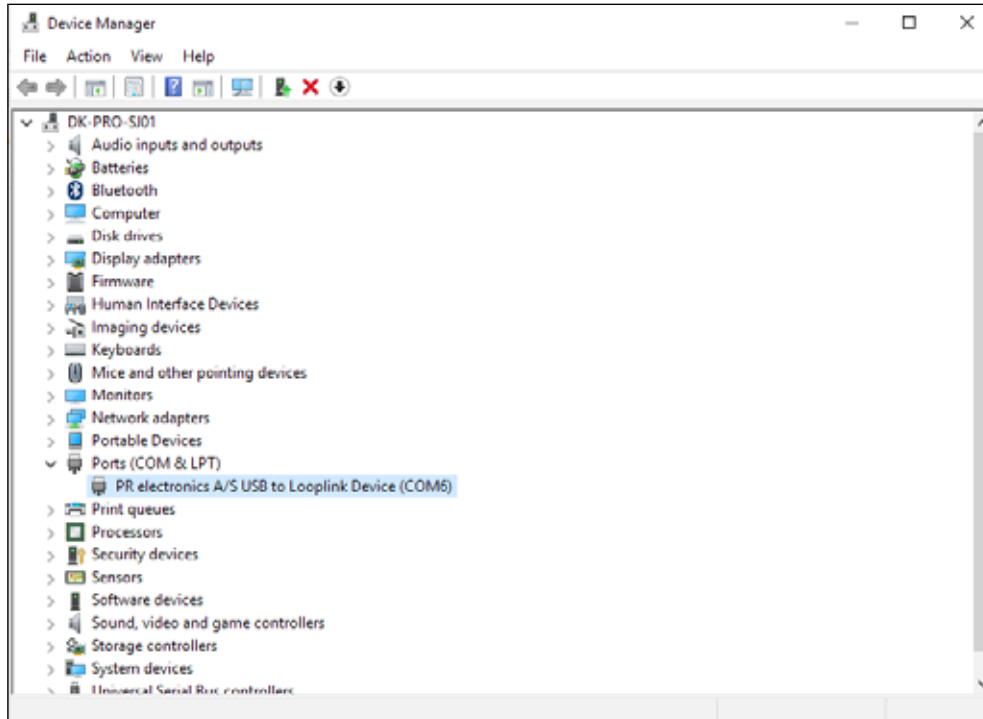
8. Click [Install]. Now the driver for your TXUN-KIT will be installed.



9. When you see this screen click [Close]. The installation of the TXUN-KIT driver is complete!

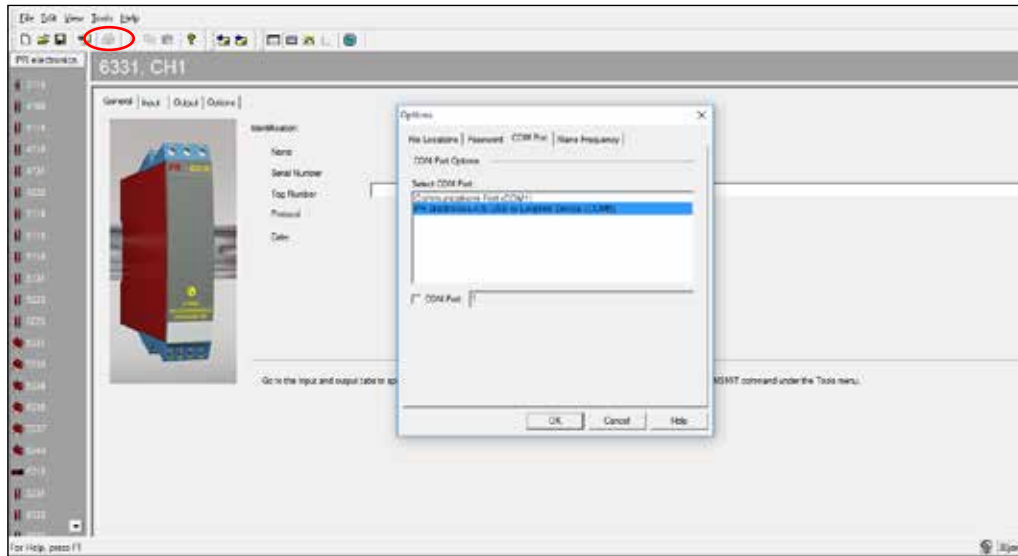


10. You can now see the TXUN-KIT USB to Loop Link device in the Device Manager.

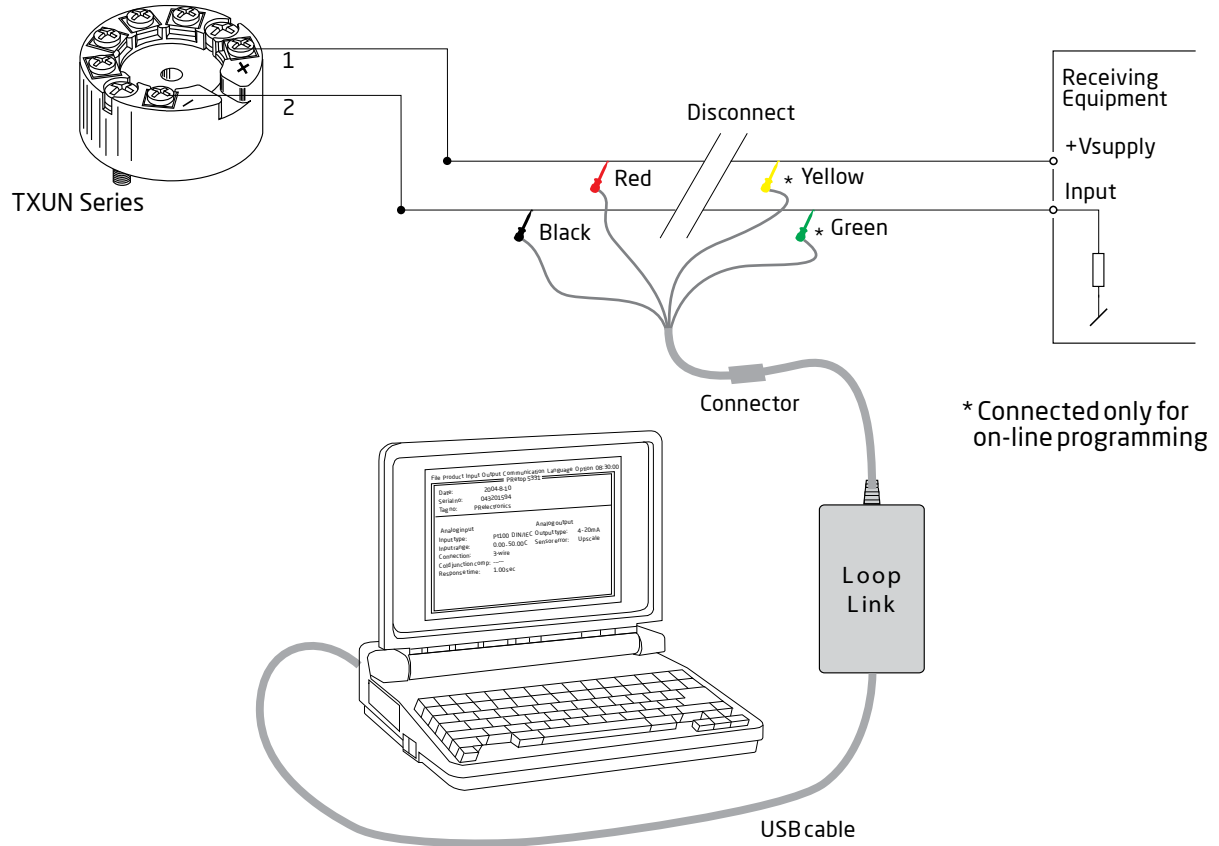


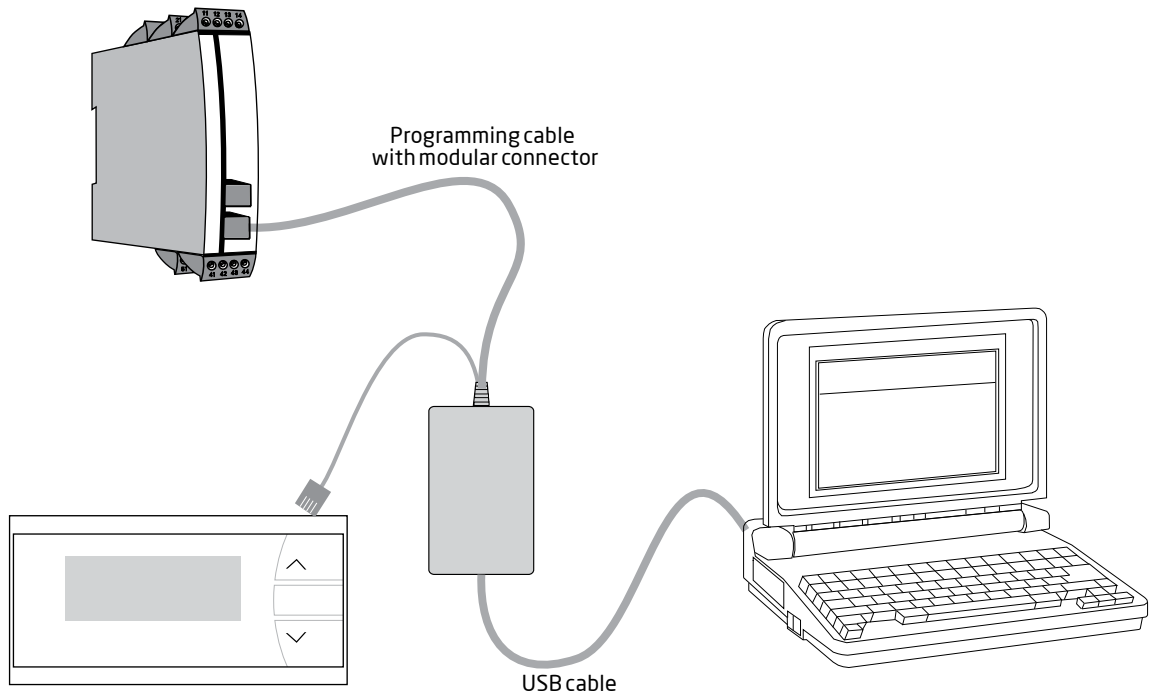
Section 8.1 - Configuration of USB Communication in Preset

1. Start the OMeSet program and choose [Tools] [Select COM port], and the "Options" window is shown on screen.
2. Select Omega Loop Link. Click OK.
3. If you want to configure Loop Link for other USB ports, you must connect Loop Link to these ports and install the USB drivers for each port.



Section 8.2 - Configuration of USB Communication in Preset





WARRANTY/DISCLAIMER

OMEGA ENGINEERING, INC. warrants this unit to be free of defects in materials and workmanship for a period of **13 months** from date of purchase. OMEGA's WARRANTY adds an additional one (1) month grace period to the normal **one (1) year product warranty** to cover handling and shipping time. This ensures that OMEGA's customers receive maximum coverage on each product.

If the unit malfunctions, it must be returned to the factory for evaluation. OMEGA's Customer Service Department will issue an Authorized Return (AR) number immediately upon phone or written request. Upon examination by OMEGA, if the unit is found to be defective, it will be repaired or replaced at no charge. OMEGA's WARRANTY does not apply to defects resulting from any action of the purchaser, including but not limited to mishandling, improper interfacing, operation outside of design limits, improper repair, or unauthorized modification. This WARRANTY is VOID if the unit shows evidence of having been tampered with or shows evidence of having been damaged as a result of excessive corrosion; or current, heat, moisture or vibration; improper specification; misapplication; misuse or other operating conditions outside of OMEGA's control. Components in which wear is not warranted, include but are not limited to contact points, fuses, and triacs.

OMEGA is pleased to offer suggestions on the use of its various products. However, OMEGA neither assumes responsibility for any omissions or errors nor assumes liability for any damages that result from the use of its products in accordance with information provided by OMEGA, either verbal or written. OMEGA warrants only that the parts manufactured by the company will be as specified and free of defects. OMEGA MAKES NO OTHER WARRANTIES OR REPRESENTATIONS OF ANY KIND WHATSOEVER, EXPRESSED OR IMPLIED, EXCEPT THAT OF TITLE, AND ALL IMPLIED WARRANTIES INCLUDING ANY WARRANTY OF MERCHANTABILITY AND FITNESS FOR A PARTICULAR PURPOSE ARE HEREBY DISCLAIMED. LIMITATION OF LIABILITY: The remedies of purchaser set forth herein are exclusive, and the total liability of OMEGA with respect to this order, whether based on contract, warranty, negligence, indemnification, strict liability or otherwise, shall not exceed the purchase price of the component upon which liability is based. In no event shall OMEGA be liable for consequential, incidental or special damages.

CONDITIONS: Equipment sold by OMEGA is not intended to be used, nor shall it be used: (1) as a "Basic Component" under 10 CFR 21 (NRC), used in or with any nuclear installation or activity; or (2) in medical applications or used on humans. Should any Product(s) be used in or with any nuclear installation or activity, medical application, used on humans, or misused in any way, OMEGA assumes no responsibility as set forth in our basic WARRANTY/DISCLAIMER language, and, additionally, purchaser will indemnify OMEGA and hold OMEGA harmless from any liability or damage whatsoever arising out of the use of the Product(s) in such a manner.

RETURN REQUESTS/INQUIRIES

Direct all warranty and repair requests/inquiries to the OMEGA Customer Service Department. BEFORE RETURNING ANY PRODUCT(S) TO OMEGA, PURCHASER MUST OBTAIN AN AUTHORIZED RETURN (AR) NUMBER FROM OMEGA'S CUSTOMER SERVICE DEPARTMENT (IN ORDER TO AVOID PROCESSING DELAYS). The assigned AR number should then be marked on the outside of the return package and on any correspondence.

The purchaser is responsible for shipping charges, freight, insurance and proper packaging to prevent breakage in transit.

FOR **WARRANTY** RETURNS, please have the following information available BEFORE contacting OMEGA:

1. Purchase Order number under which the product was PURCHASED,
2. Model and serial number of the product under warranty, and
3. Repair instructions and/or specific problems relative to the product.

FOR **NON-WARRANTY** REPAIRS, consult OMEGA for current repair charges. Have the following information available BEFORE contacting OMEGA:

1. Purchase Order number to cover the COST of the repair,
2. Model and serial number of the product, and
3. Repair instructions and/or specific problems relative to the product.

OMEGA's policy is to make running changes, not model changes, whenever an improvement is possible. This affords our customers the latest in technology and engineering.

OMEGA is a trademark of OMEGA ENGINEERING, INC.

© Copyright 2018 OMEGA ENGINEERING, INC. All rights reserved. This document may not be copied, photocopied, reproduced, translated, or reduced to any electronic medium or machine-readable form, in whole or in part, without the prior written consent of OMEGA ENGINEERING, INC.

Where Do I Find Everything I Need for Process Measurement and Control? **OMEGA...Of Course!** *Shop online at omega.com*

TEMPERATURE

- ☑ Thermocouple, RTD & Thermistor Probes, Connectors, Panels & Assemblies
- ☑ Wire: Thermocouple, RTD & Thermistor
- ☑ Calibrators & Ice Point References
- ☑ Recorders, Controllers & Process Monitors
- ☑ Infrared Pyrometers

PRESSURE, STRAIN AND FORCE

- ☑ Transducers & Strain Gages
- ☑ Load Cells & Pressure Gages
- ☑ Displacement Transducers
- ☑ Instrumentation & Accessories

FLOW/LEVEL

- ☑ Rotameters, Gas Mass Flowmeters & Flow Computers
- ☑ Air Velocity Indicators
- ☑ Turbine/Paddlewheel Systems
- ☑ Totalizers & Batch Controllers

pH/CONDUCTIVITY

- ☑ pH Electrodes, Testers & Accessories
- ☑ Benchtop/Laboratory Meters
- ☑ Controllers, Calibrators, Simulators & Pumps
- ☑ Industrial pH & Conductivity Equipment

DATA ACQUISITION

- ☑ Communications-Based Acquisition Systems
- ☑ Data Logging Systems
- ☑ Wireless Sensors, Transmitters, & Receivers
- ☑ Signal Conditioners
- ☑ Data Acquisition Software

HEATERS

- ☑ Heating Cable
- ☑ Cartridge & Strip Heaters
- ☑ Immersion & Band Heaters
- ☑ Flexible Heaters
- ☑ Laboratory Heaters

ENVIRONMENTAL MONITORING AND CONTROL

- ☑ Metering & Control Instrumentation
- ☑ Refractometers
- ☑ Pumps & Tubing
- ☑ Air, Soil & Water Monitors
- ☑ Industrial Water & Wastewater Treatment
- ☑ pH, Conductivity & Dissolved Oxygen Instruments