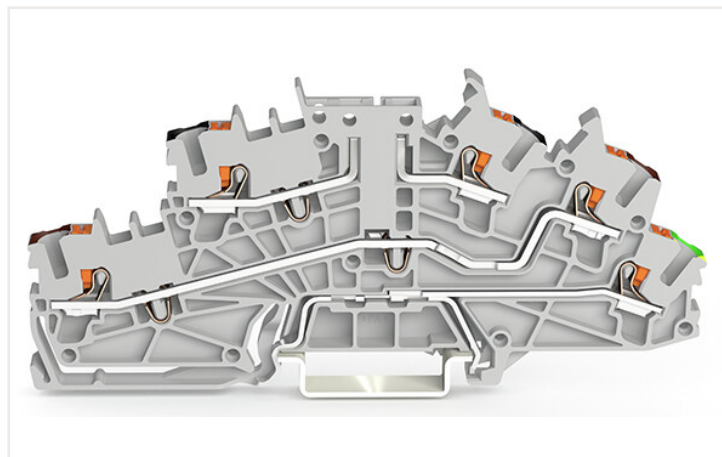
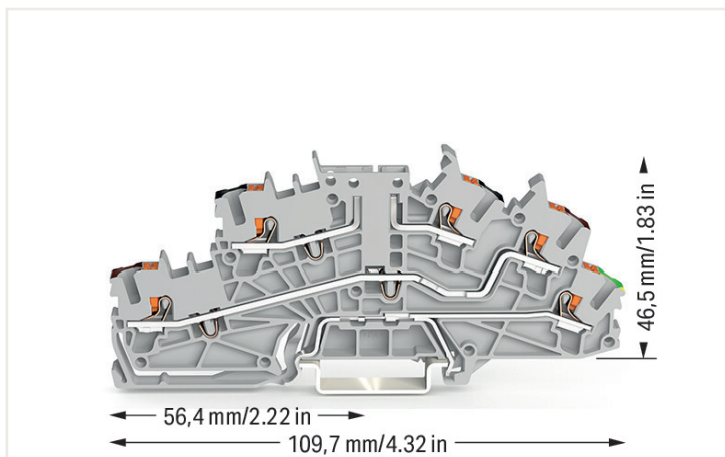


| : 2203-6643

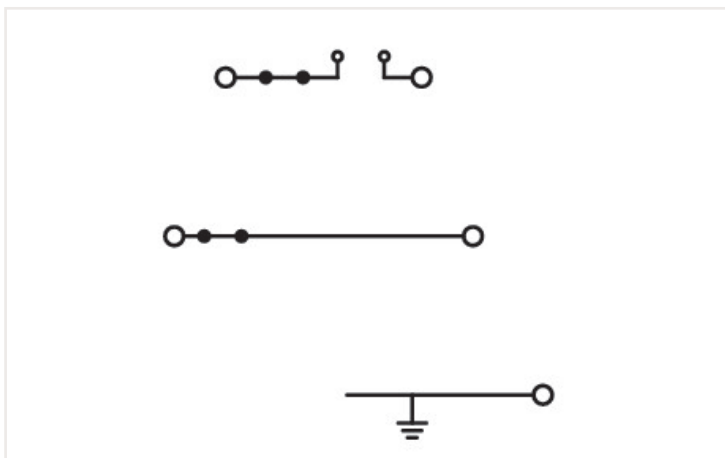
Multilevel installation terminal block; with push-button; 2.5 mm²; Carrier terminal block without knife; P2/P1/PE; black upper deck; brown middle deck; green-yellow lower deck; Push-in CAGE CLAMP®; 2,50 mm²; gray



<https://www.wago.com/2203-6643>



■ gray



Electrical data

Ratings per IEC/EN

Ratings (note)	Potential – ground
Nominal voltage (III/3)	250 V
Rated impulse voltage (III/3)	4 kV
Rated current	24 A
Note (rated current)	Maximum current depends on accessories used.
Legend (ratings)	(III / 3) ≙ Overvoltage category III / Pollution degree 3

Ratings per IEC/EN 2

Ratings (note) 2	Potential – ground
Rated voltage (III/3) 2	250 V
Rated surge voltage (III/3) 2	4 kV
Rated current 2	31 A

Ratings per IEC/EN 3

Ratings (note) 3	Potential – potential
Rated voltage (III/3) 3	400 V
Rated surge voltage (III/3) 3	6 kV
Rated current 3	24 A

Power loss

Power loss, per pole (potential)	0.6437 W
Rated current I _N for specified power loss	22 A
Resistance value for specified, current-dependent power loss	0.00133 Ω

Connection data

Total number of connection points	5
Total number of potentials	3
Number of levels	3

Connection 1

Connection technology	Push-in CAGE CLAMP®
Actuation type	Push-button
Connectable conductor materials	Copper
Nominal cross-section	2.5 mm²
Solid conductor	0.25 ... 4 mm² / 22 ... 12 AWG
Solid conductor; push-in termination	0.75 ... 4 mm² / 18 ... 12 AWG
Fine-stranded conductor	0.25 ... 4 mm² / 22 ... 12 AWG
Fine-stranded conductor; with insulated ferrule	0.25 ... 2.5 mm² / 22 ... 14 AWG
Fine-stranded conductor; with ferrule; push-in termination	1 ... 2.5 mm² / 18 ... 14 AWG
Note (conductor cross-section)	Depending on the conductor characteristic, a conductor with a smaller cross-section can also be inserted via push-in termination.
Strip length	10 ... 12 mm / 0.39 ... 0.47 inches
Wiring direction	Front-entry wiring

Physical data

Width	5.2 mm / 0.205 inches
Height	109.7 mm / 4.319 inches
Depth from upper-edge of DIN-rail	46.5 mm / 1.831 inches

Mechanical data

Potential marking	P2/P1/PE
Mounting type	DIN-35 rail
Marking level	Center/side marking

Material data

Note (material data)	Information on material data can be found here
Color	gray
Material group	I
Insulation material	Polyamide (PA66)
Flammability class per UL94	V0
Fire load	0.308 MJ
Weight	20.3 g

Environmental requirements

Processing temperature	-35 ... +85 °C
Continuous operating temperature	-60 ... +105 °C

Commercial data

ETIM 8.0	EC001329
ETIM 7.0	EC001329
PU (SPU)	50 Pieces
Packaging type	Box
Country of origin VKOrg Germany	DE
GTIN	4066966165371
Customs tariff number VKOrg Germany	8536901000

Approvals and certificates

Country specific Approvals



CCA DEKRA Certification B.V.	EN 60947	NTR NL 7923
CSA DEKRA Certification B.V.	C22.2	80093552
KEMA/KEUR DEKRA Certification B.V.	EN 60947	71-122696

UL-Approvals



UR Underwriters Laboratories Inc.	UL 1059	E 45172
-----------------------------------------	---------	---------

Downloads

Environmental Product Compliance

Compliance Search

Environmental Product
Compliance 2203-6643



Documentation

Additional Information

Technical Section

pdf
2142.18 KB



1 Compatible products

1.1 Required accessories

1.1.1 End plate

1.1.1.1 End plate



[: 2203-6692](#)

End and intermediate plate; 0.8 mm thick;
orange

[: 2203-6693](#)

End and intermediate plate; 1 mm thick;
only for use with fuse plugs; orange

[: 2203-6694](#)

End and intermediate plate; 1 mm thick;
orange

1.2 Optional accessories

1.2.1 DIN-rail

1.2.1.1 Mounting accessories



:210-196
Aluminum carrier rail; 35 x 8.2 mm; 1.6 mm thick; 2 m long; unslotted; similar to EN 60715; silver-colored



:210-198
Copper carrier rail; 35 x 15 mm; 2.3 mm thick; 2 m long; unslotted; according to EN 60715; copper-colored



:210-197
Steel carrier rail; 35 x 15 mm; 1.5 mm thick; 2 m long; slotted; similar to EN 60715; silver-colored



:210-114
Steel carrier rail; 35 x 15 mm; 1.5 mm thick; 2 m long; unslotted; similar to EN 60715; silver-colored



:210-118
Steel carrier rail; 35 x 15 mm; 2.3 mm thick; 2 m long; unslotted; according to EN 60715; silver-colored



:210-115
Steel carrier rail; 35 x 7.5 mm; 1 mm thick; 2 m long; slotted; according to EN 60715; "Hole width 18 mm; silver-colored



:210-112
Steel carrier rail; 35 x 7.5 mm; 1 mm thick; 2 m long; slotted; according to EN 60715; "Hole width 25 mm; silver-colored



:210-113
Steel carrier rail; 35 x 7.5 mm; 1 mm thick; 2 m long; unslotted; according to EN 60715; silver-colored

1.2.2 Ferrule

1.2.2.1 Ferrule



:216-241
Ferrule; Sleeve for 0.5 mm² / 20 AWG; insulated; electro-tin plated; electrolytic copper; gastight crimped; acc. to DIN 46228, Part 4/09.90; white



:216-242
Ferrule; Sleeve for 0.75 mm² / 18 AWG; insulated; electro-tin plated; electrolytic copper; gastight crimped; acc. to DIN 46228, Part 4/09.90; gray



:216-262
Ferrule; Sleeve for 0.75 mm² / 18 AWG; insulated; electro-tin plated; electrolytic copper; gastight crimped; acc. to DIN 46228, Part 4/09.90; gray



:216-243
Ferrule; Sleeve for 1 mm² / AWG 18; insulated; electro-tin plated; electrolytic copper; gastight crimped; acc. to DIN 46228, Part 4/09.90; red



:216-263
Ferrule; Sleeve for 1 mm² / AWG 18; insulated; electro-tin plated; electrolytic copper; gastight crimped; acc. to DIN 46228, Part 4/09.90; red



:216-244
Ferrule; Sleeve for 1.5 mm² / AWG 16; insulated; electro-tin plated; electrolytic copper; gastight crimped; acc. to DIN 46228, Part 4/09.90; black



:216-264
Ferrule; Sleeve for 1.5 mm² / AWG 16; insulated; electro-tin plated; electrolytic copper; gastight crimped; acc. to DIN 46228, Part 4/09.90; black



:216-246
Ferrule; Sleeve for 2.5 mm² / AWG 14; insulated; electro-tin plated; electrolytic copper; gastight crimped; acc. to DIN 46228, Part 4/09.90; blue



:216-266
Ferrule; Sleeve for 2.5 mm² / AWG 14; insulated; electro-tin plated; electrolytic copper; gastight crimped; acc. to DIN 46228, Part 4/09.90; blue

1.2.3 Installation

1.2.3.1 Mounting accessories



:2009-304
Busbar carrier; not suitable for use as end stop; for DIN 35 rail; 1.5 mm thick; blue



:2009-305
Busbar carrier; with end stop function and detachable separator plate; for DIN 35 rail; 7.5 mm thick; blue



:709-169
Cover carrier; Type 3; gray



:709-156
Cover; Type 3; suitable for cover carrier, type 3; 1 m long; transparent

1.2.4 Insulation stop

1.2.4.1 Insulation stop



:2002-171
Insulation stop; 0.25 - 0.5 mm²; 5 pieces/strip; light gray



:2002-172
Insulation stop; 0.75 - 1 mm²; 5 pieces/strip; dark gray

1.2.5 Jumper

1.2.5.1 Jumper

 : 2002-400 Continuous jumper; 2-way; insulated; light gray	 : 2002-423/000-006 Continuous jumper; from 1 to 3; insulated; blue	 : 2002-423 Continuous jumper; from 1 to 3; insulated; light gray	 : 2002-423/000-005 Continuous jumper; from 1 to 3; insulated; red
 : 2002-406/020-000 Delta jumper; insulated; light gray	 : 2002-410/000-006 Jumper; 10-way; insulated; blue	 : 2002-410 Jumper; 10-way; insulated; light gray	 : 2002-410/000-005 Jumper; 10-way; insulated; red
 : 2002-402/000-006 Jumper; 2-way; insulated; blue	 : 2002-402 Jumper; 2-way; insulated; light gray	 : 2002-402/000-005 Jumper; 2-way; insulated; red	 : 2002-403/000-006 Jumper; 3-way; insulated; blue
 : 2002-403 Jumper; 3-way; insulated; light gray	 : 2002-403/000-005 Jumper; 3-way; insulated; red	 : 2002-404/000-006 Jumper; 4-way; insulated; blue	 : 2002-404 Jumper; 4-way; insulated; light gray
 : 2002-404/000-005 Jumper; 4-way; insulated; red	 : 2002-405/000-006 Jumper; 5-way; insulated; blue	 : 2002-405 Jumper; 5-way; insulated; light gray	 : 2002-405/000-005 Jumper; 5-way; insulated; red
 : 2002-406/000-006 Jumper; 6-way; insulated; blue	 : 2002-406 Jumper; 6-way; insulated; light gray	 : 2002-406/000-005 Jumper; 6-way; insulated; red	 : 2002-407/000-006 Jumper; 7-way; insulated; blue
 : 2002-407 Jumper; 7-way; insulated; light gray	 : 2002-407/000-005 Jumper; 7-way; insulated; red	 : 2002-408/000-006 Jumper; 8-way; insulated; blue	 : 2002-408 Jumper; 8-way; insulated; light gray
 : 2002-408/000-005 Jumper; 8-way; insulated; red	 : 2002-409/000-006 Jumper; 9-way; insulated; blue	 : 2002-409 Jumper; 9-way; insulated; light gray	 : 2002-409/000-005 Jumper; 9-way; insulated; red
 : 2002-440 Jumper; from 1 to 10; insulated; light gray	 : 2002-433 Jumper; from 1 to 3; insulated; light gray	 : 2002-434 Jumper; from 1 to 4; insulated; light gray	 : 2002-435 Jumper; from 1 to 5; insulated; light gray
 : 2002-436 Jumper; from 1 to 6; insulated; light gray	 : 2002-437 Jumper; from 1 to 7; insulated; light gray	 : 2002-438 Jumper; from 1 to 8; insulated; light gray	 : 2002-439 Jumper; from 1 to 9; insulated; light gray
 : 2002-480 Staggered jumper; 10-way; insulated; light gray	 : 2002-481 Staggered jumper; 11-way; insulated; light gray	 : 2002-482 Staggered jumper; 12-way; insulated; light gray	 : 2002-473/011-000 Staggered jumper; 2-way; from 1 to 3; insulated; light gray
 : 2002-472 Staggered jumper; 2-way; insulated; light gray	 : 2002-473 Staggered jumper; 3-way; insulated; light gray	 : 2002-475/011-000 Staggered jumper; 3-way; insulated; light gray	 : 2002-474 Staggered jumper; 4-way; insulated; light gray
 : 2002-475 Staggered jumper; 5-way; insulated; light gray	 : 2002-476 Staggered jumper; 6-way; insulated; light gray	 : 2002-477 Staggered jumper; 7-way; insulated; light gray	 : 2002-478 Staggered jumper; 8-way; insulated; light gray
 : 2002-479 Staggered jumper; 9-way; insulated; light gray	 : 2002-477/011-000 Staggered jumper; insulated; light gray	 : 2002-479/011-000 Staggered jumper; insulated; light gray	 : 2002-481/011-000 Staggered jumper; insulated; light gray

1.2.5.1 Jumper



[: 2002-405/011-000](#)

Star point jumper; 3-way; insulated; light gray

[: 210-103](#)

Wire commoning chain; insulated; black

[: 210-123](#)

Wire commoning chain; insulated; blue

1.2.6 Marking

1.2.6.1 Group marker carrier



[: 2009-191](#)

Group marker carrier; gray

[: 2009-192](#)

Group marker carrier; gray

[: 2009-193](#)

Group marker carrier; gray

1.2.6.2 Marker

[: 2009-145/000-006](#)

Mini-WSB Inline; for Smart Printer; 1700 pieces on roll; stretchable 5 - 5.2 mm; plain; snap-on type; blue

[: 2009-145/000-007](#)

Mini-WSB Inline; for Smart Printer; 1700 pieces on roll; stretchable 5 - 5.2 mm; plain; snap-on type; gray

[: 2009-145/000-023](#)

Mini-WSB Inline; for Smart Printer; 1700 pieces on roll; stretchable 5 - 5.2 mm; plain; snap-on type; green

[: 2009-145/000-012](#)

Mini-WSB Inline; for Smart Printer; 1700 pieces on roll; stretchable 5 - 5.2 mm; plain; snap-on type; orange

[: 2009-145/000-005](#)

Mini-WSB Inline; for Smart Printer; 1700 pieces on roll; stretchable 5 - 5.2 mm; plain; snap-on type; red

[: 2009-145/000-024](#)

Mini-WSB Inline; for Smart Printer; 1700 pieces on roll; stretchable 5 - 5.2 mm; plain; snap-on type; violet

[: 2009-145](#)

Mini-WSB Inline; for Smart Printer; 1700 pieces on roll; stretchable 5 - 5.2 mm; plain; snap-on type; white

[: 2009-145/000-002](#)

Mini-WSB Inline; for Smart Printer; 1700 pieces on roll; stretchable 5 - 5.2 mm; plain; snap-on type; yellow



[: 248-501/000-006](#)

Mini-WSB marking card; as card; not stretchable; plain; snap-on type; blue



[: 248-501/000-007](#)

Mini-WSB marking card; as card; not stretchable; plain; snap-on type; gray



[: 248-501/000-023](#)

Mini-WSB marking card; as card; not stretchable; plain; snap-on type; green



[: 248-501/000-017](#)

Mini-WSB marking card; as card; not stretchable; plain; snap-on type; light green



[: 248-501/000-012](#)

Mini-WSB marking card; as card; not stretchable; plain; snap-on type; orange



[: 248-501/000-005](#)

Mini-WSB marking card; as card; not stretchable; plain; snap-on type; red



[: 248-501/000-024](#)

Mini-WSB marking card; as card; not stretchable; plain; snap-on type; violet



[: 248-501](#)

Mini-WSB marking card; as card; not stretchable; plain; snap-on type; white



[: 248-501/000-002](#)

Mini-WSB marking card; as card; not stretchable; plain; snap-on type; yellow



[: 793-5501/000-006](#)

WMB marking card; as card; for terminal block width 5 - 17.5 mm; stretchable 5 - 5.2 mm; plain; snap-on type; blue

[: 793-5501/000-014](#)

WMB marking card; as card; for terminal block width 5 - 17.5 mm; stretchable 5 - 5.2 mm; plain; snap-on type; brown

[: 793-5501/000-007](#)

WMB marking card; as card; for terminal block width 5 - 17.5 mm; stretchable 5 - 5.2 mm; plain; snap-on type; gray



[: 793-5501/000-023](#)

WMB marking card; as card; for terminal block width 5 - 17.5 mm; stretchable 5 - 5.2 mm; plain; snap-on type; green



[: 793-5501/000-017](#)

WMB marking card; as card; for terminal block width 5 - 17.5 mm; stretchable 5 - 5.2 mm; plain; snap-on type; light green

[: 793-5501/000-012](#)

WMB marking card; as card; for terminal block width 5 - 17.5 mm; stretchable 5 - 5.2 mm; plain; snap-on type; orange

[: 793-5501/000-005](#)

WMB marking card; as card; for terminal block width 5 - 17.5 mm; stretchable 5 - 5.2 mm; plain; snap-on type; red



[: 793-5501/000-024](#)

WMB marking card; as card; for terminal block width 5 - 17.5 mm; stretchable 5 - 5.2 mm; plain; snap-on type; violet



[: 793-5501](#)

WMB marking card; as card; for terminal block width 5 - 17.5 mm; stretchable 5 - 5.2 mm; plain; snap-on type; white

[: 793-5501/000-002](#)

WMB marking card; as card; for terminal block width 5 - 17.5 mm; stretchable 5 - 5.2 mm; plain; snap-on type; yellow

[: 793-501/000-006](#)

WMB marking card; as card; not stretchable; plain; snap-on type; blue



[: 793-501/000-007](#)

WMB marking card; as card; not stretchable; plain; snap-on type; gray



[: 793-501/000-023](#)

WMB marking card; as card; not stretchable; plain; snap-on type; green



[: 793-501/000-017](#)

WMB marking card; as card; not stretchable; plain; snap-on type; light green



[: 793-501/000-012](#)

WMB marking card; as card; not stretchable; plain; snap-on type; orange

1.2.6.2 Marker



: 793-501/000-005

WMB marking card; as card; not stretchable; plain; snap-on type; red



: 793-501/000-024

WMB marking card; as card; not stretchable; plain; snap-on type; violet



: 793-501

WMB marking card; as card; not stretchable; plain; snap-on type; white



: 793-501/000-002

WMB marking card; as card; not stretchable; plain; snap-on type; yellow



: 2009-115/000-006

WMB-Inline; for Smart Printer; 1500 pieces on roll; stretchable 5 - 5.2 mm; plain; snap-on type; blue



: 2009-115/000-007

WMB-Inline; for Smart Printer; 1500 pieces on roll; stretchable 5 - 5.2 mm; plain; snap-on type; gray



: 2009-115/000-023

WMB-Inline; for Smart Printer; 1500 pieces on roll; stretchable 5 - 5.2 mm; plain; snap-on type; green



: 2009-115/000-017

WMB-Inline; for Smart Printer; 1500 pieces on roll; stretchable 5 - 5.2 mm; plain; snap-on type; light green



: 2009-115/000-012

WMB-Inline; for Smart Printer; 1500 pieces on roll; stretchable 5 - 5.2 mm; plain; snap-on type; orange



: 2009-115/000-005

WMB-Inline; for Smart Printer; 1500 pieces on roll; stretchable 5 - 5.2 mm; plain; snap-on type; red



: 2009-115/000-024

WMB-Inline; for Smart Printer; 1500 pieces on roll; stretchable 5 - 5.2 mm; plain; snap-on type; violet



: 2009-115

WMB-Inline; for Smart Printer; 1500 pieces on roll; stretchable 5 - 5.2 mm; plain; snap-on type; white



: 2009-115/000-002

WMB-Inline; for Smart Printer; 1500 pieces on roll; stretchable 5 - 5.2 mm; plain; snap-on type; yellow



1.2.6.3 Marker carrier



: 2009-198

Adaptor; gray

1.2.6.4 Marking strip



: 2009-110

Marking strips; for Smart Printer; on reel; not stretchable; plain; snap-on type; white

1.2.7 Plug

1.2.7.1 Fuse plug



: 2003-911/1000-923

Double fuse plug; for 5 x 20 mm miniature metric fuse; with indicator lamp; 230 V; 10.4 mm wide; gray



: 2003-911

Double fuse plug; for 5 x 20 mm miniature metric fuse; without blown fuse indication; 10.4 mm wide; gray



: 2004-911/1000-541

Fuse plug; with pull-tab; for 5 x 20 mm miniature metric fuse; with indicator lamp; 12 - 30 V; 6.1 mm wide; gray



: 2004-911/1000-867

Fuse plug; with pull-tab; for 5 x 20 mm miniature metric fuse; with indicator lamp; 120 V; 6.1 mm wide; gray



: 2004-911/1000-836

Fuse plug; with pull-tab; for 5 x 20 mm miniature metric fuse; with indicator lamp; 230 V; 6.1 mm wide; gray



: 2004-911/1000-542

Fuse plug; with pull-tab; for 5 x 20 mm miniature metric fuse; with indicator lamp; 30 - 65 V; 6.1 mm wide; gray



: 2004-911

Fuse plug; with pull-tab; for miniature metric fuses 5 x 20 mm and 5 x 25 mm; without blown fuse indication; 6.1 mm wide; gray

1.2.8 Push-in type wire jumper

1.2.8.1 Jumper



:2009-414
Push-in type wire jumper; 1.5 mm²; insulated; 110 mm long; black



:2009-414/000-005
Push-in type wire jumper; 1.5 mm²; insulated; 110 mm long; black



:2009-416
Push-in type wire jumper; 1.5 mm²; insulated; 250 mm long; black



:2009-414/000-006
Push-in type wire jumper; insulated; 110 mm long; black



:2009-412
Push-in type wire jumper; insulated; 60 mm long; black

1.2.9 Test and measurement

1.2.9.1 Testing accessories



:2003-499
Test plug adapter N/L; for 2003-6641 and 2003-6640 Multilevel Installation Terminal Blocks; for vertical test slot; 2-pole; gray



:2003-500
Test plug adapter N; for 2003-6641 and 2003-6640 Multilevel Installation Terminal Blocks; for vertical test slot; 1-pole; gray



:2009-174
Test plug adapter; for 4 mm Ø test plugs; for testing TOPJOB®S rail-mounted terminal blocks; gray



:210-136
Test plug; 2 mm Ø; with 500 mm cable; red



:2009-182
Testing tap; for max. 2.5 mm²; tool-free connection for individual test wires 0.08 - 2.5 mm; gray

1.2.10 Tool

1.2.10.1 Operating tool



:210-658
Operating tool; Blade: 3.5 x 0.5 mm; with a partially insulated shaft; angled; short; multicoloured



:210-720
Operating tool; Blade: 3.5 x 0.5 mm; with a partially insulated shaft; multicoloured



:2009-309
Operating tool; Blades: 3.5 x 0.5 mm and 2.5 x 0.4 mm; for TOPJOB®S installation terminal blocks



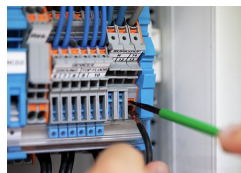
:2009-310
Operating tool; Blades: 3.5 x 0.5 mm and 5.5 x 0.8 mm; for TOPJOB®S installation terminal blocks; green

Installation notes

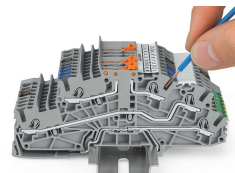
Conductor termination



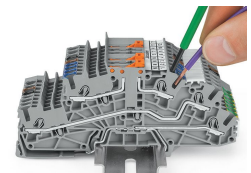
All conductor types at a glance



Conductor termination



Inserting a conductor via push-in termination.
Solid conductors with cross-sections from either one size above, or up to two sizes below, the rated cross-section can be simply pushed in – no tools needed.

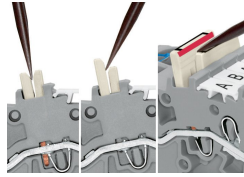


Inserting a conductor via operating tool. Connecting fine-stranded conductors without ferrules, or small cross-sectional conductors that cannot be pushed in, is performed similarly to the original CAGE CLAMP® – just use an operating tool.

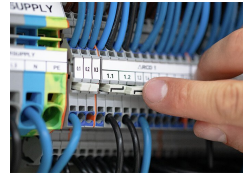
Commoning



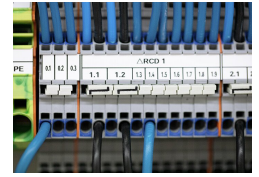
Commoning two potentials in one single jumper slot via extremely slim staggered jumpers.



Removing a staggered jumper: Insert the operating tool between the staggered jumpers, then lift up the jumper.

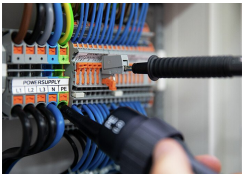


The 1-to-3 adjacent jumper for continuous commoning enables every other terminal block to be commoned. For example, positive and negative potentials can be accommodated alongside each other.



Adjacent Jumpers for Continuous Commoning (2002-400)

Testing



Testing