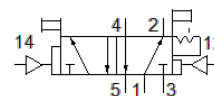


# pneumatic valve

## JDH-5-1/4-EX

Part number: 536039

FESTO



## Data sheet

| Feature   | Value   |
|---|---|
| Valve function                                    | 5/2 bistable-dominant   |
| Type of actuation                                 | pneumatic   |
| Width   | 30.5 mm   |
| Standard nominal flow rate                        | 1,100 l/min   |
| Operating pressure MPa                            | 0 ... 0.8 MPa   |
| Operating pressure                                | 0 ... 8 bar   |
| Design structure                                  | Poppet seat   |
| Protection class                                  | IP65  |
| CE mark (see declaration of conformity)           | to EU directive explosion protection (ATEX)                                 |
| UKCA marking (see declaration of conformity)      | To UK EX instructions   |
| ATEX category Gas                                 | II 2G   |
| ATEX category Dust                                | II 2D   |
| Explosion ignition protection type Gas            | Ex h IIC T4 Gb  |
| Explosion ignition protection type Dust           | Ex h IIIC T130°C Db   |
| Explosion-proof ambient temperature               | -10°C ≤ Ta ≤ +60°C  |
| Explosion protection certification outside the EU | EPL Db (GB)<br>EPL Gb (GB)  |
| Nominal size                                      | 7 mm  |
| Grid dimension                                    | 32 mm   |
| Exhaust-air function                              | throttleable  |
| Sealing principle                                 | soft  |
| Assembly position                                 | Any   |
| Type of piloting                                  | direct  |
| Pilot air supply                                  | external  |
| Flow direction                                    | non reversible  |
| Overlap   | Underlap  |
| Pilot pressure MPa                                | 0.23 ... 1 MPa  |
| Pilot pressure                                    | 2.3 ... 10 bar  |
| Max. switching frequency                          | 12 Hz   |
| Switching time reversal                           | 12 ms   |
| Operating medium                                  | Compressed air in accordance with ISO8573-1:2010 [7:4:4]                    |
| Note on operating and pilot medium                | Lubricated operation possible (subsequently required for further operation) |
| Corrosion resistance classification CRC           | 1 - Low corrosion stress  |
| Storage temperature                               | -20 ... 60 °C   |
| Medium temperature                                | -10 ... 60 °C   |
| Ambient temperature                               | -10 ... 60 °C   |
| Product weight                                    | 330 g   |
| Mounting type                                     | on manifold rail<br>with through hole<br>Optional                           |
| Scavenging orifice connection                     | M5  |
| Pilot air port 12                                 | G1/8  |
| Pilot air port 14                                 | G1/8  |
| Pneumatic connection, port 1                      | G1/4  |
| Pneumatic connection, port 2                      | G1/4  |

| Feature                      | Value              |
|------------------------------|--------------------|
| Pneumatic connection, port 3 | G1/4               |
| Pneumatic connection, port 4 | G1/4               |
| Pneumatic connection, port 5 | G1/4               |
| Materials note               | Conforms to RoHS   |
| Material seals               | NBR<br>TPE-U(PU)   |
| Material housing             | Aluminium die cast |