

# pneumatic valve

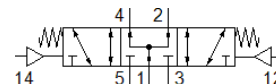
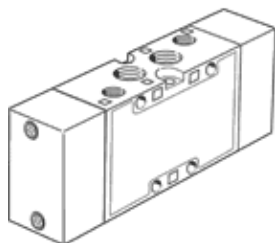
## VL-5/3B-1/4-B-EX

Part number: 536053  
Classic - do not use for new projects

FESTO

5/3-way function, centre position pressurised

Modern alternatives can be found by entering the first four characters of the type code in the search field.



## Data sheet

| Feature   | Value   |
|---|---|
| Valve function                                    | 5/3 pressurised   |
| Type of actuation                                 | pneumatic   |
| Width   | 32 mm   |
| Standard nominal flow rate                        | 1,600 l/min   |
| Operating pressure MPa                            | -0.09 ... 1 MPa   |
| Operating pressure                                | -0.9 ... 10 bar   |
| Design structure                                  | Piston slide  |
| Type of reset                                     | mechanical spring   |
| CE mark (see declaration of conformity)           | to EU directive explosion protection (ATEX)                                 |
| UKCA marking (see declaration of conformity)      | To UK EX instructions   |
| ATEX category Gas                                 | II 2G   |
| ATEX category Dust                                | II 2D   |
| Explosion ignition protection type Gas            | Ex h IIC T4 Gb  |
| Explosion ignition protection type Dust           | Ex h IIIC T130°C Db   |
| Explosion-proof ambient temperature               | -10°C ≤ Ta ≤ +60°C  |
| Explosion protection certification outside the EU | EPL Db (GB)<br>EPL Gb (GB)  |
| Nominal size                                      | 10 mm   |
| Grid dimension                                    | 33 mm   |
| Exhaust-air function                              | throttleable  |
| Sealing principle                                 | soft  |
| Assembly position                                 | Any   |
| Manual override                                   | None  |
| Type of piloting                                  | direct  |
| Pilot air supply                                  | external  |
| Flow direction                                    | reversible  |
| Overlap   | Positive overlap  |
| Pilot pressure MPa                                | 0.3 ... 1 MPa   |
| Pilot pressure                                    | 3 ... 10 bar  |
| b value   | 0.38  |
| C value   | 6.35 l/sbar   |
| Max. switching frequency                          | 3 Hz  |
| Switching time off                                | 26 ms   |
| Switching time on                                 | 6 ms  |
| Switching time reversal                           | 35 ms   |
| Operating medium                                  | Compressed air in accordance with ISO8573-1:2010 [7:4:4]                    |
| Note on operating and pilot medium                | Lubricated operation possible (subsequently required for further operation) |
| Corrosion resistance classification CRC           | 1 - Low corrosion stress  |
| Storage temperature                               | -40 ... 60 °C   |
| Medium temperature                                | -10 ... 60 °C   |
| Pilot medium                                      | Compressed air in accordance with ISO8573-1:2010 [7:4:4]                    |

| Feature                      | Value              |
|------------------------------|--------------------|
| Ambient temperature          | -10 ... 60 °C      |
| Product weight               | 375 g              |
| Mounting type                | with through hole  |
| Pilot air port 12            | G1/8               |
| Pilot air port 14            | G1/8               |
| Pneumatic connection, port 1 | G1/4               |
| Pneumatic connection, port 2 | G1/4               |
| Pneumatic connection, port 3 | G1/4               |
| Pneumatic connection, port 4 | G1/4               |
| Pneumatic connection, port 5 | G1/4               |
| Materials note               | Conforms to RoHS   |
| Material seals               | NBR                |
| Material housing             | Aluminium die cast |