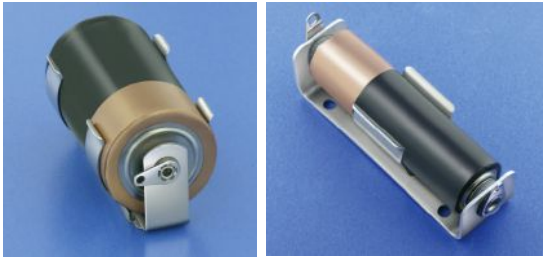


# RUGGED BATTERY HOLDERS



An established design that has gained wide acceptance for commercial and military applications. Batteries are held under constant spring tension assuring low contact resistance. Retainer clips are available to lock batteries in place and prevent shifting or loosening. Refer to page 22. Recommended for use where shock or severe vibration is encountered. Special fabrication for more than four batteries or variations from standard stock parts can be assembled to meet your requirements.

### SPECIFICATIONS:

**Base:** Stainless Steel, Phenolic, Aluminum  
**Contacts:** Brass, Nickel Plate  
**Solder Lugs:** Brass, Tin Plate

## STEEL



FIG. 1 STEEL



FIG. 2 STEEL, PHENOLIC BASE

## ALUMINUM



FIG. 1 ALUMINUM



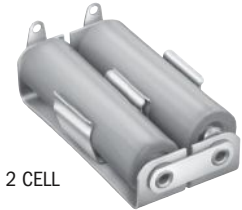
FIG. 2 ALUMINUM

## CONNECTED IN SERIES

Features pre-connected jumper strap insulated from the Aluminum base. Batteries held in series circuit without need of additional wiring.

### SPECIFICATIONS:

**Base:** Aluminum  
**Contacts:** Brass, Nickel Plate  
**Solder Lugs:** Brass, Tin Plated Jumper, Brass, Nickel Plate



2 CELL



3 CELL

CAT. NO.	HOLDS NO. OF CELLS
<b>"AA" CELL</b>	
146	1
147	2
148	3
<b>"C" CELL</b>	
149	1
150	2
151	3
<b>"D" CELL</b>	
152	1
153	2
158	3

## WITH PC LUGS

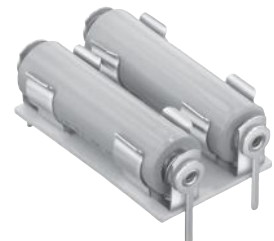
For printed circuitry we have standardized our most popular holders with PC Lugs. Choice of single or multiple holders "AA" assembled with PC solder lugs.

### SPECIFICATIONS:

**Base:** Steel, Phenolic or Aluminum  
**Contacts:** Brass, Nickel Plate  
**Solder Lugs:** Brass, Tin Plate Jumper, Brass, Nickel Plate



ALUMINUM



STEEL

ALUMINUM HOLDERS	HOLDS NO. OF CELLS	STEEL HOLDERS
CAT. NO.		CAT. NO.
<b>"AA" CELL</b>		
2222	1	2228
2223	2	2229
<b>"C" CELL</b>		
2224	1	2230
2225	2	2231
<b>"D" CELL</b>		
2226	1	2232
2227	2	2233
<b>"1/2AA" CELL</b>		
—	1	2103
<b>"2/3A" CELL</b>		
131	1	—
<b>DL223A - 6 Volt</b>		
224	1	—

\*Dual cell, Steel holders will have Phenolic base

STEEL HOLDERS		HOLDS NO. OF CELLS	FIG. NO.	ALUMINUM HOLDERS	
ONE CONTACT INSULATED	ALL CONTACTS INSULATED			ALL CONTACTS INSULATED	
CAT. NO.	CAT. NO.			CAT. NO.	
<b>"AAA" CELL</b>					
—	—	1	1	137	
—	—	2	1	138	
—	—	3	1	169	
—	—	4	1	170	
<b>"AA" CELL</b>					
1139	2139	1	1	139	
1189	2189	2	1	140	
—	2140*	2	2	189	
1191	2191	3	1	171	
—	2171*	3	2	—	
1194	2194	4	1	182	
—	2182*	4	2	192	
—	—	6	2	193	
<b>"C" CELL</b>					
1173	2173	1	1	173	
1185	2185	2	1	174	
—	2174*	2	2	185	
1195	2195	3	1	187	
—	2187*	3	2	—	
1198	2198	4	1	—	
—	2188*	4	2	196	
—	—	6	2	197	
<b>"D" CELL</b>					
1175	2175	1	1	175	
1186	2186	2	1	176	
—	2176*	2	2	186	
1199	2199	3	1	190	
—	2190*	3	2	—	
1162	2162	4	1	—	
—	2192*	4	2	200	
—	—	6	2	201	
<b>"1/2 AA" LITHIUM CELL</b>					
—	1103	1	1	—	
<b>LITHIUM "2/3 A" OR "CR123" BATTERY</b>					
—	—	1	1	132	