

## Thermistor Probe Temperature Data Logger with LCD Display

### OM-EL-USB-TP-LCD



- ✓ -40 to 125°C (-40 to 257°F)  
Probe Measurement Range
- ✓ User-Programmable Alarm Thresholds
- ✓ High Contrast LCD Display
- ✓ USB Interface for Set-Up and Data Download
- ✓ Status Indication via Red and Green LEDs
- ✓ Immediate, Delayed and Push-to-Start Logging
- ✓ Supplied Complete with Replaceable Internal Lithium Battery and Windows® Control Software

OM-EL-USB-TP-LCD  
shown actual size.

The OM-EL-USB-TP-LCD standalone data logger measures and stores up to 32,510 temperature readings from the supplied thermistor probe which is attached via the socket at the base of the unit. The user can easily set-up the logging rate and start-time, and download the stored data by plugging the data logger into a PC's USB port and running the included Windows software. Data can then be graphed, printed and exported to other applications.

The data logger features an LCD display and push-button which allows the user to cycle through the most recent, highest and lowest stored temperature readings. The data logger is supplied complete with a long-life lithium battery, which can typically allow logging for up to 6 months. The OM-EL-USB-TP-LCD is suitable for a wide variety of applications including high and low temperature monitoring, transportation, food processing, building and site monitoring and HVAC.

Windows software is supplied free of charge with each data logger. Easy to install and use, the control software runs under Windows XP, Vista, 7 and 8. The software is used to set-up the data logger as well as download, graph and export data to Excel. The software allows for the following parameters to be configured: logger name, temperature units (°C, °F), logging rate (1 sec, 10 sec, 30 sec, 1 min, 5 min, 30 min, 1 hr, 6 hr, 12 hr), high and low alarms, start mode (immediate, delayed and push-to-start logging), display mode (display off, on for 30 seconds after button press, or permanently on) and data rollover (allows unlimited logging periods by overwriting the oldest data when the memory is full).

### Thermistor Probe

The probe supplied with the OM-EL-USB-TP-LCD uses a precision thermistor to sense the temperature. The probe length may be extended by the use of a suitable extension cable (use twisted pair with high quality 3.5 mm jack socket/plugs for best results).

### SPECIFICATIONS

#### Probe Temperature Measurement Range:

-40 to 125°C (-40 to 257°F)

**Resolution (Internal and Displayed):** 0.5°C (1.0°F)

**Accuracy (Data Logger Error @ 25°C):** ±0.1°C

(±0.2°F) typical (does not include thermistor probe error)

**Operating Temperature Range (Data Logger):**

-10 to 40°C (-14 to 104°F)

**Memory:** 32,510 readings

**Memory Wrap Around (Rollover):** Yes

(software selectable)

**Logging Interval:** 1 sec, 10 sec, 30 sec, 1 min, 5 min, 30 min, 1 hr, 6 hr, 12 hr

**Software:** Windows XP/Vista/7 and 8 (32- and 64-bit)

**Alarm Thresholds:** High/low alarm thresholds for temperature (software selectable)

**Start Mode:** Immediate, delayed and push-to-start logging (software selectable)

**Status Indicators (LEDs):** Red and green LEDs.

The first LED flashes red to indicate that the OM-EL-USB-TP-LCD is in an alarm condition (logged temperature has exceeded a high or low alarm level). The second LED flashes green to indicate that the OM-EL-USB-TP-LCD is logging normally and is not in an alarm condition.

**Power:** 1/2 "AA", 3.6V lithium battery (included)

**Battery Life:** 6 months typical at 25°C (77°F)  
(depends on sample rate, ambient temperature and LCD use)

**Dimensions:**

**Data Logger:** See dimensional drawing below  
**Standard Thermistor Probe**

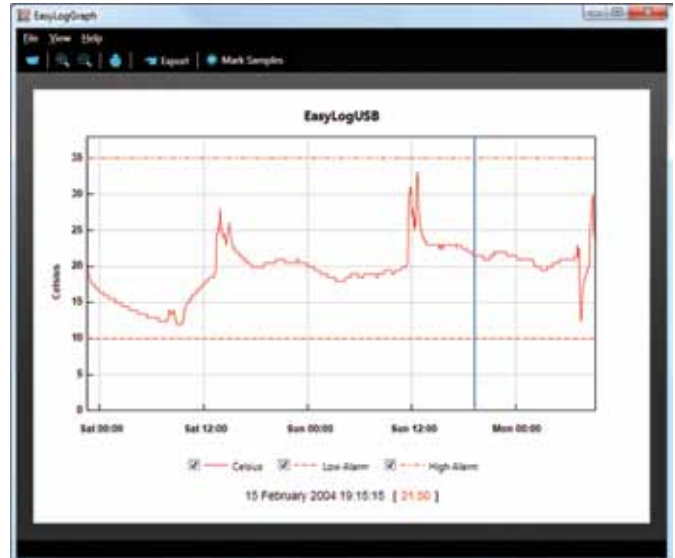
**Cable:** 1 m (3')

**Probe Tip:** Stainless steel, 25 L x 5 mm dia (1 x 3/16")

**Weight:** 45 g (1.6 oz)



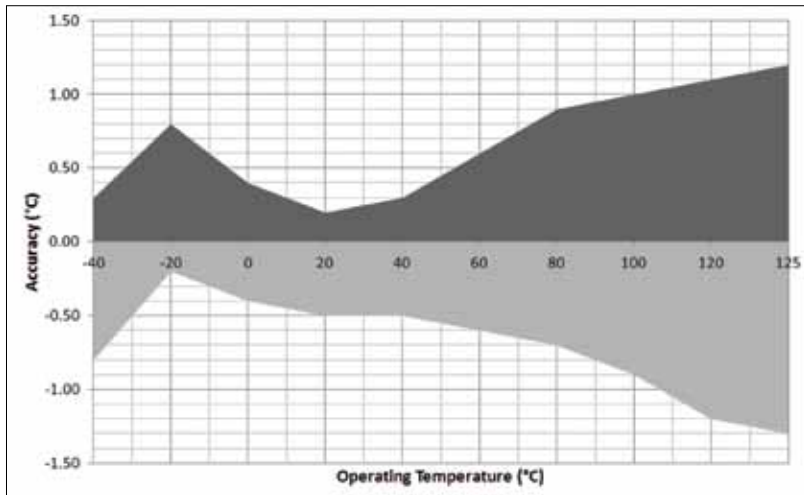
OMEGACARE<sup>SM</sup> extended warranty program is available for models shown on this page. Ask your sales representative for full details when placing an order. OMEGACARE<sup>SM</sup> covers parts, labor and equivalent loaners.



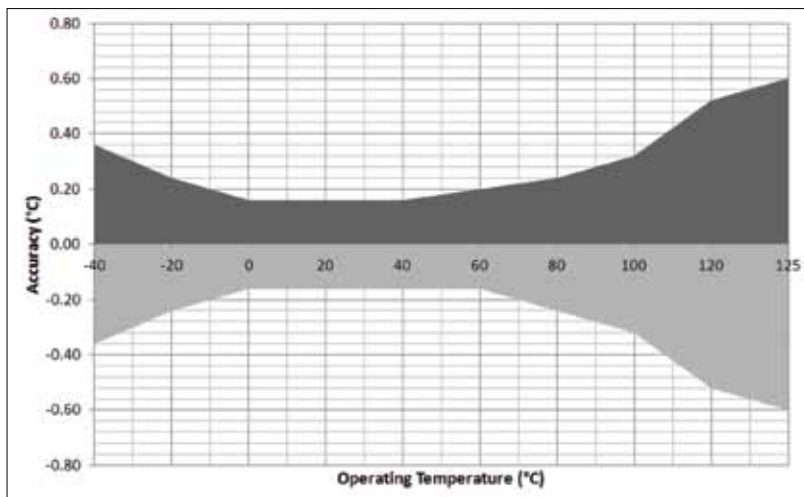
Windows control software is included.



## Thermistor Probe Measurement Accuracy



OM-EL-PROBE-TP-2-1M Type 2 Standard Accuracy Thermistor Probe (included with OM-EL-USB-TP-LCD)



OM-EL-PROBE-TP-A-3M Type A High Accuracy Thermistor Probe (included with OM-EL-USB-TP-LCD-PLUS)

### To Order

Model No.	Description
OM-EL-USB-TP-LCD	Thermistor probe temperature data logger with LCD display (includes Type 2 standard accuracy thermistor probe)
OM-EL-USB-TP-LCD-PLUS	Thermistor probe temperature data logger with LCD display (includes Type A high accuracy thermistor probe)

### Accessories

Model No.	Description
OM-EL-BATT	Replacement 3.6V lithium battery
OM-EL-PROBE-TP-2-1M	Spare standard thermistor probe, 1 m (3') cable
OM-EL-PROBE-TP-A-3M	Spare high accuracy thermistor probe, 3 m (10') cable
OM-EL-PROBE-TP-A-GLY-3M	Optional high accuracy thermistor probe (in sealed glycol filled chamber for temperature stabilization) 3 m (10') cable
OM-EL-PROBE-EXT-CAB-1.5M	Thermistor probe extension cable, 1.5 m (5')
OM-EL-PROBE-EXT-CAB-5M	Thermistor probe extension cable, 5 m (16.5')
OM-EL-PROBE-EXT-CAB-10M	Thermistor probe extension cable, 10 m (33')

Comes complete with Windows software and operator's manual on CD, protective cap, mounting bracket, 3.6V lithium battery and standard thermistor probe.

**Ordering Example:** OM-EL-USB-TP-LCD thermistor probe temperature data logger with LCD display and OCW-1, OMEGACARE<sup>SM</sup> extends standard 1-year warranty to a total of 2 years.