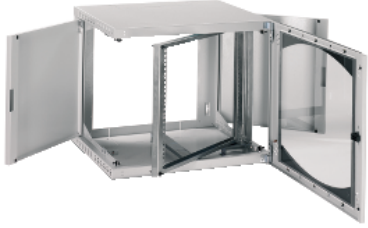


# Product data sheet

Specifications



## Wall-Mounted Open Box 9U W600 D500 Swing 19" Glazed Door R7035

NSYOPB9U5P

### Main

|                             |                                                                                                                                       |
|-----------------------------|---------------------------------------------------------------------------------------------------------------------------------------|
| Range                       | Actassi                                                                                                                               |
| Product name                | Actassi OPB                                                                                                                           |
| Product or component type   | 19" enclosure                                                                                                                         |
| Device application          | Cabling                                                                                                                               |
| Applications                | To protect network connectivity equipment<br>To mount 19" equipment<br>To facilitate maintenance                                      |
| Enclosure type              | Open box                                                                                                                              |
| Support equipment           | 1 x swing 19" uprights recessed of 120 mm from the front (pitch 25 mm)                                                                |
| Front face                  | Glazed door                                                                                                                           |
| Door type                   | Front glazed door - with 1 point locking system (key: 333) - reversible opening at 180 °                                              |
| Accessibility for operation | Side<br>Rear<br>Front                                                                                                                 |
| Removable parts             | Front door removable toolless<br>Top blanking plate<br>Bottom blanking plate<br>Rear blanking plate<br>Side panels removable toolless |
| Colour                      | Light grey (RAL 7035)                                                                                                                 |

### Complementary

|                    |                                                                                                               |
|--------------------|---------------------------------------------------------------------------------------------------------------|
| Device composition | 3 x cable entries<br>1 x glazed door front<br>2 x panels side<br>2 x 19" uprights front<br>1 x open structure |
| Load rating        | 3 kg by unit<br>25 kg static                                                                                  |
| Back face          | Cut-out                                                                                                       |
| Side face          | Panel                                                                                                         |
| Number of cut-out  | 1 cut-outside<br>1 cut-outbottom<br>1 cut-outtop                                                              |
| Installation mode  | Wall mounted                                                                                                  |
| Material           | Sheet steel: structure<br>Sheet steel: door<br>Sekurit glass: door<br>Galvanized steel: upright               |

|                     |                        |
|---------------------|------------------------|
| Surface finish      | Epoxy-polyester powder |
| Width               | 600 mm                 |
| Height              | 515 mm                 |
| Depth               | 500 mm                 |
| Net weight          | 22 kg                  |
| Number of rack unit | 9U                     |
| Targeted region     | Europe                 |

## Environment

|                         |                              |
|-------------------------|------------------------------|
| IK degree of protection | IK08 conforming to IEC 62262 |
| IP degree of protection | IP20 conforming to IEC 60529 |
| Standards               | IEC 60297-3-100<br>EIA-310D  |

## Packing Units

|                              |          |
|------------------------------|----------|
| Unit Type of Package 1       | PCE      |
| Number of Units in Package 1 | 1        |
| Package 1 Weight             | 22.0 kg  |
| Package 1 Height             | 55.0 cm  |
| Package 1 width              | 57.0 cm  |
| Package 1 Length             | 63.0 cm  |
| Unit Type of Package 2       | P12      |
| Number of Units in Package 2 | 6        |
| Package 2 Weight             | 160.0 kg |
| Package 2 Height             | 187.0 cm |
| Package 2 width              | 80.0 cm  |
| Package 2 Length             | 120.0 cm |

## Offer Sustainability

|                            |                                                                                                                       |
|----------------------------|-----------------------------------------------------------------------------------------------------------------------|
| Sustainable offer status   | Green Premium product                                                                                                 |
| REACH Regulation           | <a href="#">REACH Declaration</a>                                                                                     |
| REACH free of SVHC         | Yes                                                                                                                   |
| EU RoHS Directive          | Pro-active compliance (Product out of EU RoHS legal scope)<br><a href="#">EU RoHS Declaration</a>                     |
| Mercury free               | Yes                                                                                                                   |
| RoHS exemption information | <a href="#">Yes</a>                                                                                                   |
| China RoHS Regulation      | <a href="#">China RoHS declaration</a><br>Product out of China RoHS scope. Substance declaration for your information |
| Environmental Disclosure   | <a href="#">Product Environmental Profile</a>                                                                         |

## Contractual warranty

|          |           |
|----------|-----------|
| Warranty | 18 months |
|----------|-----------|