



MZM 100 B ST2-SD2PREM-A-DU

- Actuator monitored
- Connector M12, 8-pole
- Power to lock
- serial diagnostic output
- Automatic latching
- Solenoid interlocks (for the protection of man) with innovating and unique operating principle
- 40 mm x 179 mm x 40 mm
- Electronic contact-free, coded system
- Thermoplastic enclosure
- Max. length of the sensor chain 200 m
- 3 LEDs to show operating conditions
- Sensor technology permits an offset between actuator and interlock of ± 5 mm vertically and ± 3 mm horizontally
- Intelligent diagnosis
- Self-monitoring series-wiring
- Patented

Data

Ordering data

Product type description	MZM 100 B ST2-SD2PREM-A-DU
Article number (order number)	103046571
EAN (European Article Number)	4030661568331

Approvals - Standards

Certificates	TÜV cULus EAC
--------------	---------------------

General data

Standards	EN ISO 13849-1 EN ISO 14119 EN IEC 60947-5-3 EN IEC 61508
Coding	Universal coding
Coding level according to EN ISO 14119	Low
Working principle	inductive
Enclosure material	Glass-fibre, reinforced thermoplastic
Time to readiness, maximum	4,000 ms
Reaction time, maximum	150 ms
Duration of risk, maximum	150 ms

General data - Features

Power to lock	Yes
Actuator monitored	Yes
Serial diagnostics	Yes
Latching	Yes
Short circuit detection	Yes
Cross-circuit detection	Yes
Series-wiring	Yes
Safety functions	Yes
Integral system diagnostics, status	Yes
Number of safety contacts	2
Number of series-wiring of sensors	31

Safety classification

Standards	EN ISO 13849-1 EN IEC 61508
-----------	--------------------------------

Safety classification - Interlocking function

Performance Level, up to	e
Category	4
PFH value	3.54×10^{-9} /h
Safety Integrity Level (SIL), suitable for applications in	3
Mission time	20 Year(s)

Mechanical data

Mechanical life, minimum	1,000,000 Operations
Note (Mechanical life)	Actuating speed 0.5 m/s Operations for door weights ≤ 5 kg
Holding force, typically	750 N
Holding force, guaranteed	500 N
Latching force, minimum	45 N
Latching force, maximum	115 N

Mechanical data - Connection technique

Termination	Connector M12, 8-pole
-------------	-----------------------

Mechanical data - Dimensions

Length of sensor	40 mm
Width of sensor	40 mm
Height of sensor	179 mm

Ambient conditions

Degree of protection	IP65 IP67
Ambient temperature, minimum	-25 °C

Ambient temperature, maximum	+55 °C
Storage and transport temperature, minimum	-25 °C
Storage and transport temperature, maximum	+70 °C
Relative humidity, minimum	30 %
Relative humidity, maximum	95 %
Note (Relative humidity)	non-condensing non-icing
Resistance to vibration to EN 60068-2-6	10 ... 150 Hz, amplitude 0.35 mm
Resistance to shock	30 g / 11 ms
Protection class	III

Ambient conditions - Insulation values

Rated insulation voltage U_i	32 VDC
Rated impulse withstand voltage U_{imp}	0.8 kV
Overvoltage category	III
Degree of pollution to VDE 0100	3

Electrical data

Operating voltage, minimum	20.4 VDC
Operating voltage, maximum	26.4 VDC
No-load supply current I_0 , maximum	600 mA
Operating current	50 mA
Required rated short-circuit current to EN 60947-5-1	100 A
Note	Cable length and cable section alter the voltage drop depending on the output current
Switching frequency, maximum	1 Hz

Electrical data - Magnet control

Switching thresholds	-3 V ... 5 V (Low) 15 V ... 30 V (High)
Classification ZVEI CB24I, Sink	C0
Classification ZVEI CB24I, Source	C1 C2 C3

Electrical data - Safety digital inputs

Switching thresholds	-3 V ... 5 V (Low) 15 V ... 30 V (High)
Classification ZVEI CB24I, Sink	C1
Classification ZVEI CB24I, Source	C1 C2 C3

Electrical data - Safety digital outputs

Rated operating current (safety outputs)	250 mA
Voltage drop U_d , maximum	1 V
Leakage current I_p , maximum	0.5 mA
Voltage, Utilisation category DC-13	24 VDC
Current, Utilisation category DC-13	0.25 A
Classification ZVEI CB24I, Source	C1
Classification ZVEI CB24I, Sink	C1

Electrical data - Diagnostic outputs

Voltage drop U_d , maximum	2 V
Voltage, Utilisation category DC-13	24 VDC

Current, Utilisation category 0.05 A
DC-13

Status indication

Note (LED switching conditions display) Operating condition: LED green
Error / functional defect: LED red
Supply voltage UB: LED green

Pin assignment

PIN 1	A1 Supply voltage UB
PIN 2	X1 Safety input 1
PIN 3	A2 GND
PIN 4	Y1 Safety output 1
PIN 5	OUT serial diagnostic output
PIN 6	X2 Safety input 2
PIN 7	Y2 Safety output 2
PIN 8	IN serial diagnostic input

Scope of delivery

Scope of delivery Actuators must be ordered separately.

Accessory

Recommendation (actuator) MZM 100-B1.1

Note

Note (General) As long as the actuating unit is applied to the solenoid interlock, the unlocked safety guard can be relocked. In this case, the safety outputs are re-enabled, so that the safety guard must not be opened.

Ordering code

Product type description:

MZM 100(1)(2)(3)(4)(5)

(1)	
without	Solenoid interlock monitored
B	Actuator monitored
(2)	
ST2	Connector plug M12, 8-pole
ST	Connector plug M23, 8+1-pole
(3)	
1P2P	1 p-type diagnostic output and 2 p-type safety outputs (only in connection with "Solenoid interlock monitored")
1P2PW	Similar to -1P2P, combined diagnostic signal: guard door closed and solenoid interlock locked (only in connection with "Solenoid interlock monitored")
1P2PW2	Similar to -1P2P, combined diagnostic signal: guard door closed and can be locked (only in connection with "Actuator monitored")
SD2P	serial diagnostic output and 2 p-type safety outputs
(4)	
without	without latching (only in connection with "Solenoid interlock monitored")
R	electrical latching force, typically 30 N
RE	electrically adjustable latching force 30 ... 100 N
(5)	
M	permanent magnet, typically 15 N

Pictures

Product picture (catalogue individual photo)

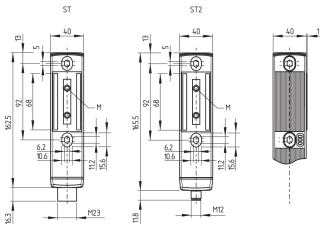


ID: kmzm1f25

| 273.6 kB | .jpg | 352.778 x 477.661 mm - 1000 x 1354 px - 72 dpi

| 22.1 kB | .png | 74.083 x 100.189 mm - 210 x 284 px - 72 dpi

Dimensional drawing basic component



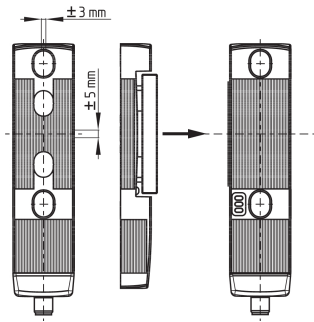
ID: 1mzm1g14

| 20.7 kB | .swf |

| 5.2 kB | .png | 74.083 x 50.8 mm - 210 x 144 px - 72 dpi

| 160.8 kB | .jpg | 352.778 x 242.358 mm - 1000 x 687 px - 72 dpi

Dimensional drawing miscellaneous

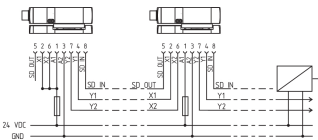


ID: 1mzm1g15

| 12.9 kB | .swf |

| 290.8 kB | .jpg | 352.425 x 362.656 mm - 999 x 1028 px - 72 dpi

Wiring example

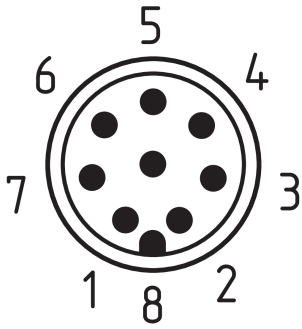


ID: kmzm1l04

| 38.1 kB | .cdr |

| 83.1 kB | .jpg | 352.778 x 144.639 mm - 1000 x 410 px - 72 dpi

Contact arrangement



ID: km23-k8b

| 5.3 kB | .png | 73.731 x 79.728 mm - 209 x 226 px - 72 dpi

| 139.8 kB | .jpg | 352.778 x 380.647 mm - 1000 x 1079 px - 72 dpi

Schmersal Ltd., Sparrowhawk Close, WR14 1GL Malvern

The details and data referred to have been carefully checked. Images may diverge from original. Further technical data can be found in the manual. Technical amendments and errors possible.

Generated on: 30/09/2022, 06:54