

2400-2500 MHz 12 dBi Gain MIMO Omnidirectional Antenna - Type N Female Connector, PVC Radome

HG2412DPU



Features

- All weather operation
- Includes heavy duty steel mast mounting brackets
- PVC radome
- Integral two N-Female connector
- 2x2 MIMO capable
- 360° Omnidirectional Pattern

Applications

- 2400 Band Operation
- Point to Multipoint and Non Line of Sight (NLOS) Applications

- 12 dBi gain

Description

The L-com HG2412DPU is a high performance LTE outdoor omnidirectional antenna specifically designed for cellular networks. L-com's HG2412DPU has 12 dBi gain and can be used to broadcast Cellular LTE signals. The HG2412DPU operates from 2400 to 2500 MHz which is ideal for 4G, LTE, PCS, and MIMO 2x2 applications. The Multi-Band design of the L-com HG2412DPU antenna eliminates the need to purchase different antennas for each frequency. This simplifies installations since the same antenna can be used for a wide array of telecommunication applications where wide coverage is desired.

The HG2412DPU from L-com has omnidirectional patterns with vertical/horizontal polarization and features Type N connectors. The Type N connectorized HG2412DPU antenna from L-com is designed specifically for outdoor operation and is ideal for point to multipoint use in large open areas such as base station installations or large campuses. The included mounting bracket and hardware makes this antenna very easy to install. This LTE outdoor omnidirectional antenna just like our wide selection of superior quality RF parts, ship same day. Contact our knowledgeable and friendly technical support and sales staff for your answers on antennas or other L-com products.

Configuration

Design	Omni
Band Type	Single
Radiation Pattern	Directional
Polarization	Vertical/Horizontal
Connector Type	N Female
Number of Ports	2
Lightning Protection	DC Ground

Electrical Specifications

Description	Minimum	Typical	Maximum	Units
Frequency Range	2,400		2,500	MHz
Input VSWR		1.5:1		
Impedance		50		Ohms
Gain			12	
Input Power			50	Watts

Click the following link (or enter part number in "SEARCH" on website) to obtain additional part information including price, inventory and certifications:
[2400-2500 MHz 12 dBi MIMO Omni Antenna, 2 x N Female, PVC radome HG2412DPU](#)

2400-2500 MHz 12 dBi Gain MIMO Omnidirectional Antenna - Type N Female Connector, PVC Radome

HG2412DPU



Mechanical Specifications

Radome Material	PVC
Size	
Length	45.66929 in [116 cm]
Width	2.99213 in [76 mm]
Height	2.99213 in [76 mm]
Mounting Mast Diameter	1.18 to 2.36 in [29.97 to 59.94 mm]
Weight	4.19 lbs [1.9 kg]

Environmental Specifications

Temperature	
Operating Range	-40 to +60 deg C
Wind Survivability	134.216 MPH [216 KPH]

Compliance Certifications (see [product page](#) for current document)

Plotted and Other Data

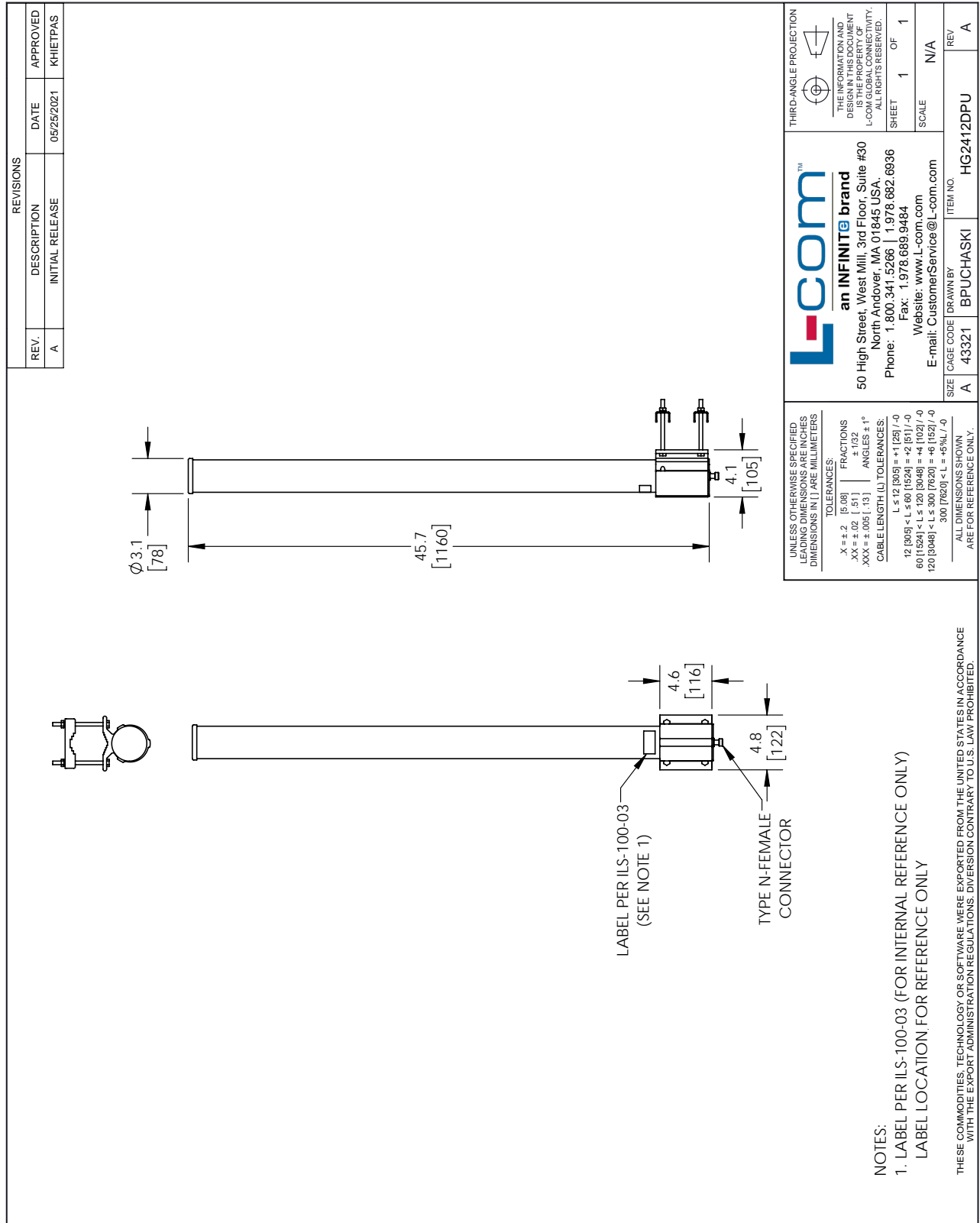
Notes:

2400-2500 MHz 12 dBi Gain MIMO Omnidirectional Antenna - Type N Female Connector, PVC Radome from L-com has same day shipment for domestic and International orders. Our portfolio includes coaxial cable assemblies, connectors, adapters and custom products as well as lightning and surge protectors, NEMA rated enclosures, and an RF product line which includes antennas, amplifiers, passive, and active components.

The information contained within this document is accurate to the best of our knowledge and representative of the part described herein. It may be necessary to make modifications to the part and/or the documentation of the part in order to impliment improvements. L-com reserves the right to make such changes as required. Unless otherwise stated, all specifications are nominal. L-com does not make any representation or warranty regarding the suitability of the part described herein for any particular purpose, and L-com does not assume liability arising out of the use of any part or document.

2400-2500 MHz 12 dBi Gain MIMO Omnidirectional Antenna - Type N Female Connector, PVC Radome

L-com CAD Drawing



T-Rev.D