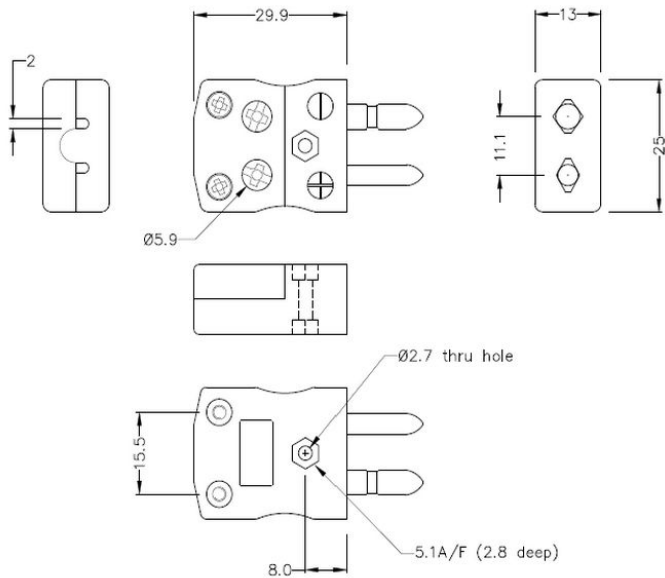
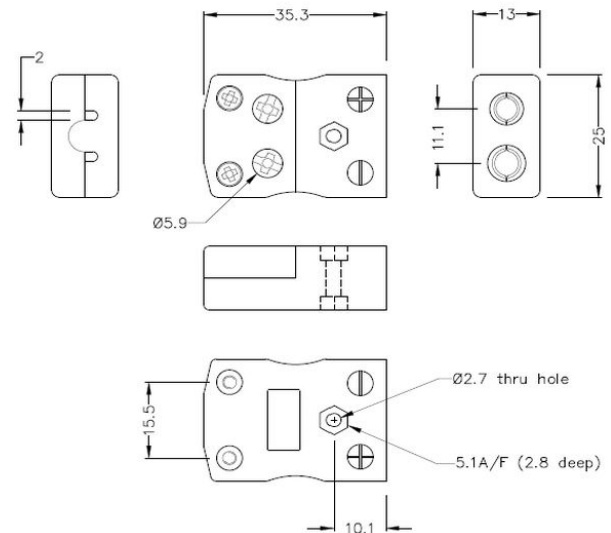


# Standard Quick Wire Thermocouple Connector Plug & Socket IS-T-MQ+FQ Type T IEC



**Standard in-line Plug - Quick Wire**  
(dimensions in mm)



**Standard in-line Socket - Quick Wire**  
(dimensions in mm)

|                            |  |
|----------------------------|--|
| <b>Product Code</b>        | XF-1729-FAR  |
| <b>General Description</b> | Easy 'jab-in' connection for rapid termination, contacts are polarised to prevent incorrect connection |
| <b>Thermocouple Type</b>   | T IEC  |
| <b>Connector Size</b>      | Standard   |
| <b>Connector Type</b>      | Quick Wire Plug & Socket   |
| <b>Colour</b>              | Brown  |
| <b>Max. Temperature</b>    | 220°C  |
| <b>Pins</b>                | Solid Round Pins   |
| <b>+Positive Contact</b>   | Copper   |

|                          |                        |
|--------------------------|------------------------|
| <b>-Negative Contact</b> | Copper Nickel          |
| <b>Standards Met</b>     | BS EN 50212:1997. RoHS |

