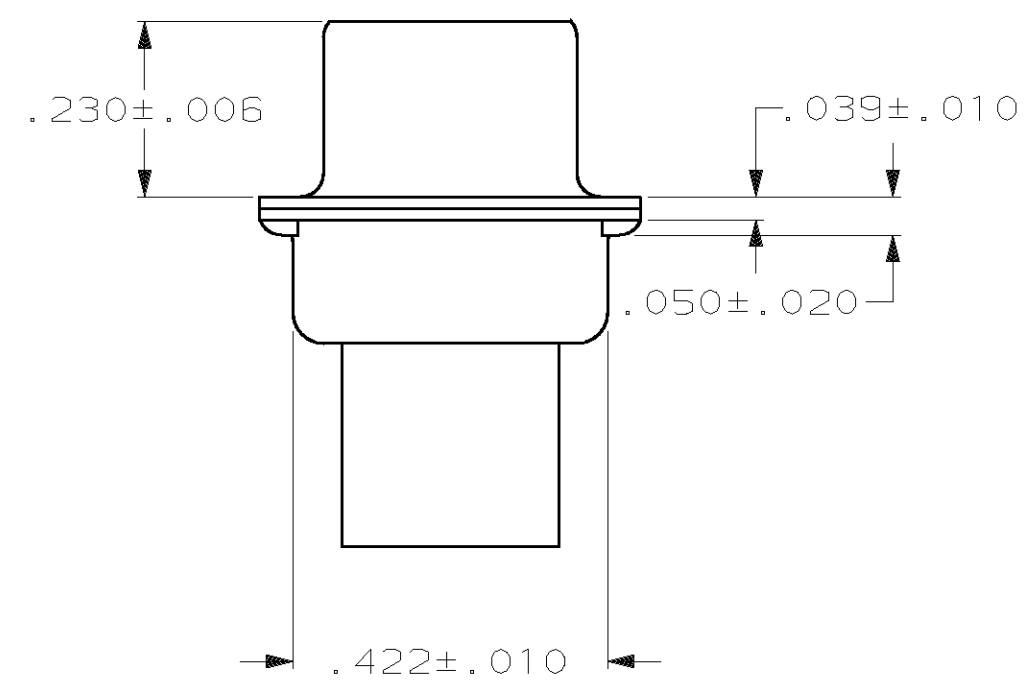
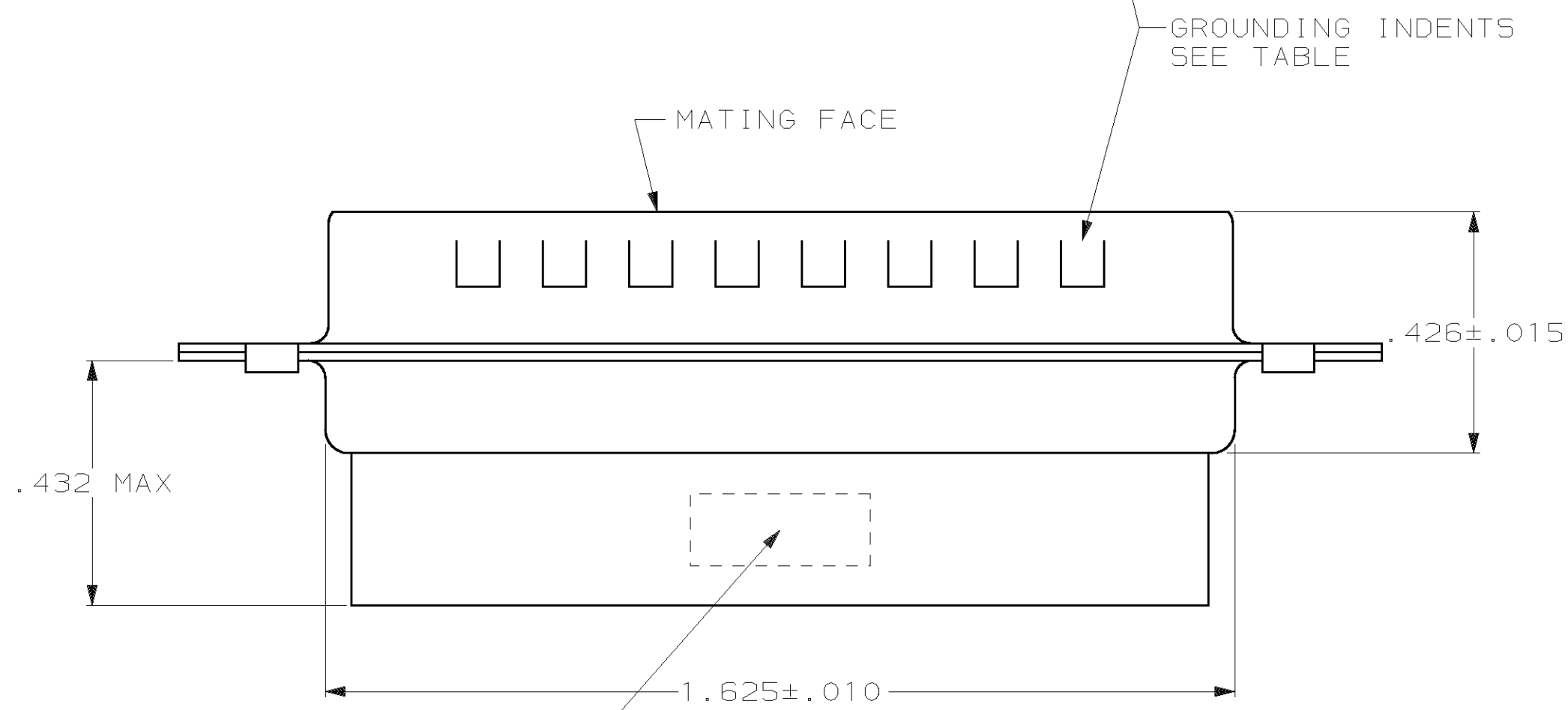
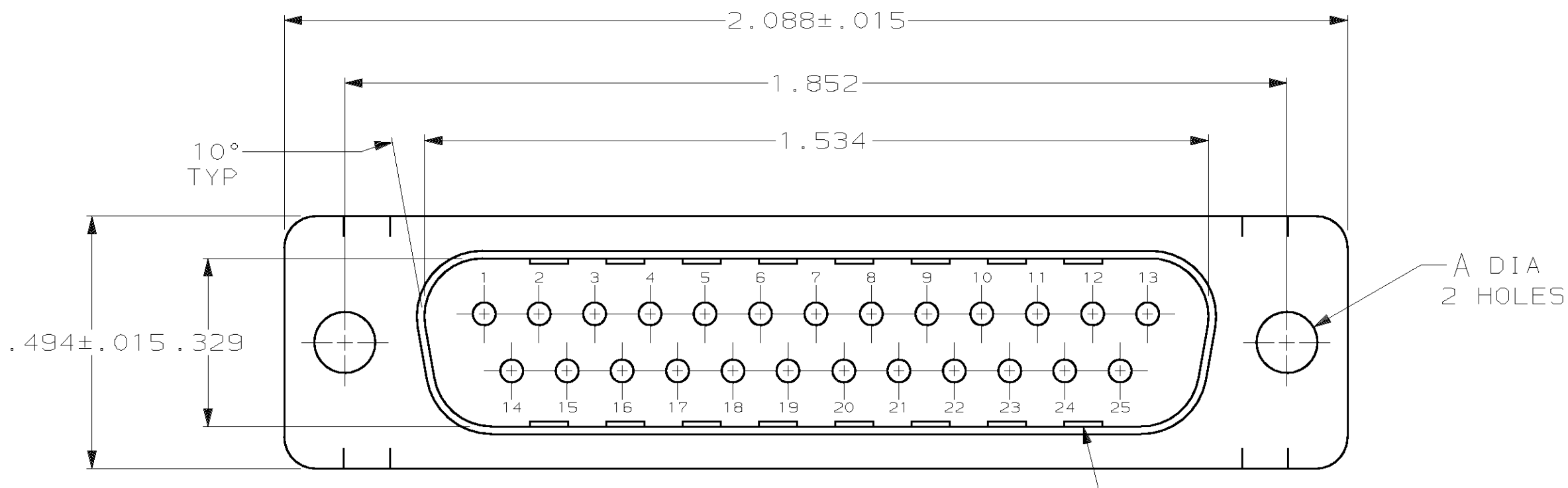


THIS DRAWING IS UNPUBLISHED. RELEASED FOR PUBLICATION, 19 .  
 © COPYRIGHT 19 BY AMP INCORPORATED. ALL INTERNATIONAL RIGHTS RESERVED.

LOC	DIST	P	F	ZONE	LTR	DESCRIPTION	DATE	APPD
GP	00				B2	REV. & REDRAWN ECN-1119	7-18-85	SW
					C	REV PER ECN BD6802	12/03/92	RM
					C1	ADDED -6 PER NPR 4855	07/07/93	SB
					D	OBS -4 PER EC 0020-724-95	08 MAR 96	JCS
					E	OBS -3 PER EC 0020-524-96	23 AUG 96	LF
					F	OBS -6 PER EC 0420-141-96	17 SEPT 96	SB
					G	REV PER EC 0513-0196-03	29 JUL 03	JR



"AMP", PART NO. & DATE CODE, MARKED IN AREA INDICATED, ON FAR SIDE

- CONNECTOR ACCEPTS SIZE 20 DF PIN CONTACTS, RETENTION TINES ARE AN INTEGRAL PART OF INSERT.
- CONNECTOR COMPLIES WITH 108-40005 WHERE APPLICABLE.
- NYLON, FLAME RETARDANT, 94V-0 RATED, GLASS FILLED, BLACK.
- STEEL PER ASTM A109.
- TIN OR TIN-LEAD PLATED OVER COPPER UNDERPLATE.
- TIN PLATED OVER COPPER UNDERPLATE.

	STANDARD	△6	NO	.120	207464-7
OBSOLETE	SMALL PACK	△6	YES	.120	207464-6
OBSOLETE	STANDARD	△5	YES	.154	207464-4
OBSOLETE	STANDARD	△5	NO	.154	207464-3
	STANDARD	△6	YES	.120	207464-2
	STANDARD	△5	NO	.120	207464-1
	PACKAGING TYPE	SHELL FINISH	GROUNDING INDENTS	A	PART NO

DO NOT SCALE PRINT. UNLESS SPECIFIED DIMENSIONS IN INCHES TOLERANCES ON : 2 PLC DEC ± - 3 PLC DEC ± .005 ANGLES ± 2°	DR 7-19-85 S.WELDON	AMP Incorporated Harrisburg, PA 17105-3608
	CHK 7-29-85 J.GERACE	
MATERIAL	APPD 7-29-85 L.BREKOSKY	NAME
MOLDED PARTS: △3 SHELLS: △4	APPD 7-31-85 V.KUMAR	PLUG CONNECTOR, SIZE 3, 25 POSITION, AMPLIMITE™ HDP
FINISH	PRODUCT SPEC	SIZE
SHELLS: SEE TABLE	APPLICATION SPEC	CAGE CODE
		DRAWING NO
		SCALE
	WEIGHT	NTS
		SHEET
		1 OF 1

THIS DRAWING IS A CONTROLLED DOCUMENT FOR AMP INCORPORATED. IT IS SUBJECT TO CHANGE AND THE CONTROLLING ENGINEERING ORGANIZATION SHOULD BE CONTACTED FOR THE LATEST REVISION.